

# Build Your Own Clone Crown Jewel Dry Blend Board Instructions



## **Parts list for the Crown Jewel Dry Blend Board**

### **Resistors:**

- 7 - 22k/223 (Red/Red/Black/Red/Brown)**
- 1 - 56k/563 (Green/Blue/Black/Red/Brown)**
- 1 - 330k/334 (Orange/Orange/Black/Orange/Brown)**

### **Capacitors:**

- 1 - 100pf ceramic disc (May say "101" on the body)**
- 2 - 4.7uf electrolytic capacitors**
- 2 - 10uf electrolytic capacitors**

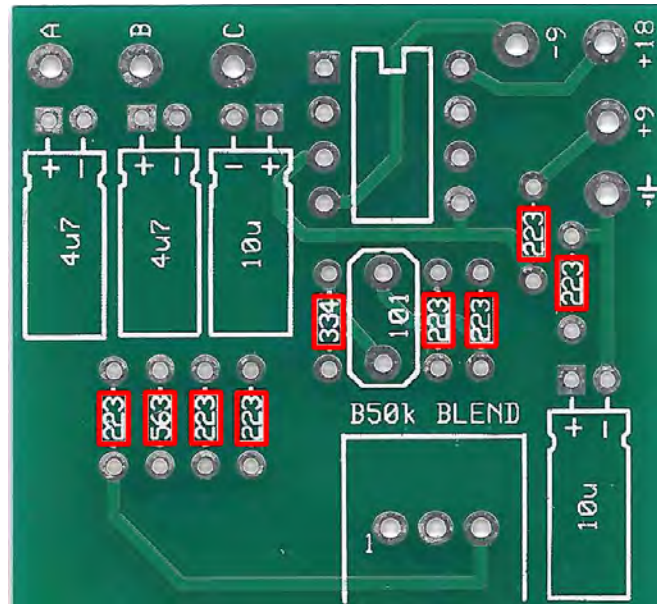
### **ICs:**

- 1 - Dual Opamp (TL072, 4558, etc.)**
- 1 - DIP8 IC Socket**

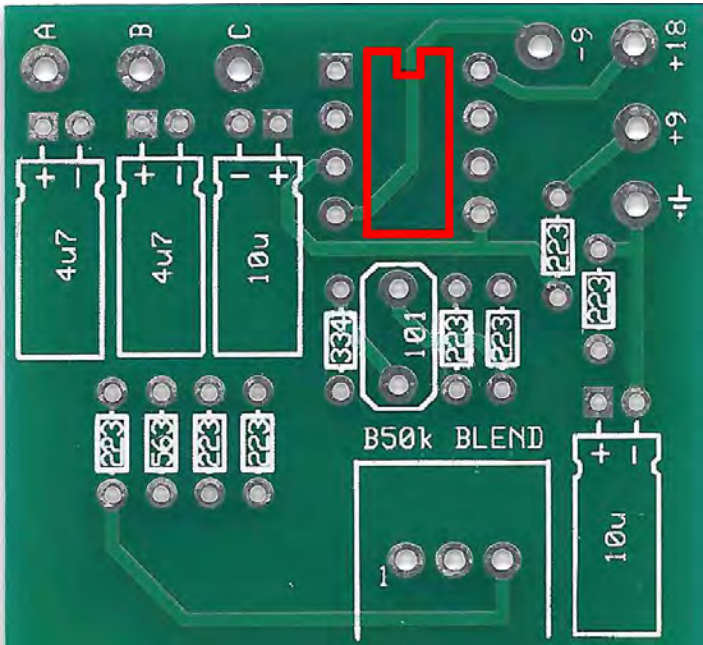
### **Pots:**

- 1 - B50k**

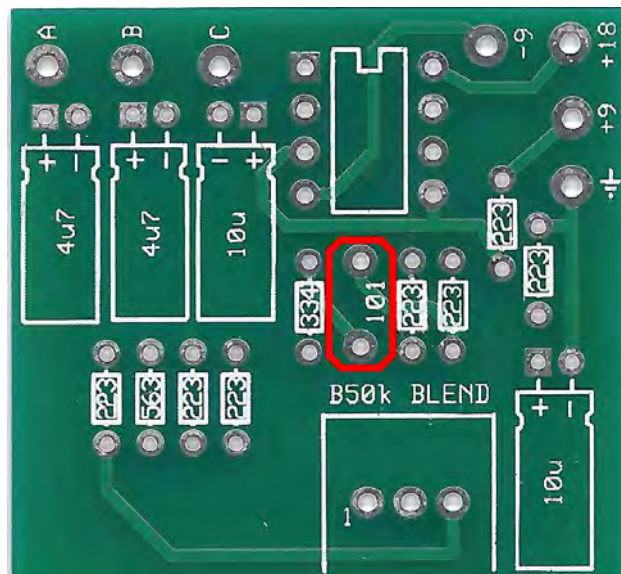
**Step 1:** Add the resistors. These are not polarized and can go in either direction.



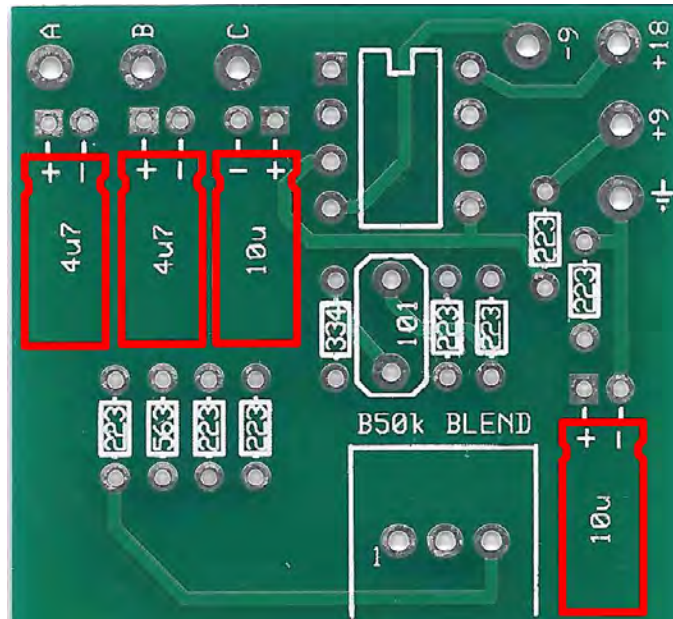
**Step 2:** Add IC socket. Be sure to match the notch on the board screenprint with the notch on the IC socket



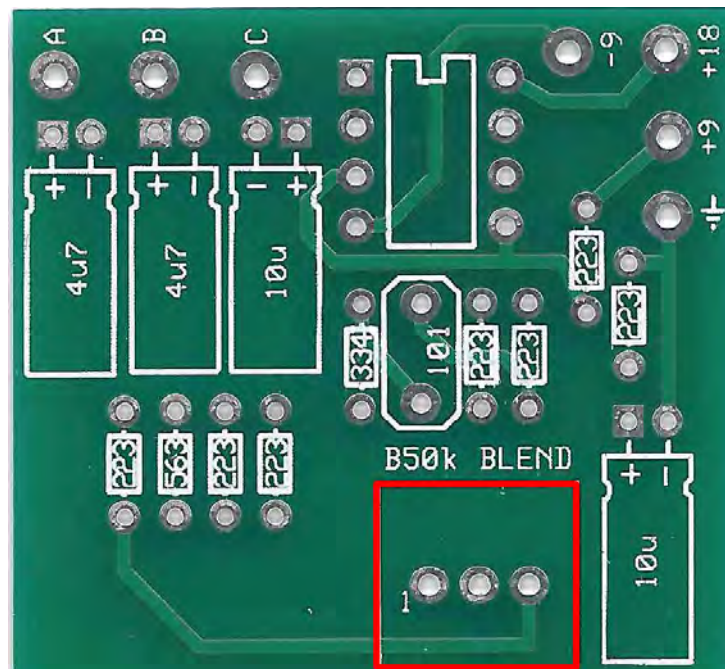
**Step 3:** Add the ceramic disc cap. This is not polarized and can be placed in either direction.



**Step 4:** Add the electrolytic capacitors. These are polarized. Be sure to insert the long leg into the square hole. Before soldering, bend the capacitors so they are laying flat along the PCB screenprint.



**Step 5:** Cut off the tab on the potentiometer and add it to the board. You will install it so the shaft is facing away from the board.







**Blend Pot Installed**

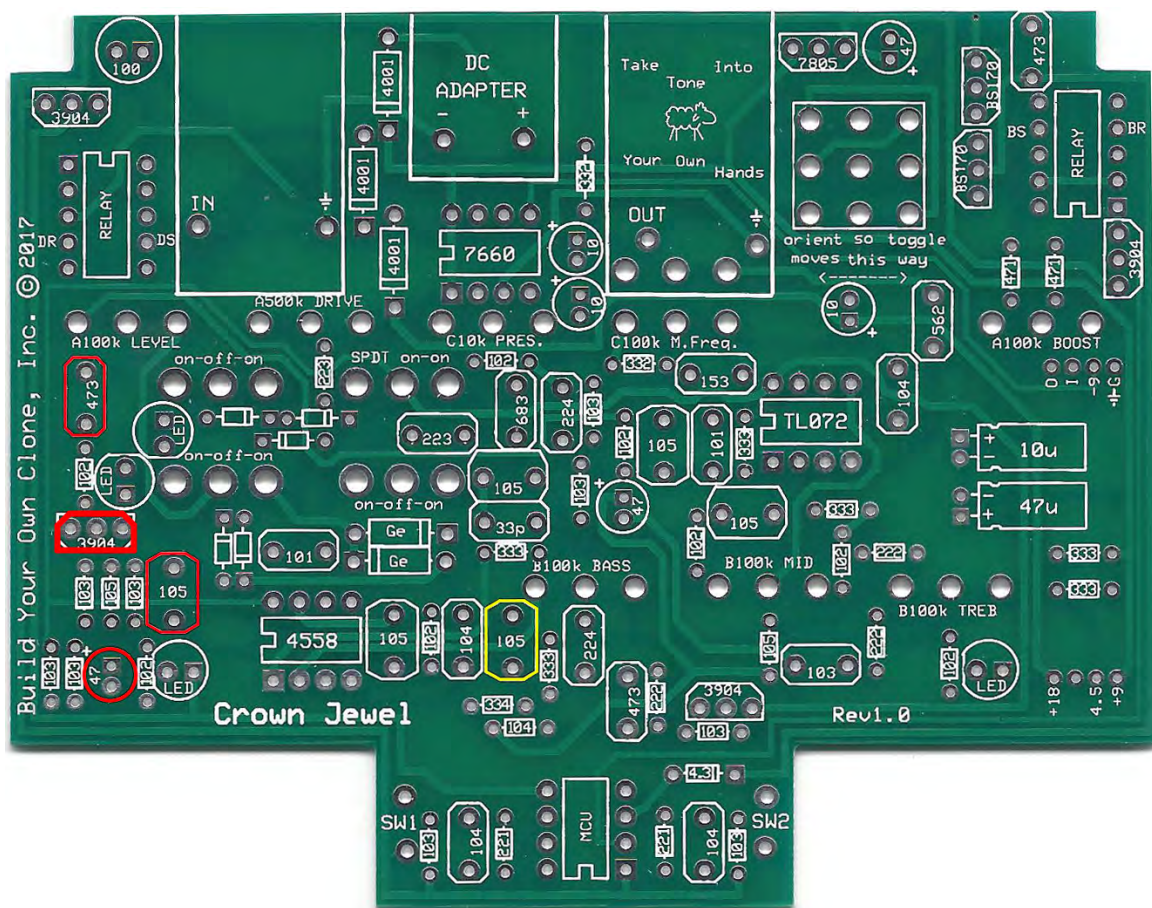


## Preparing the Crown Jewel Mainboard

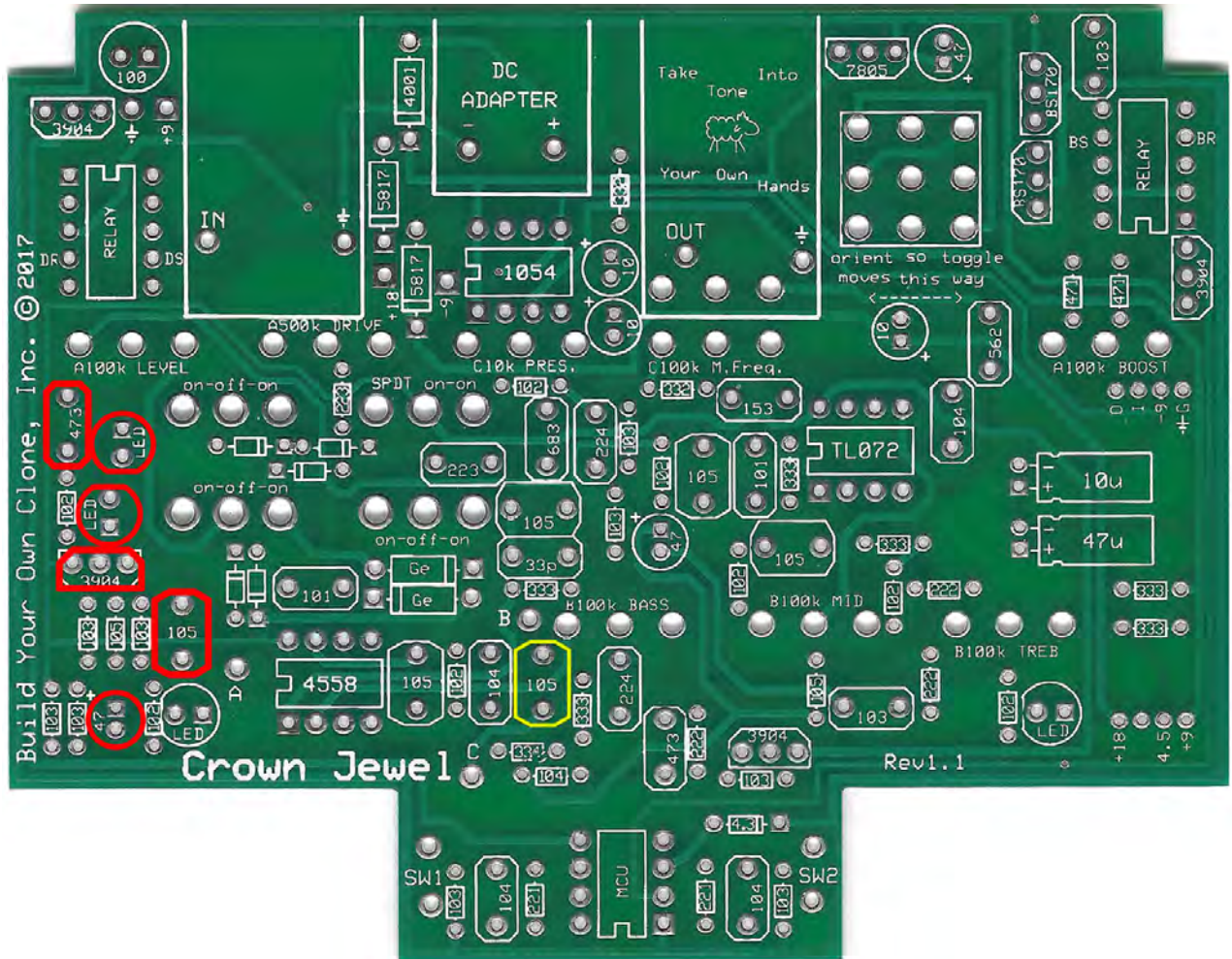
Regardless of the Rev. number on your board, you will have to do some “prep work” before you can install your blend board.

**REV 1.0:** Move the components highlighted in red to the bottom of the board.

**Remember to flip the 3904 so it is oriented backwards from the screenprint.** Completely remove the 1uF (105) capacitor highlighted in yellow.



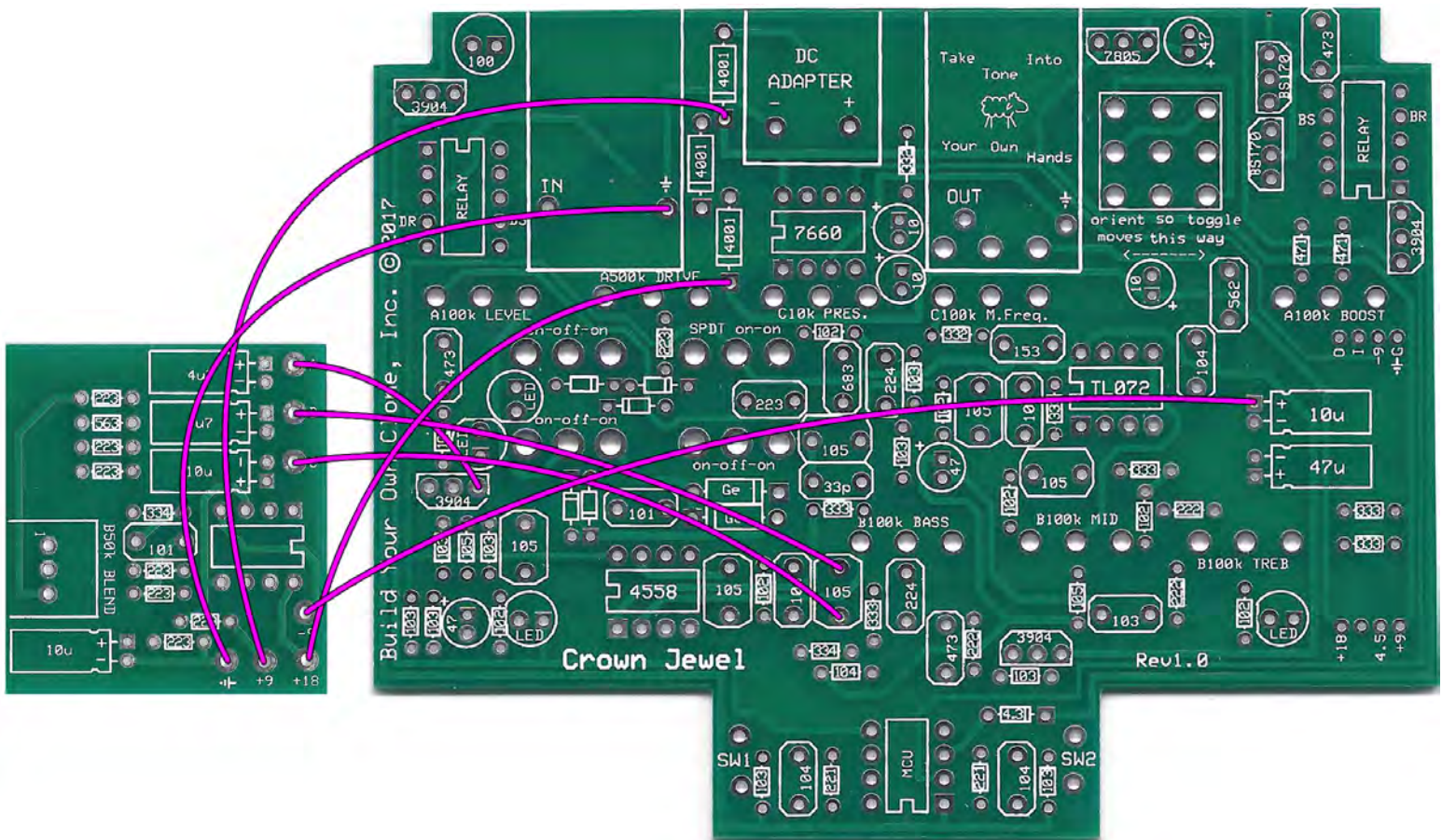
**Rev 1.1:** You should have already installed the components highlighted in red to the bottom of the board. Also completely remove the 1uf (105) capacitor.





# Wiring

Rev. 1.0: You will ultimately install the blend board so that it is upside down, that is to say, the solder side will be facing the back of the enclosure. You can wire the blend board as shown in the picture, or install the blend board first, then wire.



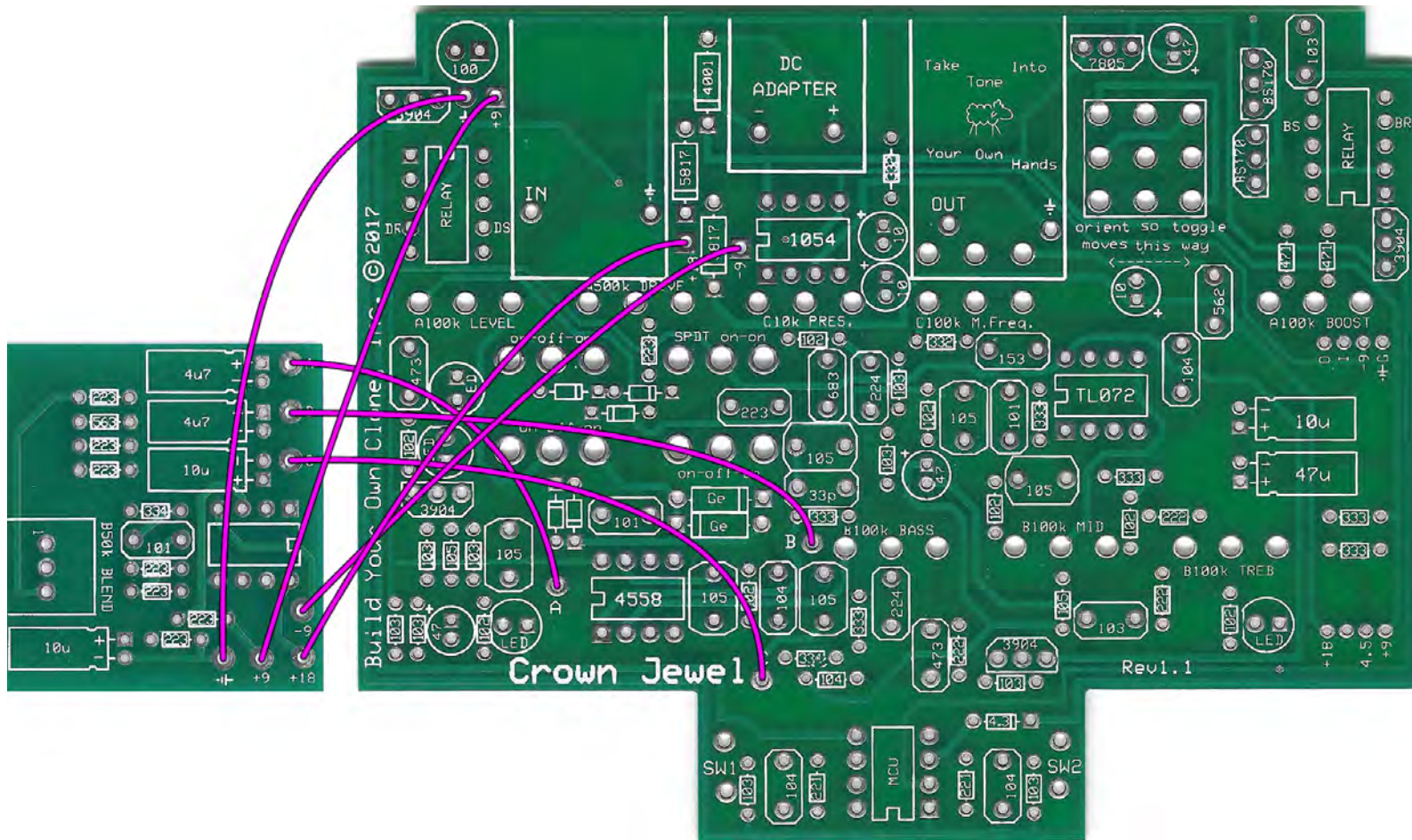
**Note: the A, B, and C eyelets have specific spots on the mainboard, but the -9, +9, +18, and Ground eyelets can be placed in any relevant location on the mainboard. If you aren't sure where those spots are, use the recommended locations as shown above.**



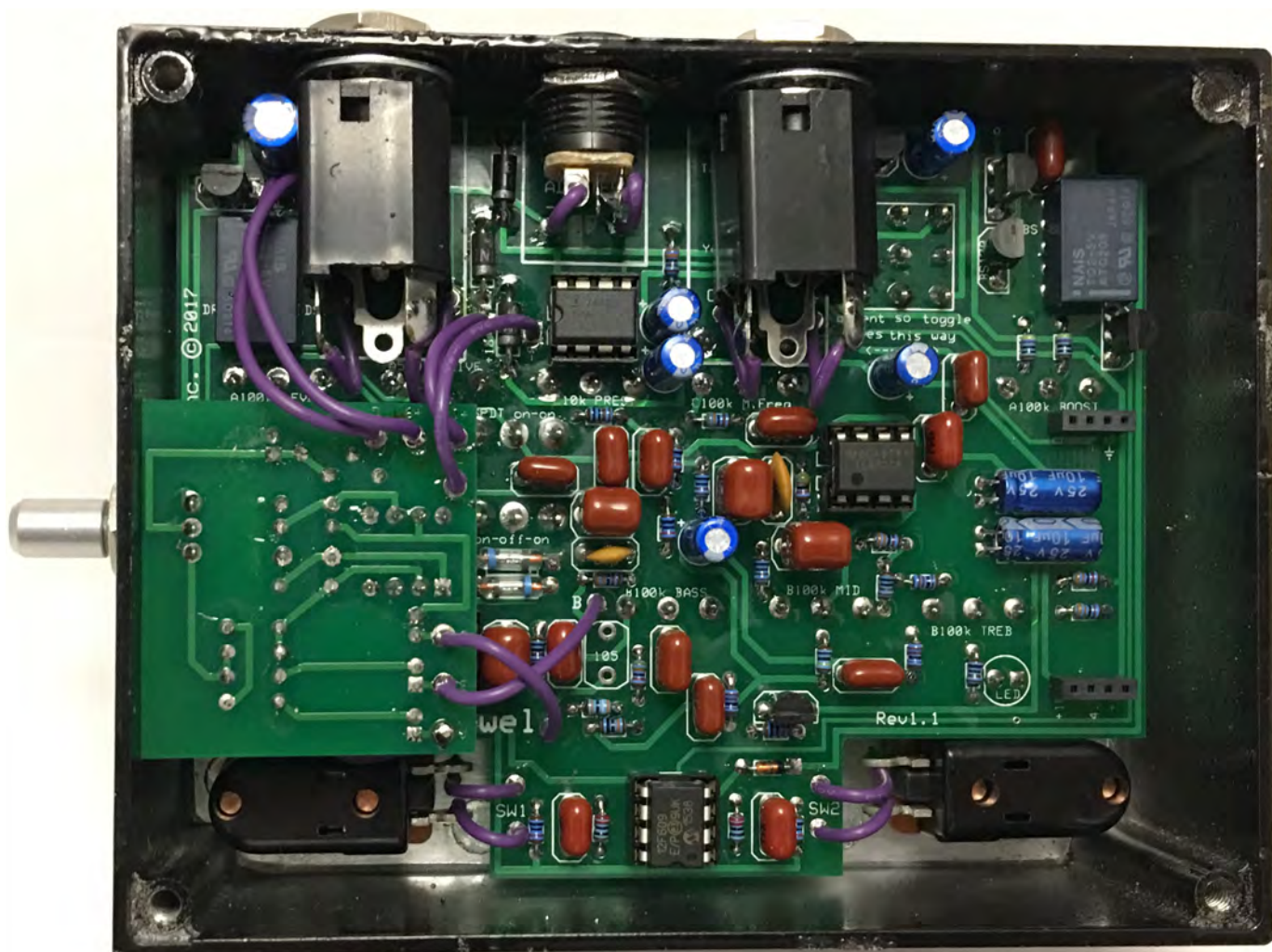
**Rev. 1.0 Finished**



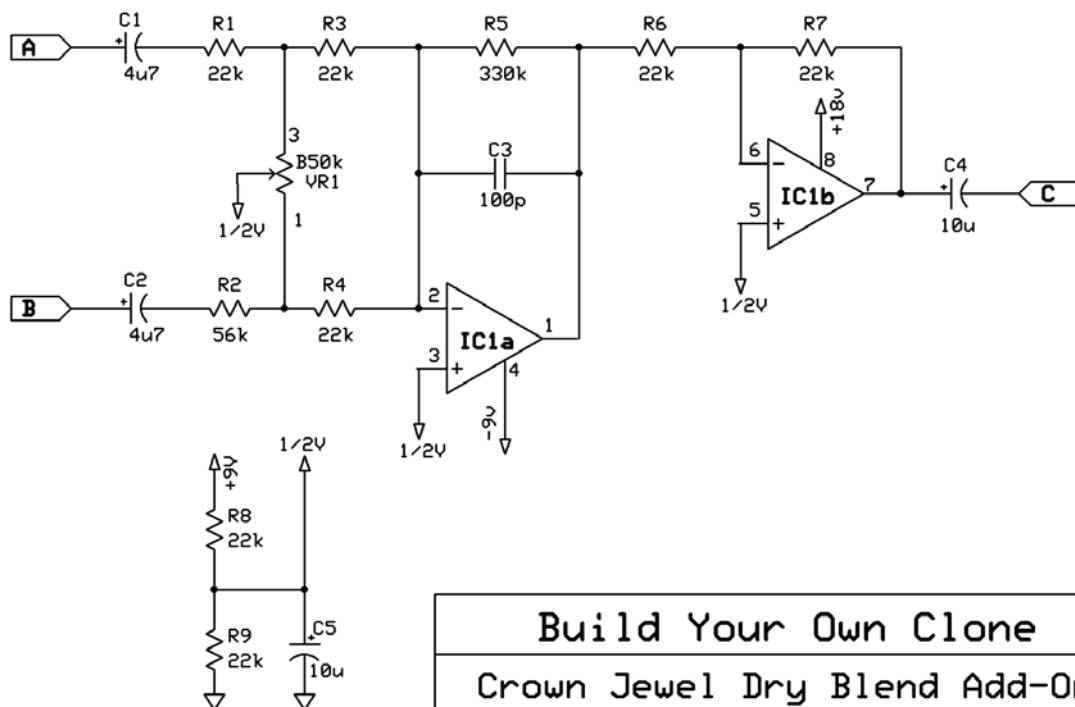
Rev 1.1: You will ultimately install the blend board so that it is upside down, that is to say, the solder side will be facing the back of the enclosure. You can wire the blend board as shown in the picture, or install the blend board first, then wire.



**Note: On the Rev. 1.1 boards, the Blend Board and Crown Jewel Board both have specific eyelets. Match those up on both.**



**Rev. 1.1 Finished**



Build Your Own Clone		
Crown Jewel Dry Blend Add-On		
Designed by:	Rev 1.0	Page 2 of 2 TEV=LOML
K. Vonderhulls	7/6/2017	