

# **Build Your Own Clone E.S.V. Fuzz (Silicon) NPN Negative Ground Kit Instructions**



## **Warranty:**

BYOC, Inc. guarantees that your kit will be complete and that all parts and components will arrive as described, functioning and free of defect. Soldering, clipping, cutting, stripping, or using any of the components in any way voids this guarantee. BYOC, INC guarantees that the instructions for your kit will be free of any major errors that would cause you to permanently damage any components in your kit, but does not guarantee that the instructions will be free of typos or minor errors. BYOC, INC does not warranty the completed pedal as a whole functioning unit, nor do we warranty any of the individual parts once they have been used. If you have a component that is used, but feel it was defective prior to you using it, we reserve the right to determine whether or not the component was faulty upon arrival. Please direct all warranty issues to: [sales@buildyourownclone.com](mailto:sales@buildyourownclone.com) This would include any missing parts issues.

## **Return:**

BYOC, Inc. accepts returns and exchanges on all products for any reason, as long as they are unused. We do not accept partial kit returns. Returns and exchanges are for the full purchase price less the cost of shipping and/or any promotional pricing. Return shipping

is the customer's responsibility. This responsibility not only includes the cost of shipping, but accountability of deliver as well. Please contact [sales@buildyourownclone.com](mailto:sales@buildyourownclone.com) to receive a return authorization before mailing.

## **Tech Support:**

BYOC, Inc. makes no promises or guarantees that you will successfully complete your kit in a satisfactory manor. Nor does BYOC, Inc. promise or guarantee that you will receive any technical support. Purchasing a product from BYOC, Inc. does not entitle you to any amount of technical support. BYOC, Inc. does not promise or guarantee that any technical support you may receive will be able to resolve any or all issues you may be experiencing.

That being said, we will do our best to help you as much as we can. Our philosophy at BYOC is that we will help you only as much as you are willing to help yourself. We have a wonderful and friendly DIY discussion forum with an entire section devoted to the technical support and modifications of BYOC kits.

[www.buildyourownclone.com/board](http://www.buildyourownclone.com/board)

When posting a tech support thread on the BYOC forum, please post it in the correct lounge, and please title your thread appropriately. If everyone titles their threads "HELP!" then it makes it impossible for the people who are helping you to keep track of your progress. A very brief description of your specific problem will do. It will also make it easier to see if someone else is having or has had the same problem as you. The question you are about to ask may already be answered. Here is a list of things that you should include in the body of your tech support thread:

1. A detailed explanation of what the problem is. (more than, "It doesn't work, help")
2. Pic of the topside of your PCB.
3. Pic of the underside of your PCB.
4. Pic that clearly shows your footswitch/jack wiring and the wires going to the PCB
5. A pic that clearly shows your wiring going from the PCB to the pots and any other switches(only if your kit has non-PC mounted pots and switches)
6. Is bypass working?
7. Does the LED come on?
8. If you answered yes to 6 and 7, what does the pedal do when it is in the "on" position?
9. Battery or adapter (if battery, is it good? If adapter, what type?)

Also, please only post photos that are in focus.

## **Revision Notes:**

E.S.V. Fuzz Rev 3.0 No known errors.

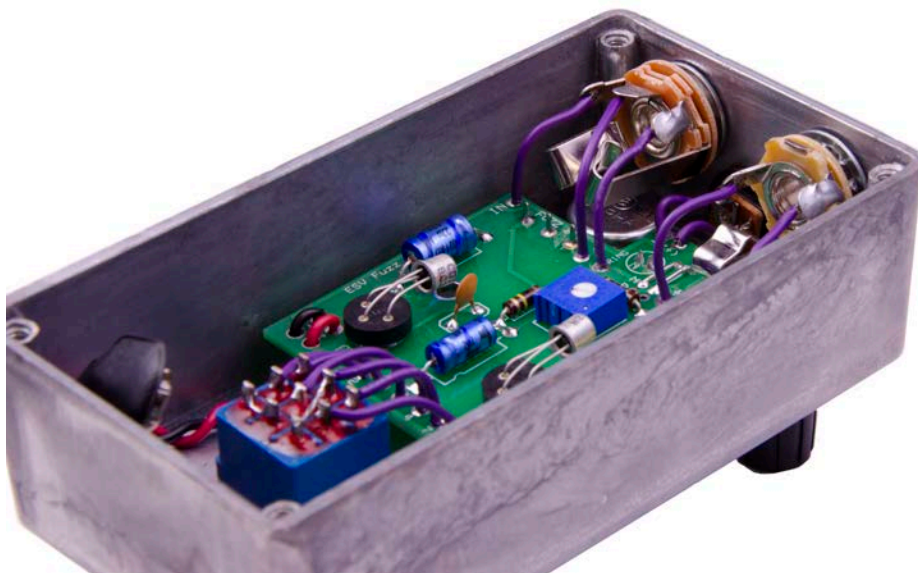
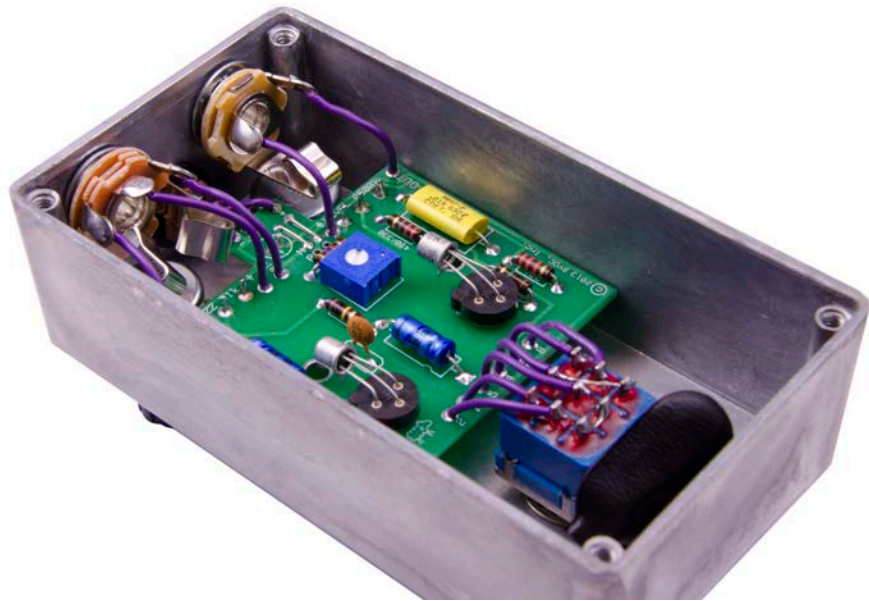
## **Copyrights:**

All material in this document is copyrighted 2013 by BYOC, Inc.

# **E.S.V. Fuzz (NPN) Kit Instruction Index**

<b>Parts Checklist.....</b>	<b>page 6</b>
<b>Populating the Circuit Board.....</b>	<b>page 7</b>
<b>Main PCB Assembly.....</b>	<b>page 16</b>
<b>Wiring.....</b>	<b>page 21</b>
<b>Orienting the Transistors/Finish up.....</b>	<b>page 27</b>
<b>Operation Overview.....</b>	<b>page 28</b>
<b>Schematic.....</b>	<b>page 29</b>





## Parts Checklist for ESV Fuzz NPN Silicon Kit

### Resistors:

- 1 - 330ohm (orange/orange/brown/gold)
- 1 - 4.7k (yellow/purple/red/gold)
- 1 - 33k (orange/orange/orange/gold)
- 1 - 100k (brown/black/yellow/gold)
- 1 - 1M (brown/black/green/gold)

### Trimpot:

- 1 - 25k trimmer

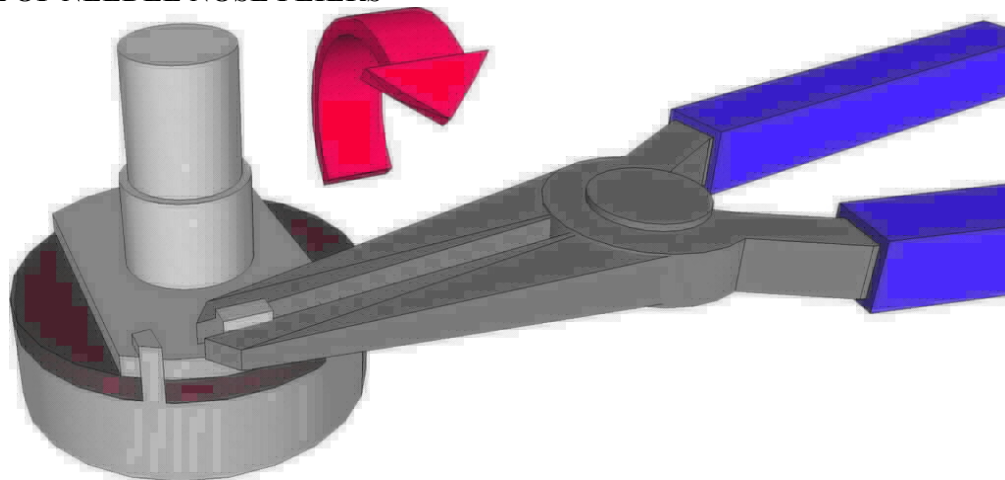
### Capacitors:

- 1 - 0.01uf film
- 1 - 2.2uf aluminum electrolytic
- 1 - 22uf aluminum electrolytic
- 1 - 150pf ceramic disc

### Transistors:

- 2 - BC108 or BC109C NPN Silicon Transistors
- 2 - Transistor sockets

**Potentiometers: SNAP THE SMALL TABS ON THE TOP OF THE POTS OFF WITH A PAIR OF NEEDLE NOSE PLIERS**



- 1 - A500K Audio Volume pot
- 1 - B1K Linear Fuzz pot

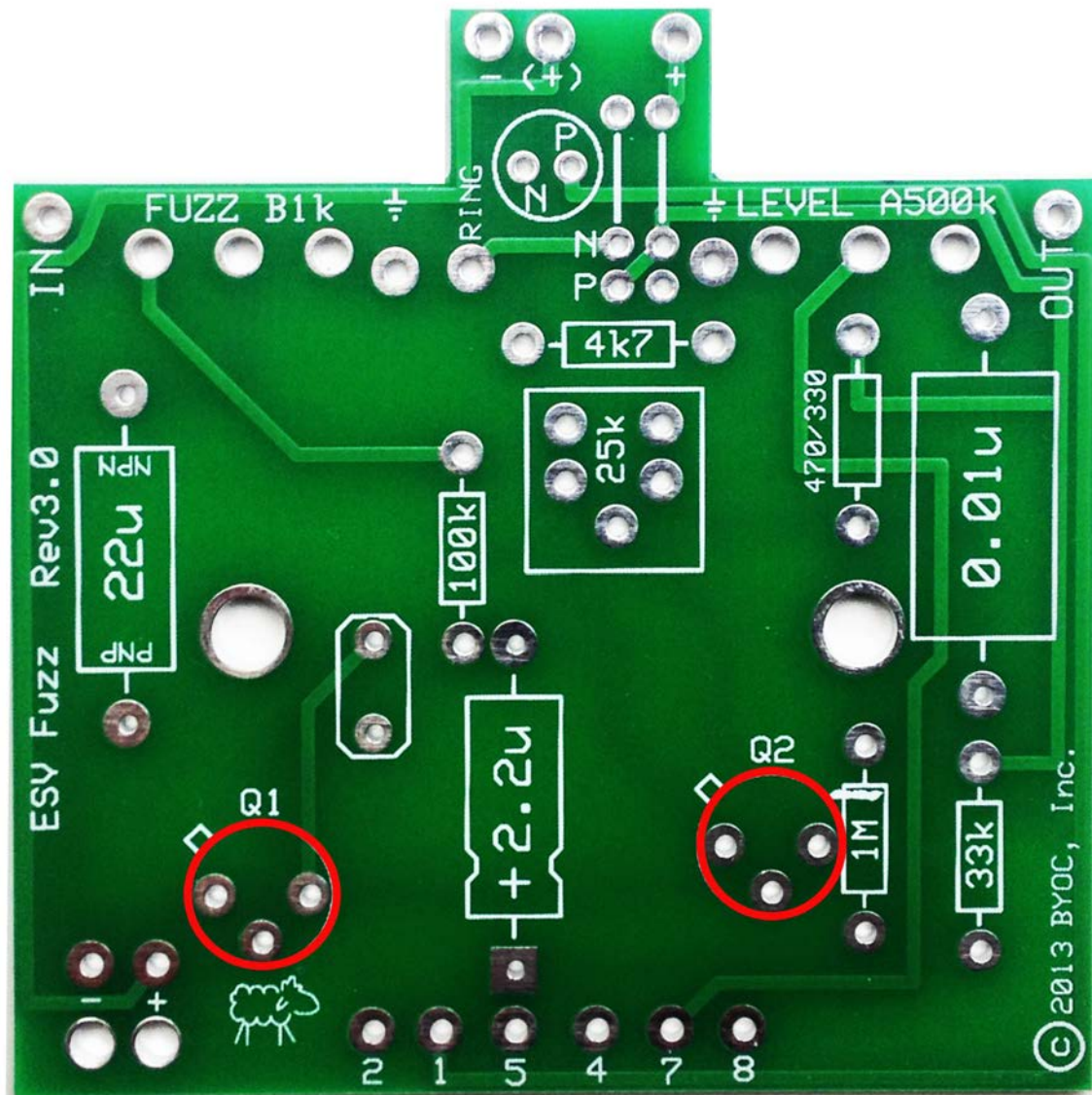
### Hardware:

- 1 - predrilled enclosure w/ 4 screws
- 1 - E.S.V. Fuzz circuit board
- 1 - 3pdt footswitch
- 2 - knobs
- 1 - AC adaptor jack
- 1 - 1/4" stereo jack
- 1 - 1/4" mono jack
- 1 - battery snap
- 1 - red LED
- hook-up wire



# Populating the Circuit Board

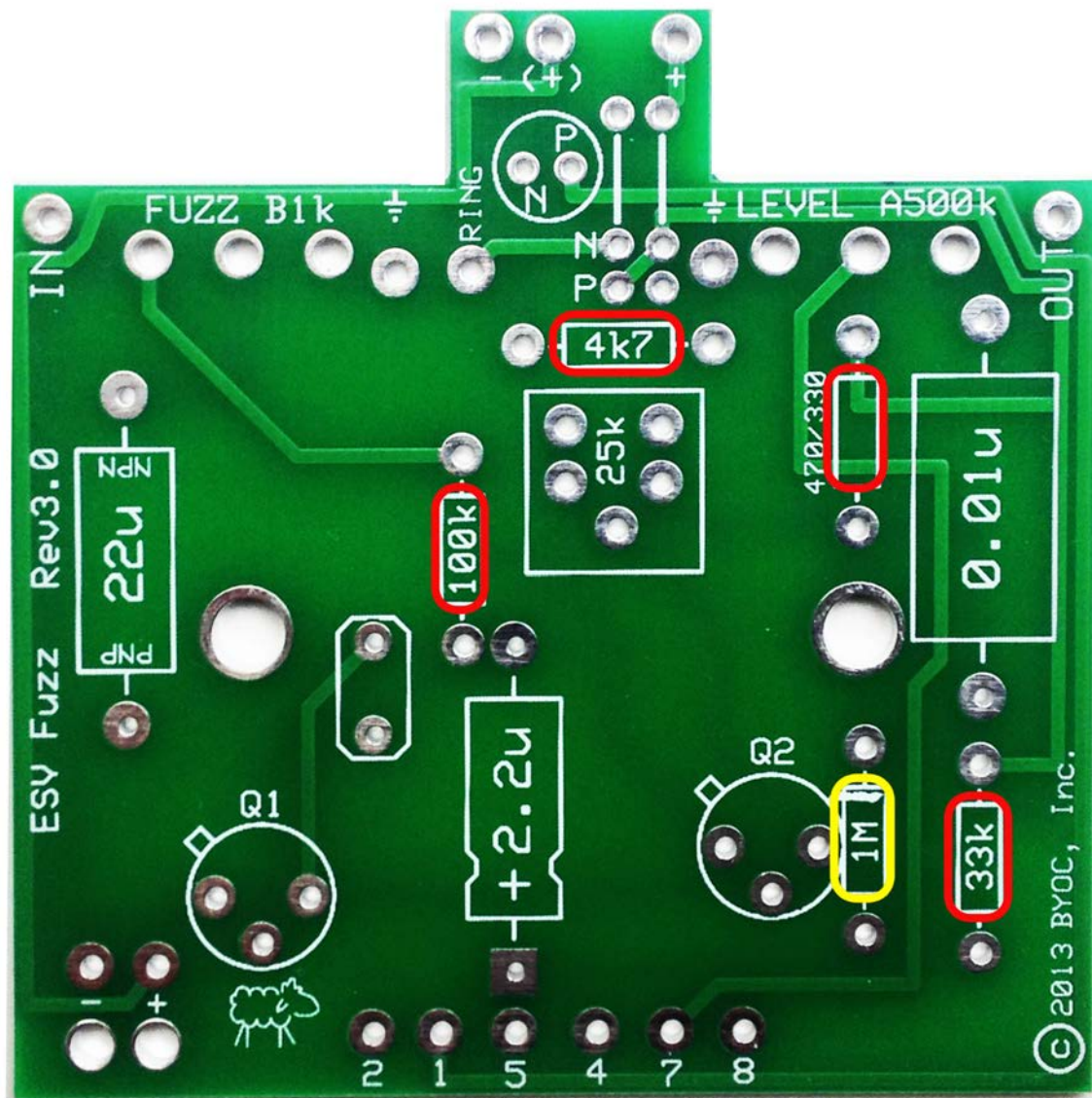
**Step 1:** Add the transistor sockets. Make sure that the tab on the socket matches up with the tab on the circuit board. **Do not add the transistors yet and do not solder the transistors to anything.** Only solder the sockets.



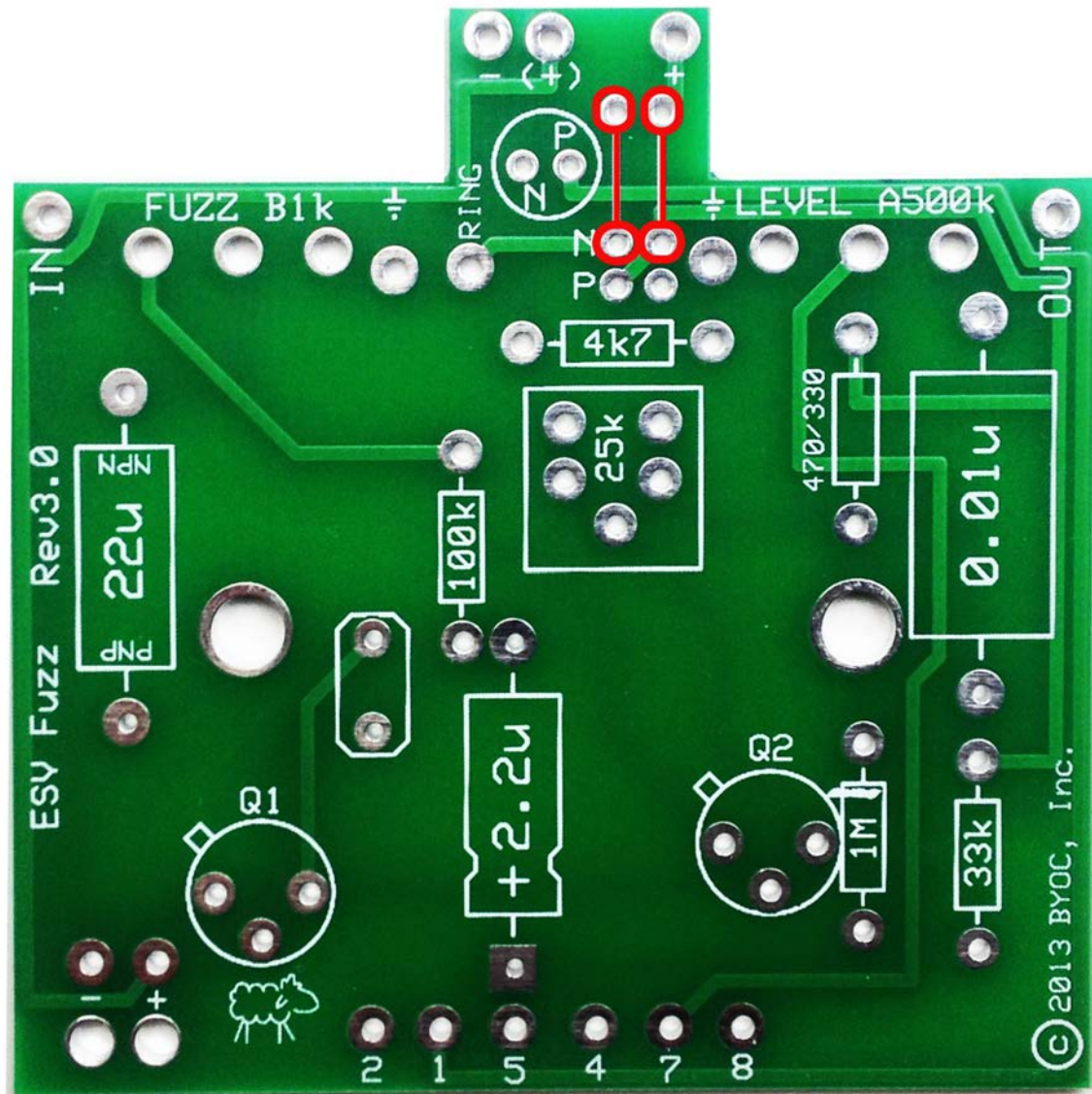
**Step 2:** Add all the resistors. Resistors are not polarized and can be inserted in either direction. Save the excess lead clippings from these resistors. You will need them to make jumpers in the next step.

Use the 330 ohm resistor for silicon transistors. You would only want to use 470 ohm for germanium transistors.

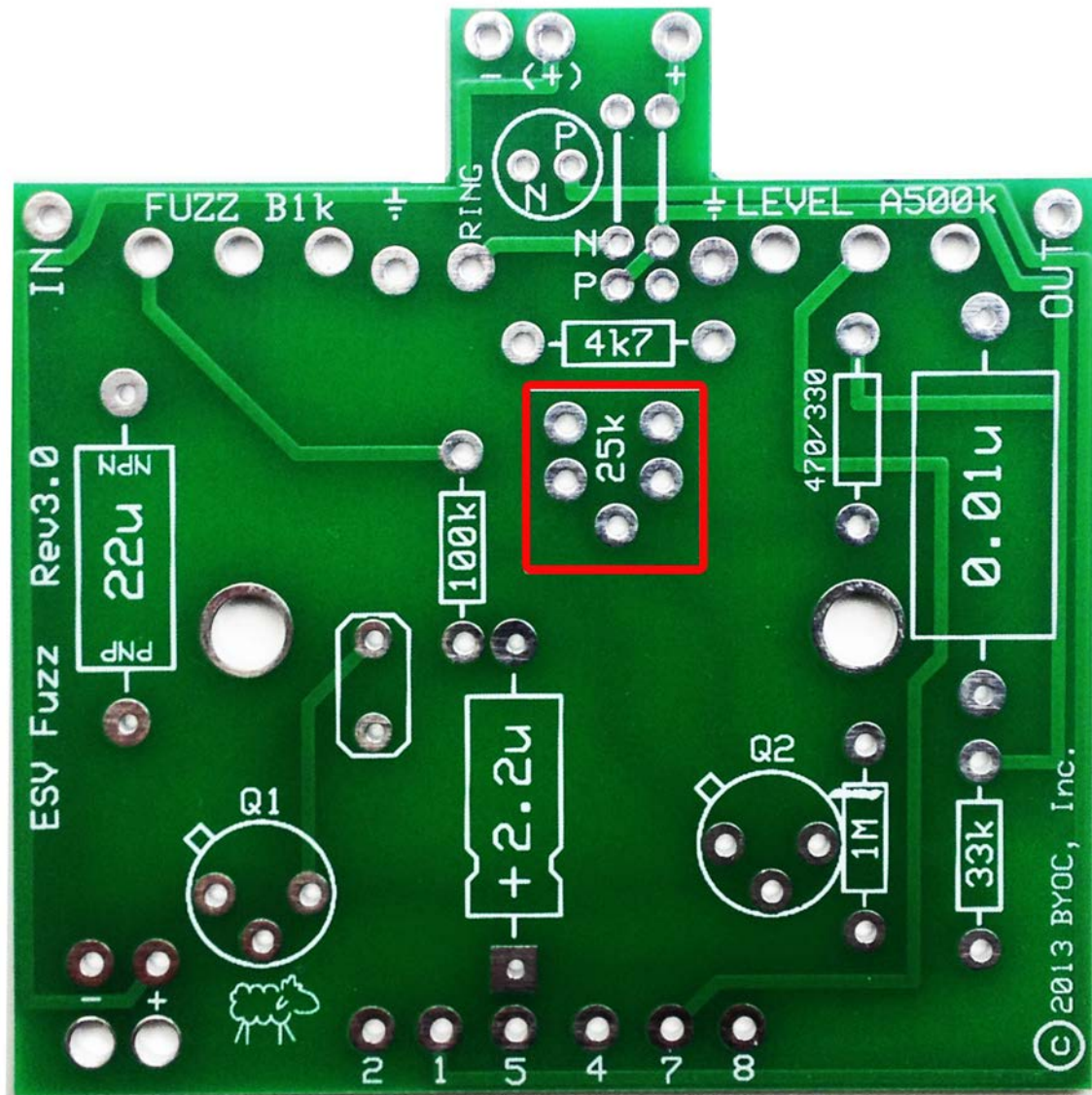
**1M WILL NEED TO BE SLIGHTLY BENT TO THE RIGHT TO FIT NEXT TO THE Q2 SOCKET**





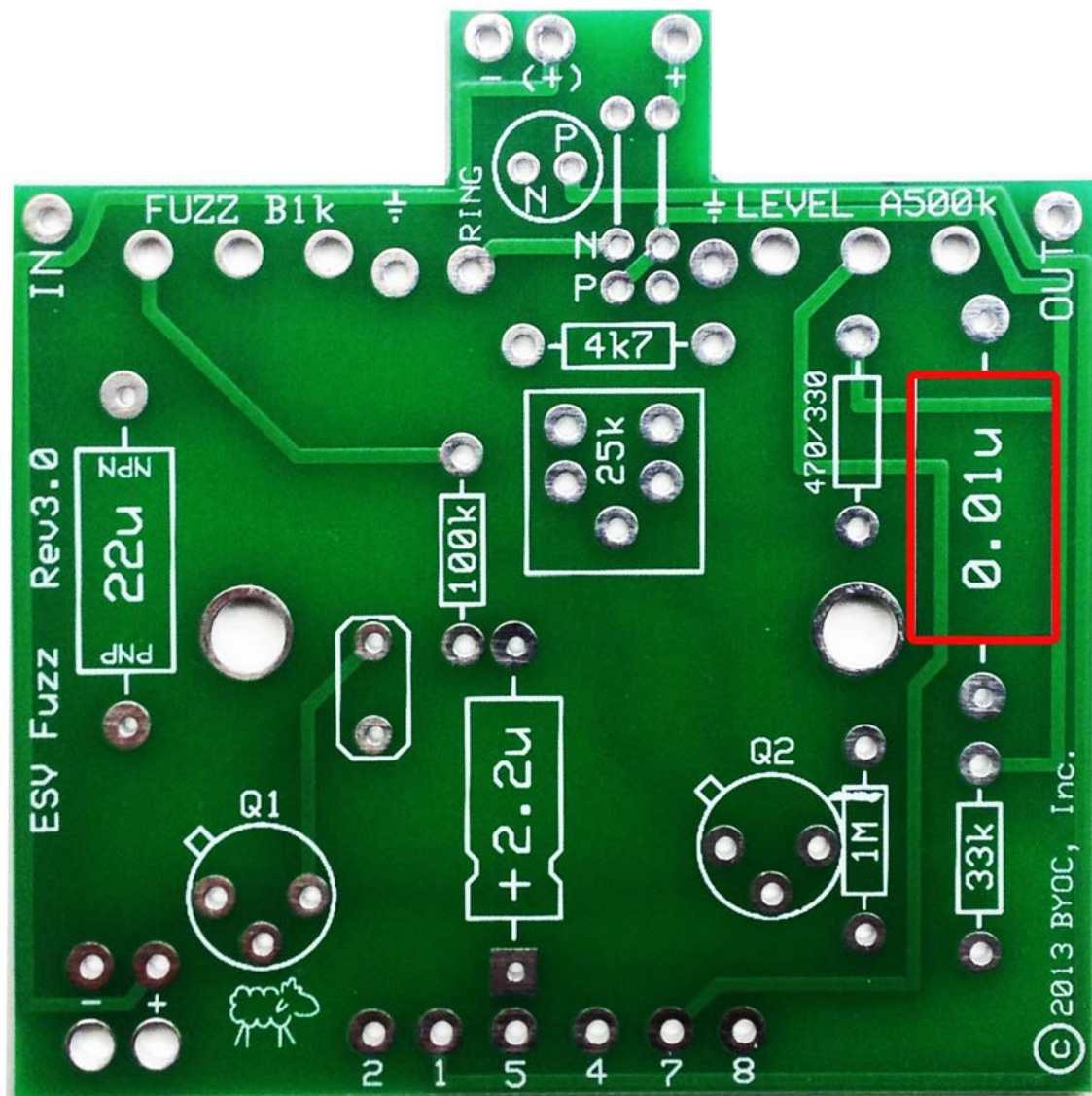


**Step 4:** Add the bias trimpot. The board is designed to accept several brands of trimmers, but there is only one way to insert the trimpot that comes with the kit. Directions for setting the trimpot are in the “Finish Up” portion of the directions.

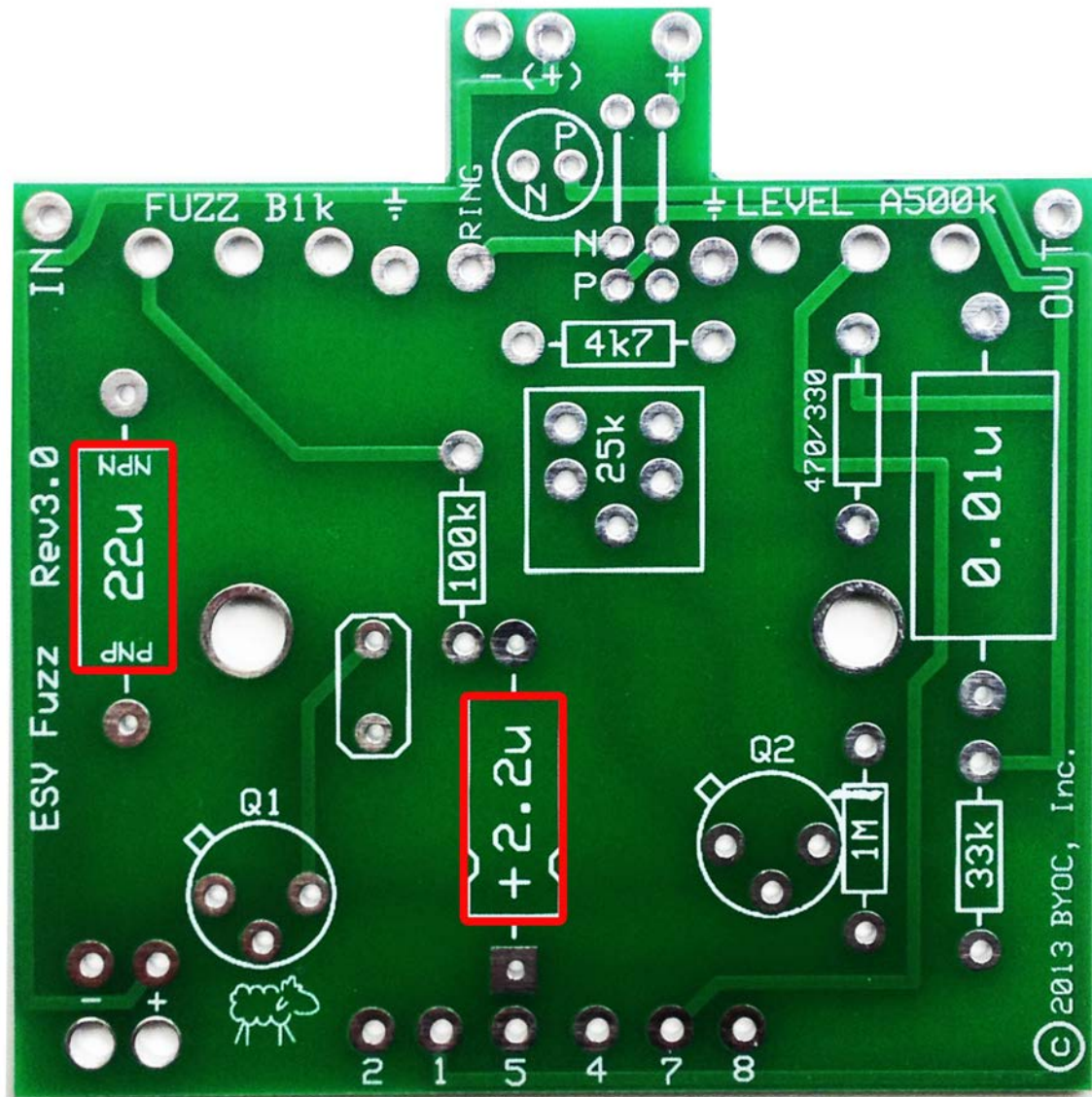




**Step 5:** Add the 0.01uf film capacitor. This is non-polarized so it can go in either direction.

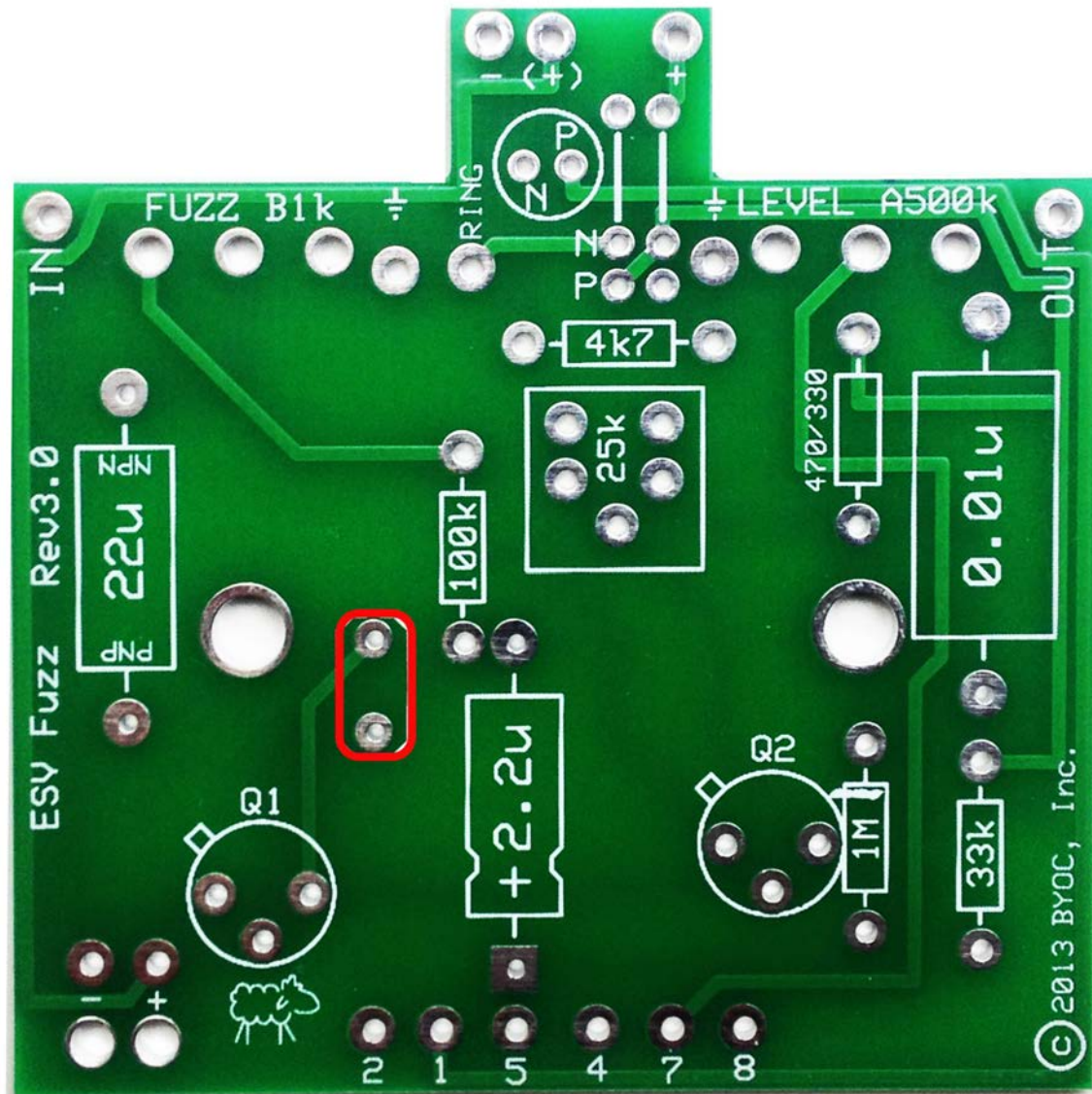


**Step 6:** Add the aluminum electrolytic capacitors. These are polarized, meaning there is a positive and negative end. You will be able to identify the positive end by the indented collar around that side. For the 2.2uF cap, the positive end goes in the square solder pad. It should be obvious from the layout how to orient the 2.2uF. The 22uF depends on whether you are building for NPN or PNP. Here we are building for NPN, so **the positive end of the 22uF cap goes in the side that says “NPN”**.

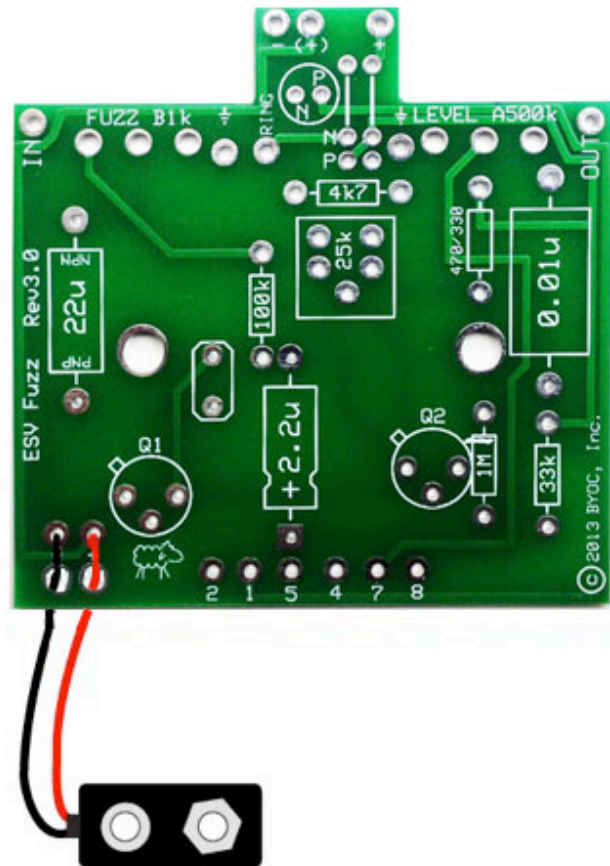




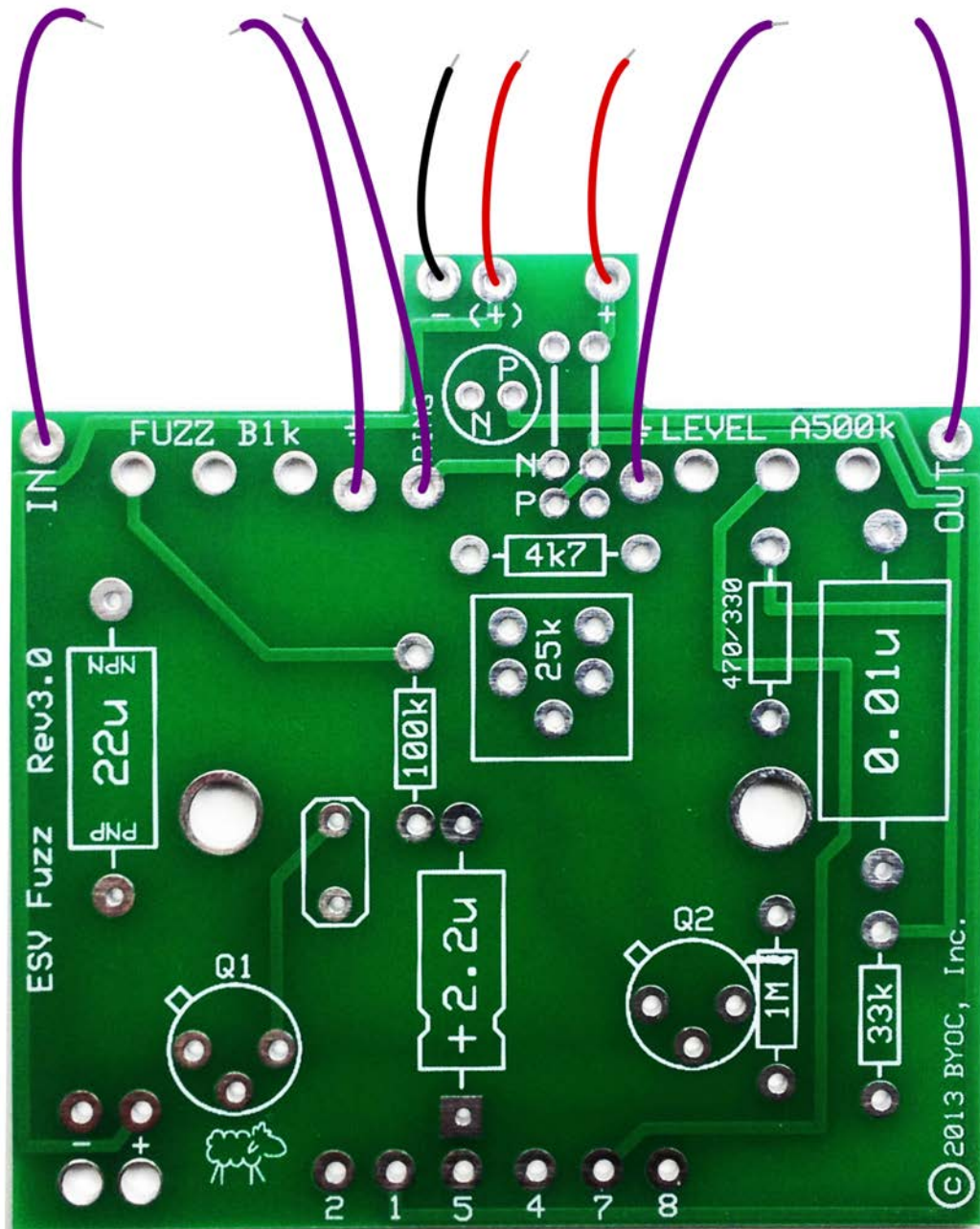
**Step 7:** Add the 150pf ceramic disk capacitor if you'd like. This is not labeled on the PCB. This component was not part of the original fuzz face circuit. It prevents the higher gain silicon transistors from feeding back when you have the fuzz knob all the way up. We highly recommend that you add this capacitor.



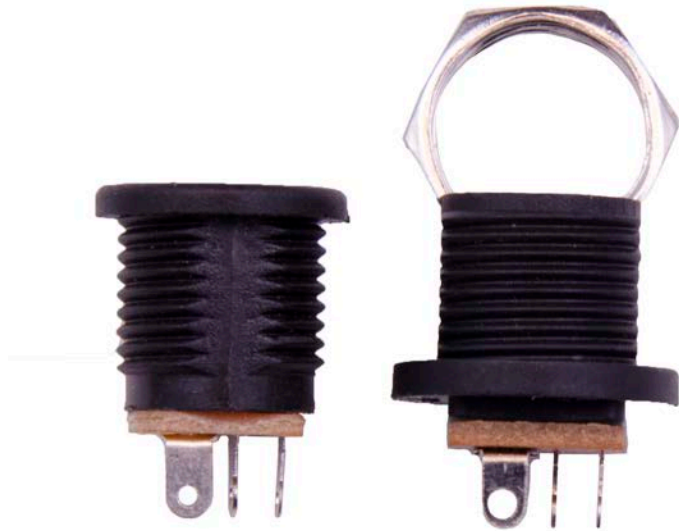
**Step 8:** Add the battery snap. Thread the solder ends of the battery snap into the strain relief holes from the bottom solder side of the PCB and out through the top. Insert the solder ends of the battery snap wires into the topside of their respective solder pads. Solder on the bottom side of the PCB. **Remember the red wire goes in the “+” hole and the black wire goes in the “-” hole.**



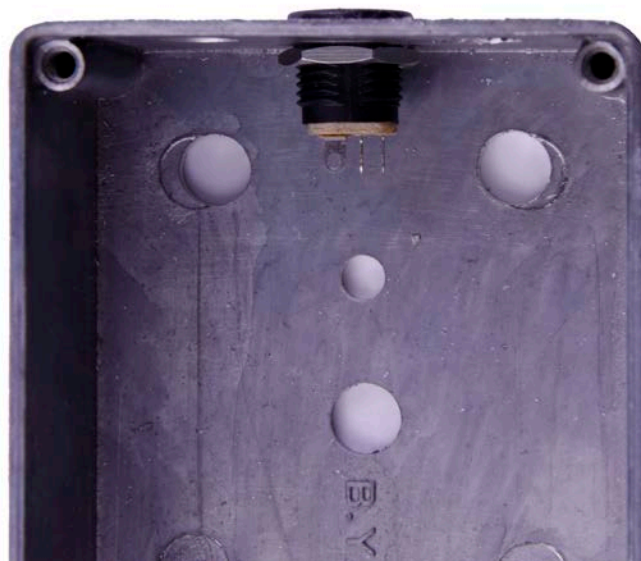
**Step 9:** Add wires to the IN, OUT, RING, two Ground eyelets, and DC adapter eyelets. Start by cutting five 2.5" pieces of wire, and three 1" pieces. Strip 1/4" off each end and tin the ends. Solder a 2.5" piece of wire to each of the IN, OUT, RING, and Ground eyelets on the PCB. Solder a 1" piece to each of wire to the DC adapter jack eyelets on the PCB. Load the wires in from the top and solder on the bottom of the PCB.



# Main PCB Assembly

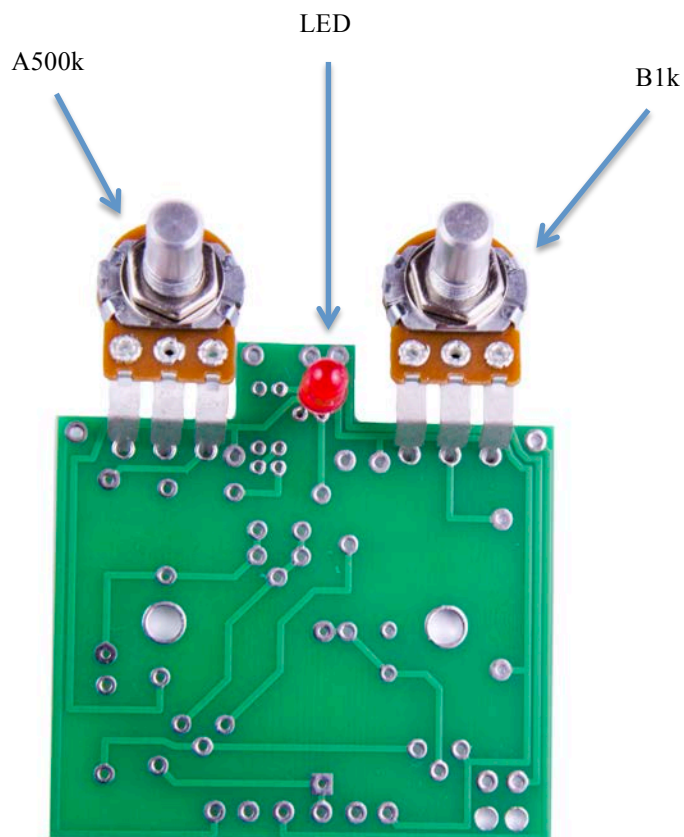


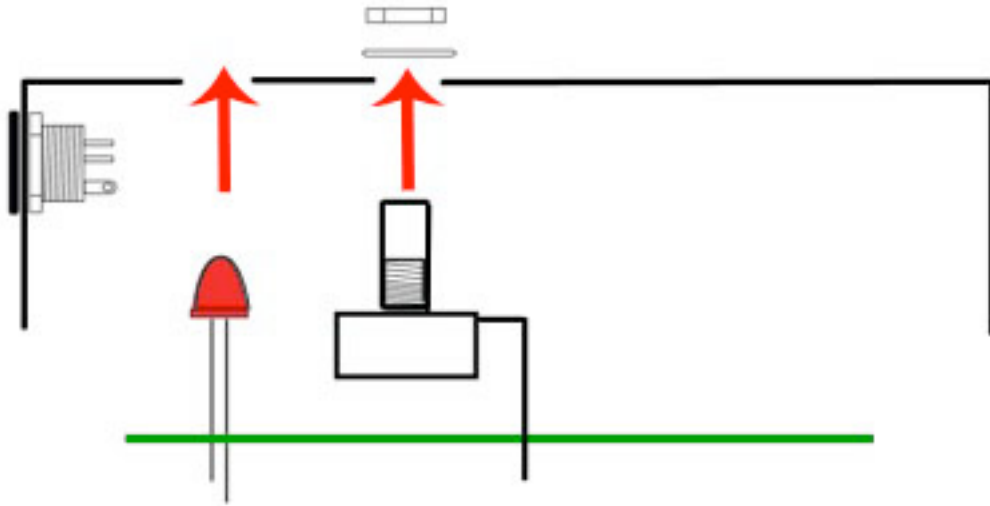
**Step 1:** Mount the AC adapter jack to the enclosure. Your kit may come with either an external thread or internal thread. Don't get confused by this. They still function exactly the same. You just thread the external nut on the outside and the internal nut on the inside. The picture below is of an internal nut jac





**Step 2:** Flip the PCB over so that the bottom or solder side is up. Insert the B1k (FUZZ) & A500k (VOLUME) potentiometers, and the LED into the bottom side of the PCB. **DO NOT SOLDER ANYTHING YET!!!** The LED will have one lead that is longer than the other. **MAKE SURE THE LONGER LEAD GOES IN THE HOLE MARKED “N” AND THE SHORTER LEAD IN THE HOLE MARKED “P”!!!!!!**

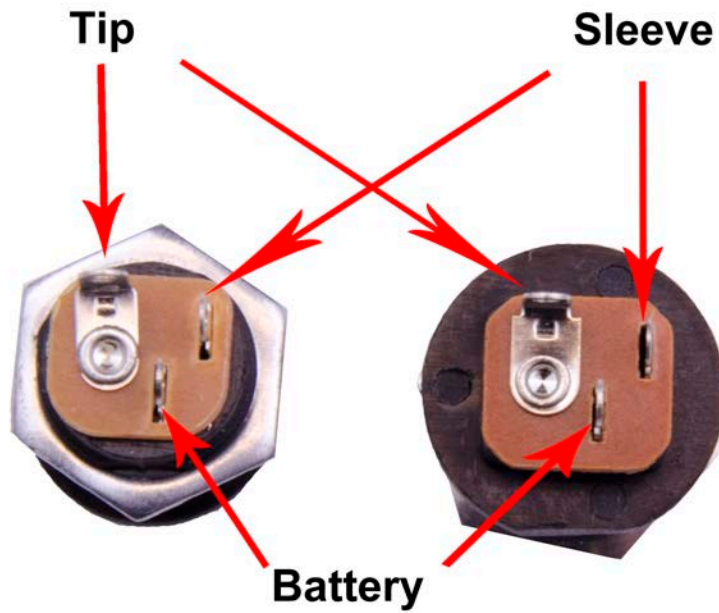




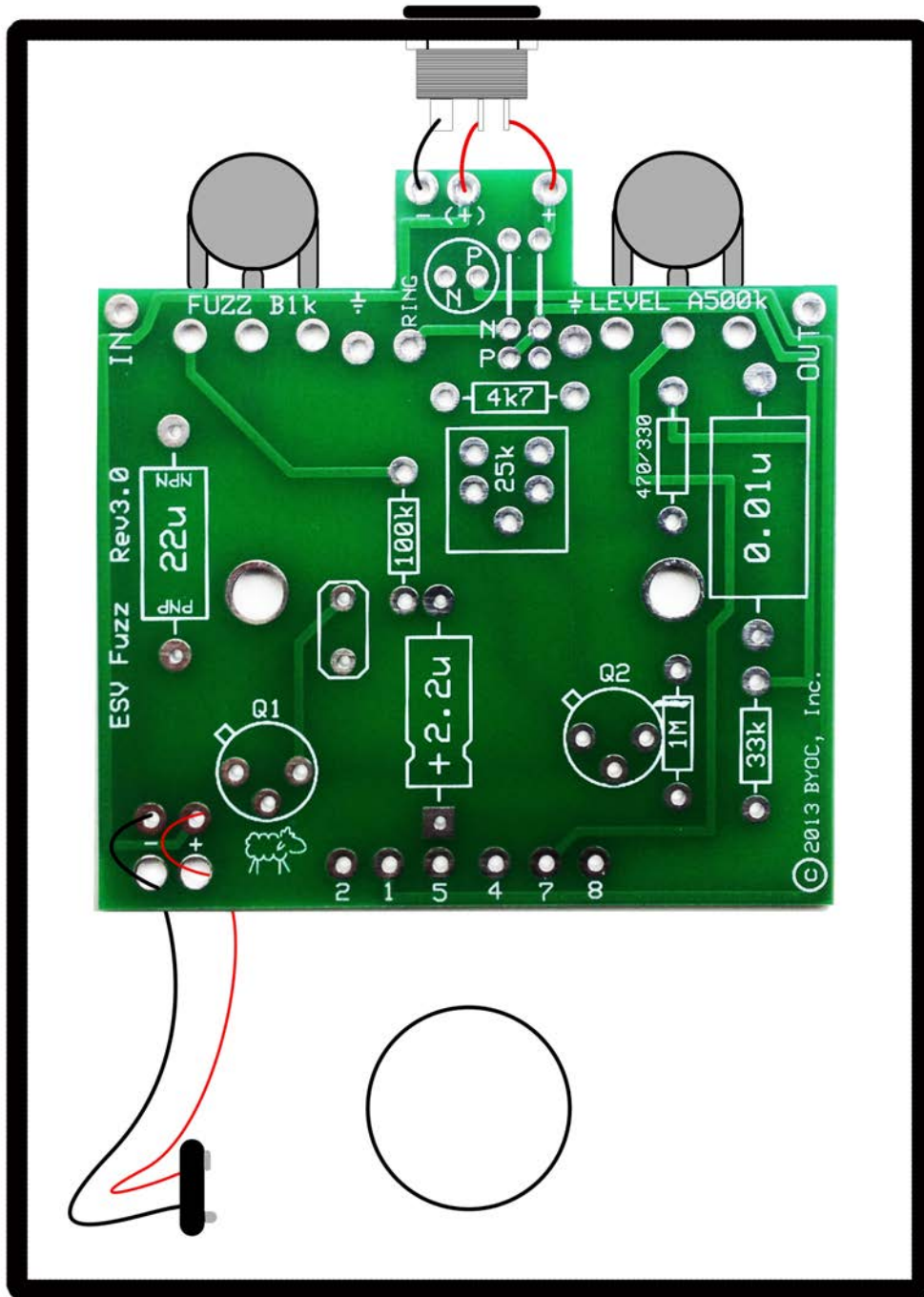
**Step 3:** Hold the PCB in one hand so that the component side of the PCB is in the palm of your hand and the bottom side with the pots, toggle switch and LED is facing up. Now use your other hand to guide the predrilled enclosure onto the PCB assembly so that the pots and LED all go into their respective holes. Once the PCB assembly is in place, secure it by screwing on the washers and nuts for the pots. Only tighten them with your fingers. **You do not want them very tight yet.**

**Step 4:** Turn the entire pedal over so that the component side of the PCB is facing up. Lift the PCB up off the pots about 2mm just to make sure that the back of the PCB does not short out against the pots. Make sure the PCB is level and symmetrically seated inside the enclosure.

**Step 5:** Solder the pots and LEDs. You will solder these parts on the component side of the PCB. After you have soldered them in place, be sure to tighten up their nuts.



**Step 6:** Connect the TIP (negative) terminal of the DC adaptor jack to the eyelet on the PCB labeled “-“. Connect the SLEEVE of the DC adaptor jack to the eyelet on the PCB labeled “+”. Connect the battery disconnect terminal of the DC adaptor jack to the eyelet on the PCB labeled “(+)”. See diagram on the next page.





# Wiring

## Stereo (input) Jack



## Mono (output) Jack

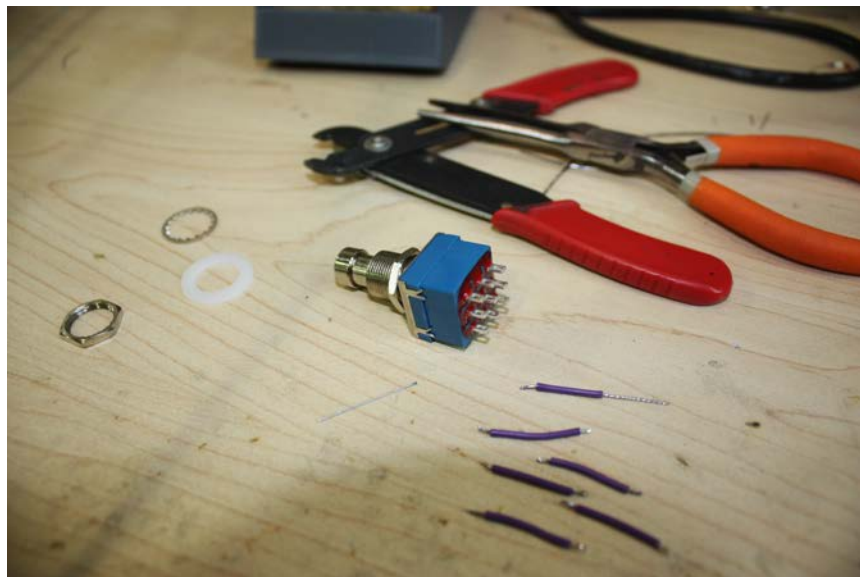
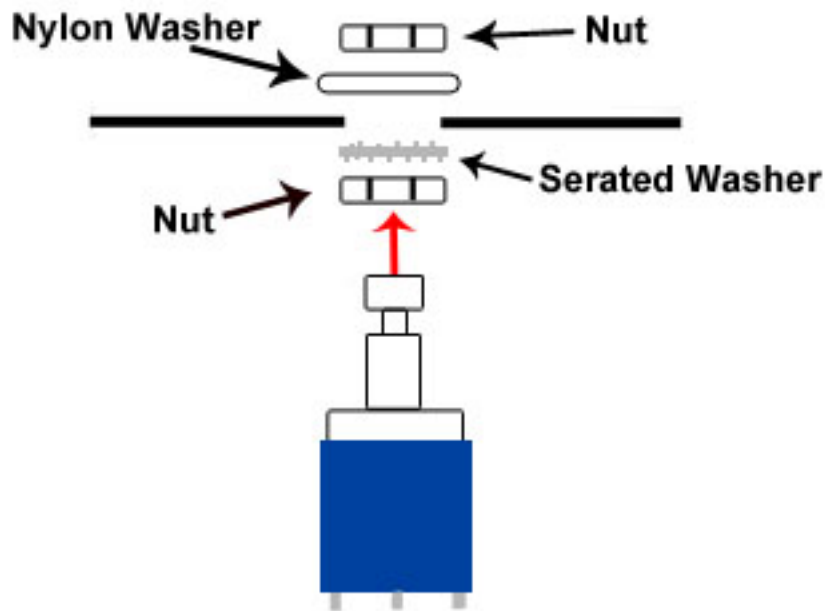


**Step 1:** Install the 1/4" jacks to the enclosure.

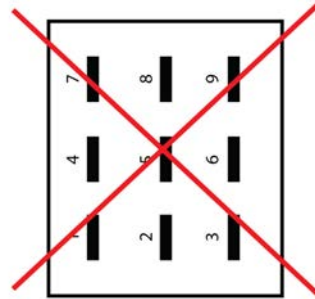
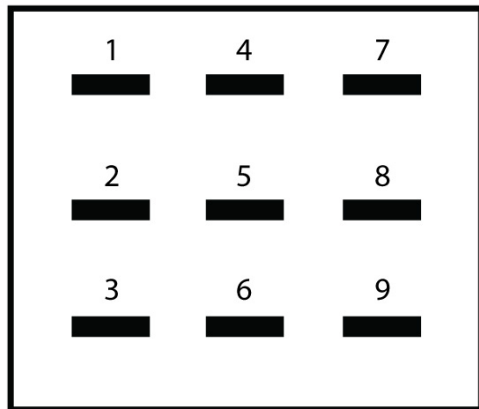
**Step 2:** Install the footswitch. Orient the footswitch so that the flat sides of the solder lugs are like the diagram below.

**NOTE:** There are no actual number markings on the footswitch. There are two correct ways you can orient the footswitch. They are both 180 degrees of each other. Either way is fine. It does not matter as long as the flat sides of the solder lugs are running horizontal, not vertical.

**NOTE:** It may be easier to wire up the foot switch before installing it into the pedal. There will be more room to work & it will be much easier to thread the lug 4 to lug 9 jumper.



## FOOT SWITCH SOLDER LUG DESIGNATIONS

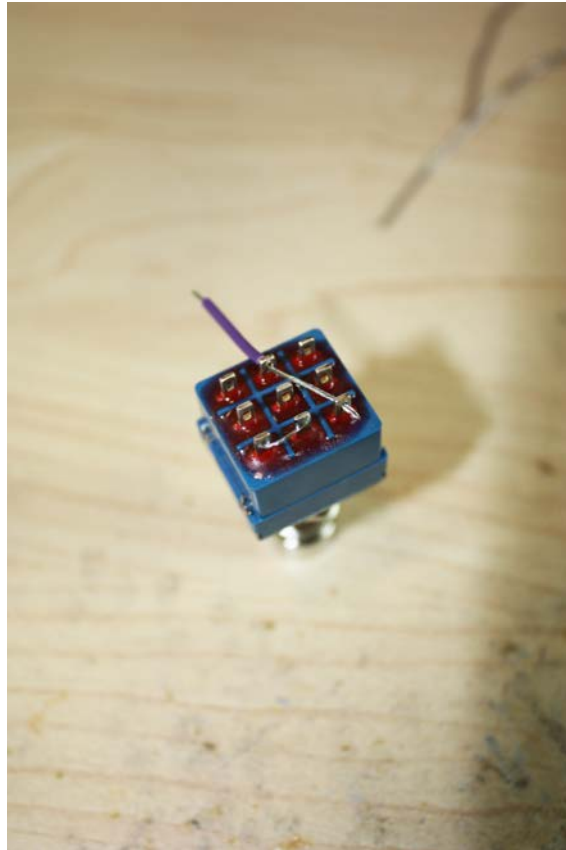


### Step 3: Wiring the foot switch.

- Make a jumper between lugs 3 & 6 from clippings from the resistors. Simply use your needle nose pliers to make a U shape & insert into lugs 3 & 6, then solder.

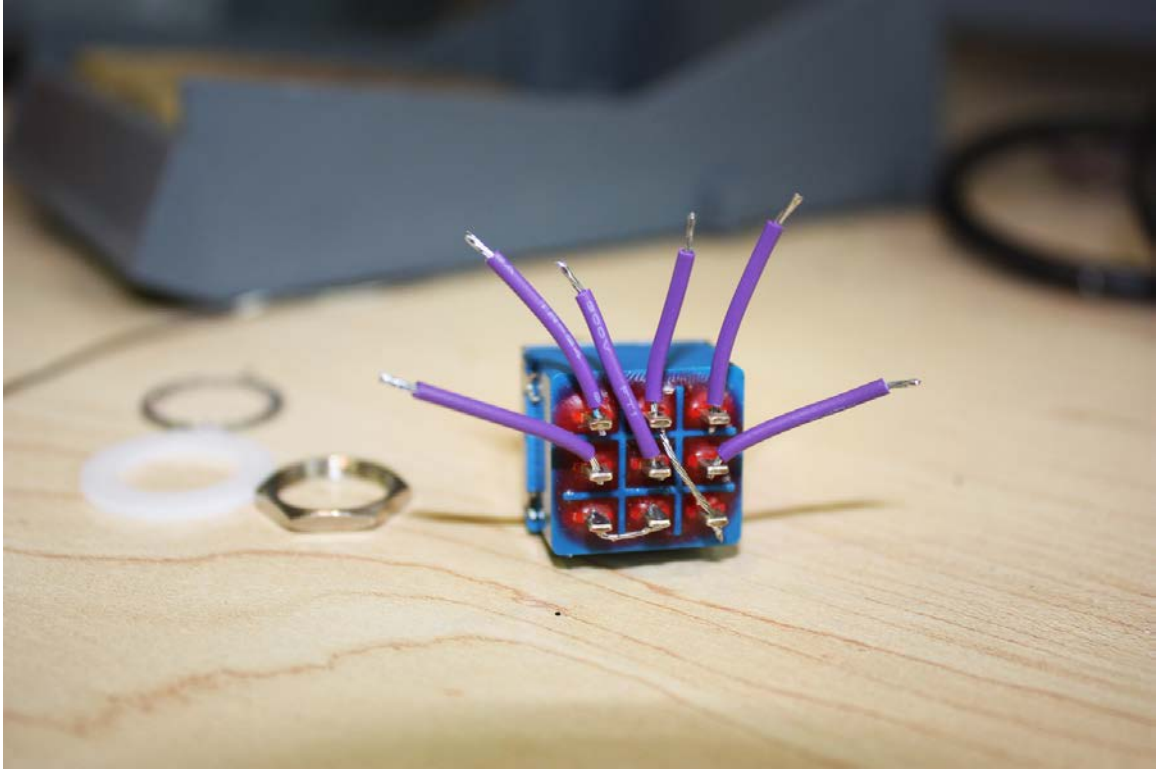


- Cut a 1.5" piece of wire. Strip 1/8" of one end. Strip 1/2" off the other end. Tin both ends. This will be used to connect lug/eyelet 4. The longer stripped end will be used to jumper lug 4 to 9.



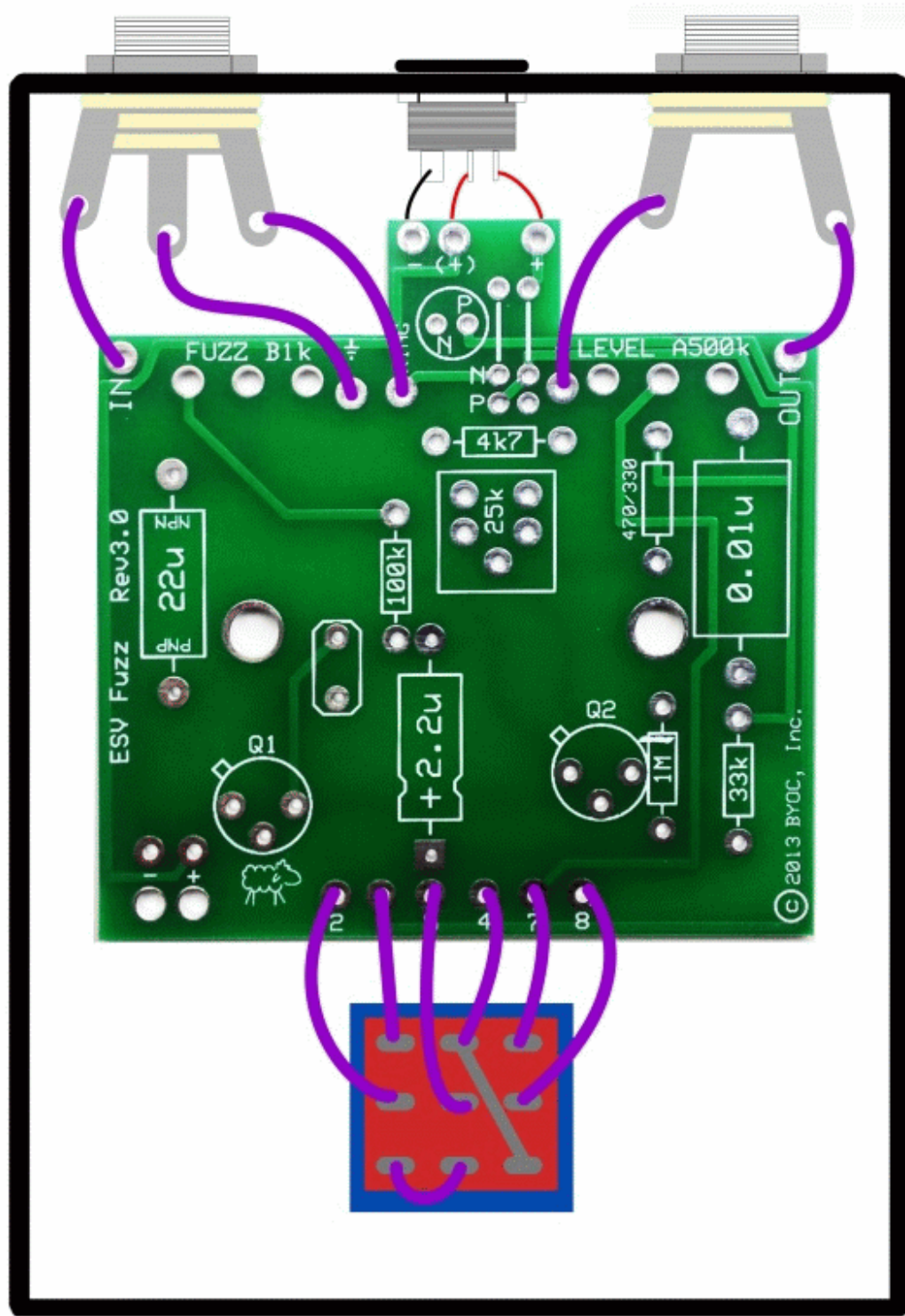
- Cut two 1" pieces of wire. Strip 1/8" off each end and tin. These will be used to connect lugs/eyelets 1 & 7
- Cut three 1.25" pieces of wire. Strip 1/8" off each end and tin. This will be used to connect lugs/eyelets 2, 5, & 8





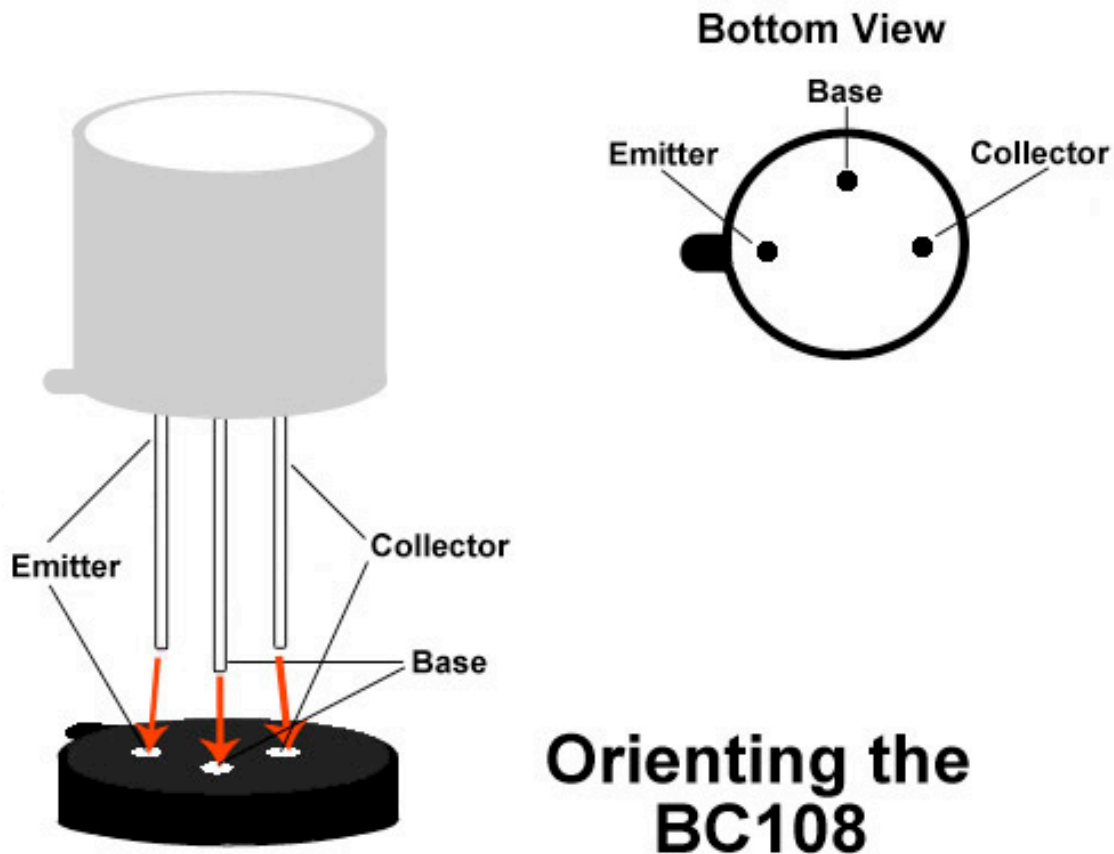
**Step 4:** Install the foot switch into the enclosure if it isn't already. Insert the foot switch wires into their respective eyelets on the PCB. You can insert them into the top side and solder on the top side as well. The solder pads should be large enough (if you are using a soldering iron that isn't too big) to allow you to do this without burning the PVC coating on the wires if you are careful. If you do singe the plastic on the wires, it's OK. It's not going to hurt anything. It's purely aesthetic.

**Step 5:** Connect the pre stripped and tinned wires to the 1/4" jacks.  
NOTE: Wires shown in black & red are merely to indicate ground wires & positive power wires, respectfully. Your kit provides purple wire; you may choose to detonate these in a wire color of your choice



## Orienting Transistor's/Finish up

**Step 1:** Install the transistors



Install the transistors. **Do not solder the transistors.** Simply push the lead wires into the appropriate socket holes. The transistor socket hole with the tab next to it will be the emitter. The lead wires on the germanium transistors will be rather long, so you will want to clip off the excess. But be sure to leave enough so you can bend the transistor down and out of the way when you seal the enclosure. But do not clip the transistor leads until you have tested your pedal and know that they work.

**Step 2:** Adjusting the bias trimpot.

There is no special trick to this. Simply turn the trimpot till it sounds good to you. Some people say that you must set the bias so that the collector of Q2 measures 4.5 - 5.5v, but this is only a matter of opinion. Trust your ears for this step. If you like the way it sounds at 6.5v, that perfectly fine.

## Operating Overview



Fuzz: Seriously?

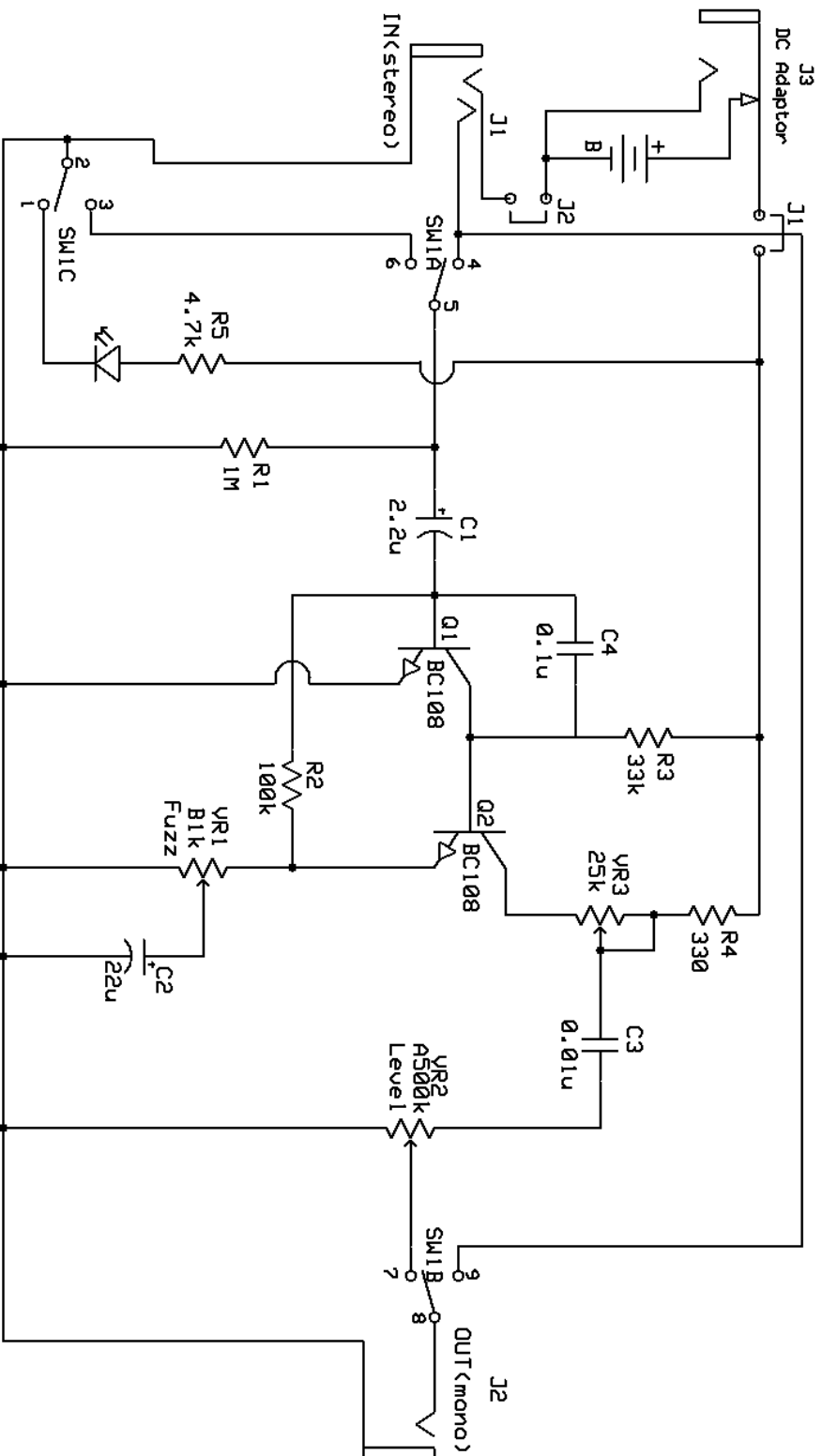
Volume: Really?

Power supply: Normal standard 2.1mm negative tip 9VDC power supply

Current Draw: 2.5mA

Input Impedance: 1Meg ohms

Output Impedance: 500k ohms



## Build Your Own Clone

### E.S.Y. Fuzz Negative Ground

drawn by:  
k. vanderhulst

Rev 3  
4/19/2013

©2013 BYOC, Inc.



**Please visit**  
**<http://buildyourownclone.com/board>**  
**for any technical support**

**copyright 2013**  
**BYOC, Inc.**