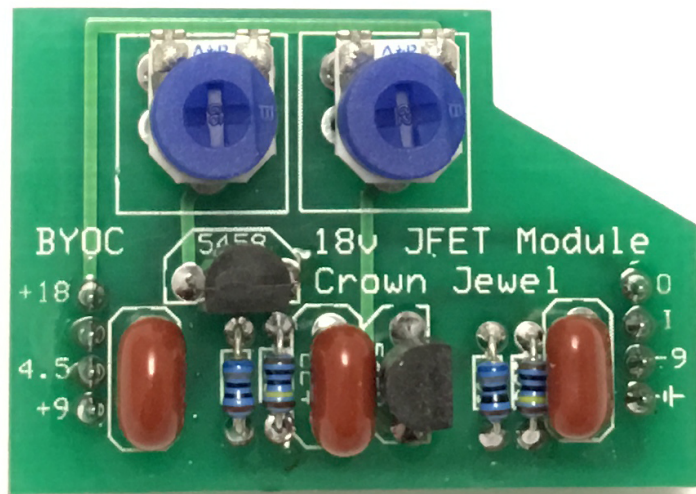


Build Your Own Clone Crown Jewel JFET Module Instructions



Parts list for the Crown Jewel JFET Module Pack

Resistors:

2 - 680 Ohm/681 (Blue/Gray/Black/Black/Brown)
2 - 1M/105 (Brown/Black/Black/Yellow/Brown)

Capacitors:

3 - .22uF Film Cap (May say "224" on the body)

Transistors:

2 - 2N5458

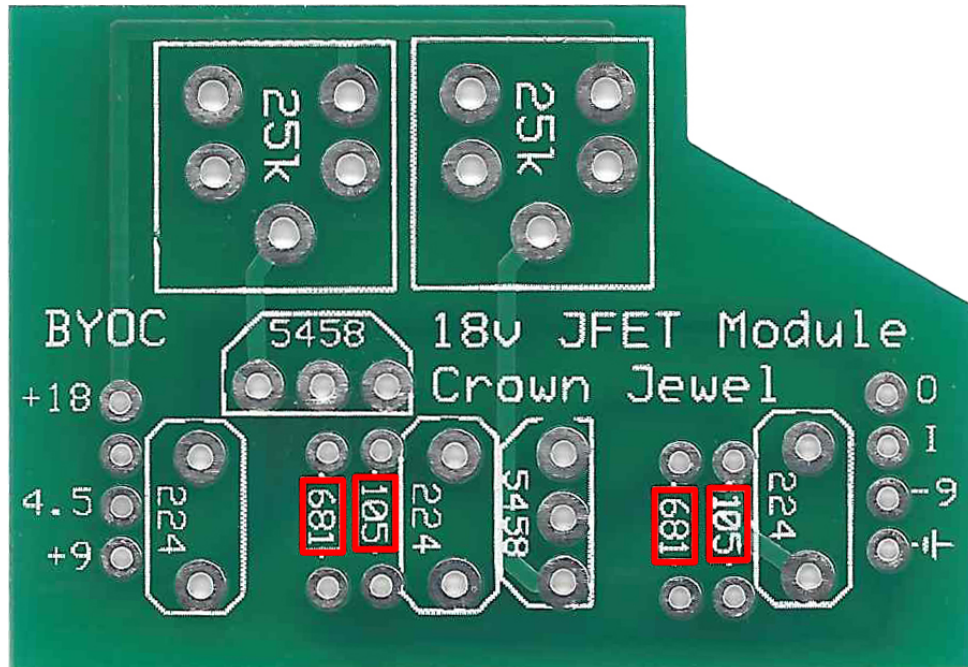
Potentiometers:

2 - 25k trimpots

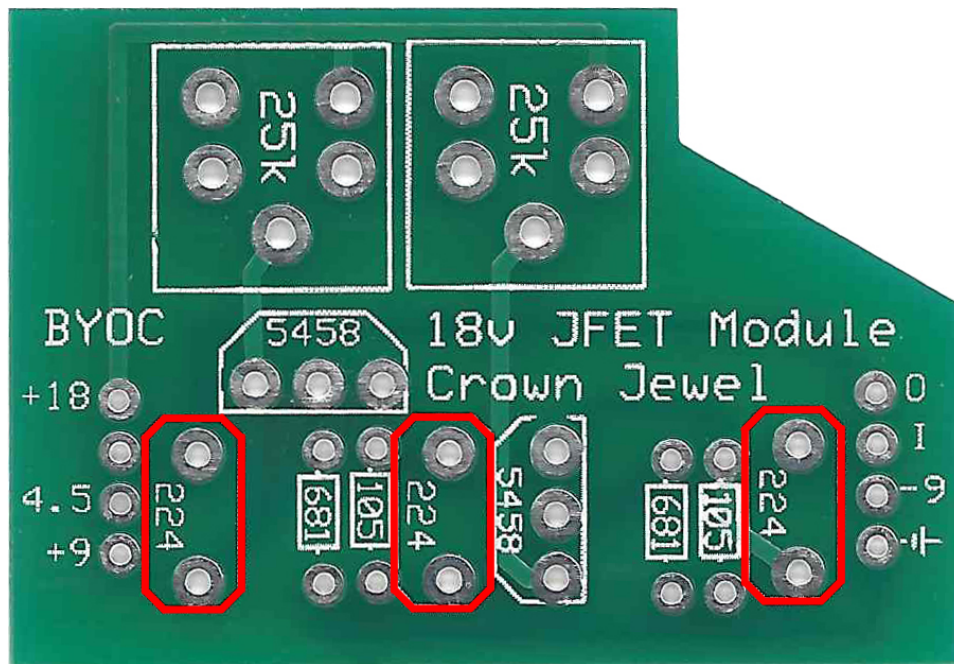
Hardware:

2 - 1X4 pins

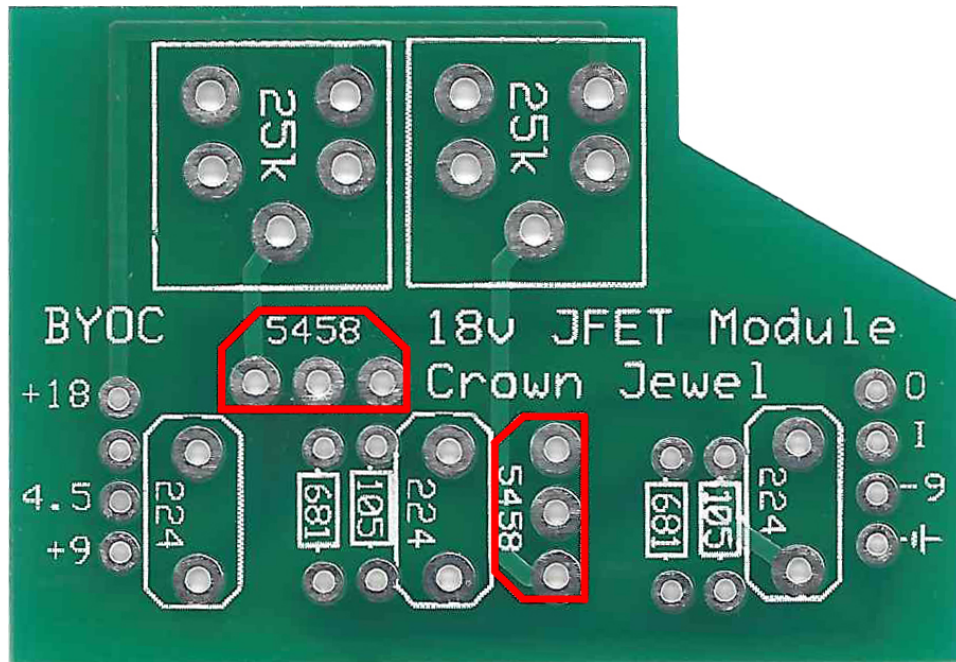
Step 1: Add the resistors. These are not polarized and can go in either direction.



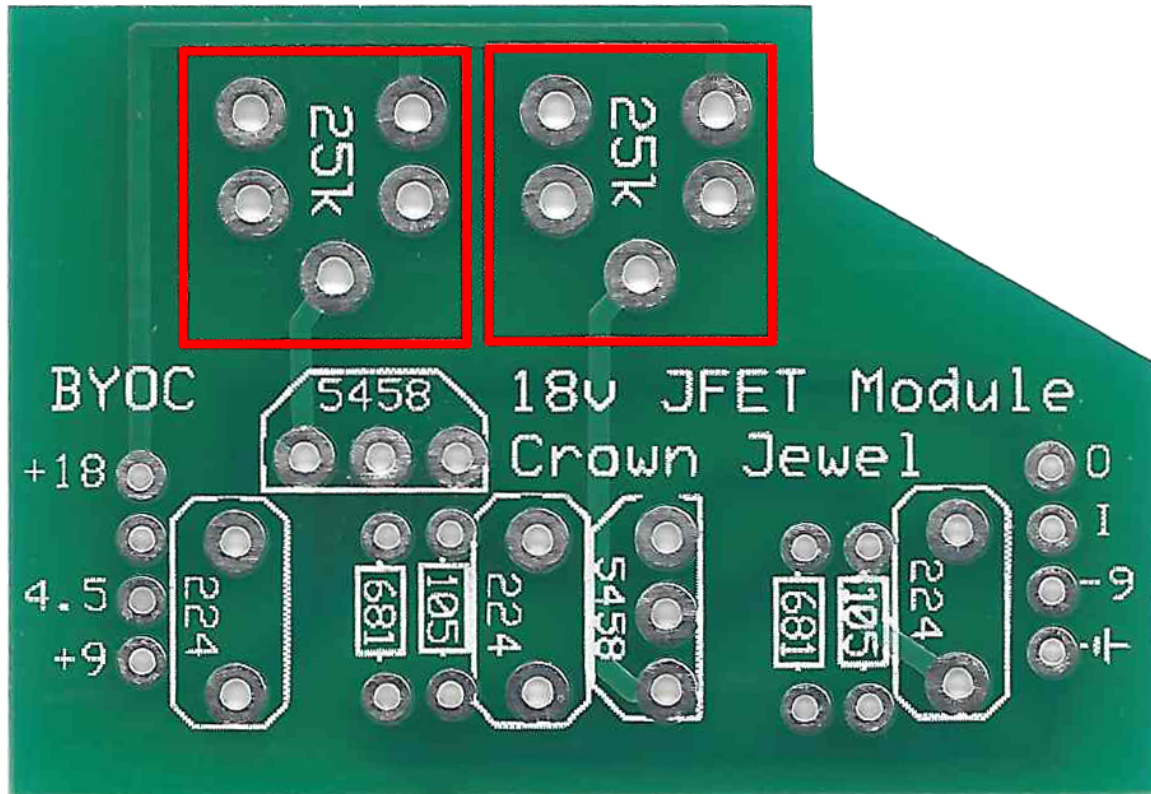
Step 2: Add the film capacitors. These are not polarized and can go in either direction.



Step 3: Add the JFETs. Be sure to match the flat side of the JFETs to the flat side of the PCB screenprint.

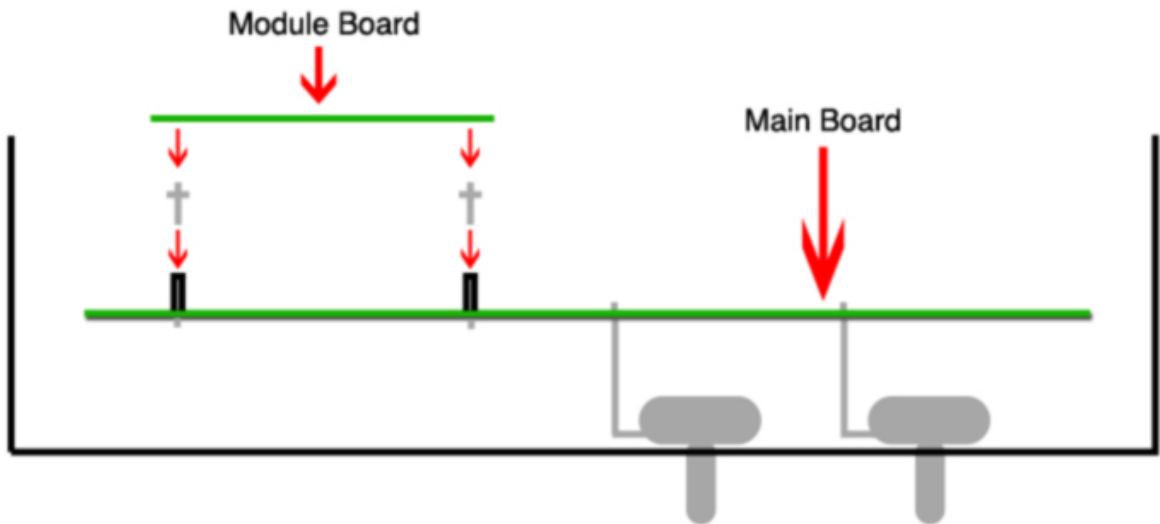


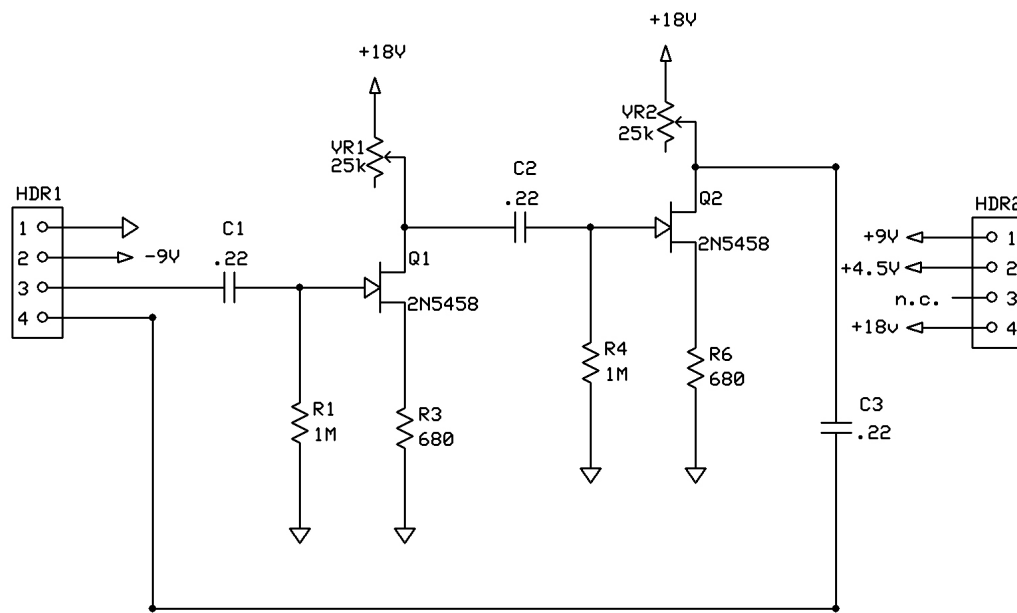
Step 4: Add the trimpot. There are 5 holes on the PCB, but your trimpot will only have 3 legs. This is to accommodate various styles of trimpots. Your trimpot will only orient in one direction.



When you are done with your build, you will need to tweak the trimpots. You will want to read about 9VDC on the middle pins of the trimpots.

Step 5: Insert the pins into the Crown Jewel header spots as shown below be sure to place the longer end of the pins into the headers. Once the pins are placed, guide the module board onto the pins and press down slightly so the module is sitting flush on the pins. Solder the top-side of the module at the pins. This helps align the pins and headers to the module board.





Build Your Own Clone		
Crown Jewel/JFET Module		
Designed by:	Rev 1.0	Copyright 2017
K. Vonderhulls	3/14/2017	