

Build Your Own Clone Mouse Kit Instructions



Warranty:

BYOC, Inc. guarantees that your kit will be complete and that all parts and components will arrive as described, functioning and free of defect. Soldering, clipping, cutting, stripping, or using any of the components in any way voids this guarantee. BYOC, Inc. guarantees that the instructions for your kit will be free of any major errors that would cause you to permanently damage any components in your kit, but does not guarantee that the instructions will be free of typos or minor errors. BYOC, Inc. does not warranty the completed pedal as a whole functioning unit, nor do we warranty any of the individual parts once they have been used. If you have a component that is used, but feel it was defective prior to you using it, we reserve the right to determine whether or not the component was faulty upon arrival. Please direct all warranty issues to: sales@buildyourownclone.com This would include any missing parts issues.

Return:

BYOC, Inc. accepts returns and exchanges on all products for any reason, as long as they are unused. We do not accept partial kit returns. Returns and exchanges are for the full purchase price less the cost of shipping and/or any promotional pricing. Return shipping is the customer's responsibility. This responsibility not only includes the cost of shipping, but accountability of deliver as well. Please contact sales@buildyourownclone.com to receive a return authorization before mailing.

Tech Support:

BYOC, Inc. makes no promises or guarantees that you will successfully complete your kit in a satisfactory manor. Nor does BYOC, Inc. promise or guarantee that you will receive any technical support. Purchasing a product from BYOC, Inc. does not entitle you to any amount of technical support. BYOC, Inc. does not promise or guarantee that any technical support you may receive will be able to resolve any or all issues you may be experiencing.

That being said, we will do our best to help you as much as we can. Our philosophy at BYOC is that we will help you only as much as you are willing to help yourself. We have a wonderful and friendly DIY discussion forum with an entire section devoted to the technical support and modifications of BYOC kits.

www.byoelectronics.com/board

When posting a tech support thread on the BYOC forum, please post it in the correct lounge, and please title your thread appropriately. If everyone titles their threads "HELP!" then it makes it impossible for the people who are helping you to keep track of your progress. A very brief description of your specific problem will do. It will also make it easier to see if someone else is having or has had the same problem as you. The question you are about to ask may already be answered. Here is a list of things that you should include in the body of your tech support thread:

1. A detailed explanation of what the problem is. (more than, "It doesn't work, help")
2. Pic of the topside of your PCB.
3. Pic of the underside of your PCB.
4. Pic that clearly shows your footswitch/jack wiring and the wires going to the PCB
5. A pic that clearly shows your wiring going from the PCB to the pots and any other switches(only if your kit has non-PC mounted pots and switches)
6. Is bypass working?
7. Does the LED come on?
8. If you answered yes to 6 and 7, what does the pedal do when it is in the "on" position?
9. Battery or adapter (if battery, is it good? If adapter, what type?)

Also, please only post photos that are in focus.

Copyrights:

All material in this document is copyrighted 2019 by BYOC, Inc.

Mouse Kit Instruction Index

Parts Checklist.....	page 5-6
Populating the Circuit Board.....	page 7-13
Main PCB Assembly.....	page 15-19
Wiring.....	page 20
Installing the IC/Finishing up.....	page 21
Operation Overview.....	page 23
Schematic.....	page 24

This is what your kit should look like when it's complete. Your kit may come with different color capacitors, switches etc. Don't be alarmed by this. They all still do the exact same thing.



Parts Checklist for the Mouse Kit

Resistors:	Metal Film (5-band)	Carbon (4-band)
1 - 47 ohm	(Yellow/Purple/Black/Gold/Brown)	(Yellow/Purple/Black/Gold)
1 - 560 ohm	(Green/Blue/Black/Black/Brown)	(Green/Blue/Brown/Gold)
2 - 1k	(Brown/Black/Black/Brown/Brown)	(Brown/Black/Red/Gold)
1 - 1.5k	(Brown/Green/Black/Brown/Brown)	(Brown/Green/Red/Gold)
1 - 4.7k	(Yellow/Purple/Black/Brown/Brown)	(Yellow/Purple/Red/Gold)
1 - 10k	(Brown/Black/Black/Red/Brown)	(Brown/Black/Orange/Gold)
2 - 100k	(Brown/Black/Black/Orange/Brown)	(Brown/Black/Yellow/Gold)
1 - 470k	(Yellow/Purple/Black/Orange/Brown)	(Yellow/Purple/Yellow/Gold)
2 - 1M	(Brown/Black/Black/Yellow/Brown)	(Brown/Black/Green/Gold)

Visit www.byocelectronics.com/resistorcodes.pdf for more information on how to differentiate resistors.

Capacitors:

- 1 - 33pf ceramic disc (33 or 330 small orange)
- 1 - 100pf ceramic disc (101 small orange)
- 1 - .001uf film (102 or 1n)
- 1 - .0033uf (332 or 3n3)
- 2 - .022uf film (223 or 22n)
- 1 - .1uf film (104 or 100n)
- 2 - 1uf aluminum electrolytic
- 1 - 2.2uf aluminum electrolytic
- 2 - 4.7uf aluminum electrolytic
- 1 - 100uf aluminum electrolytic

Visit www.byocelectronics.com/capcodes.pdf for more info on how to differentiate capacitors.

Diodes:

- 1 - 1N4001 (black with silver stripe)
- 2 - 1N4148 (small orange with black stripe)
- 2 - Red LED
- 2 - 1N60P (orange with black stripe. Slightly larger than 1N4148)

Sockets:

- 1 - 8-pin IC socket

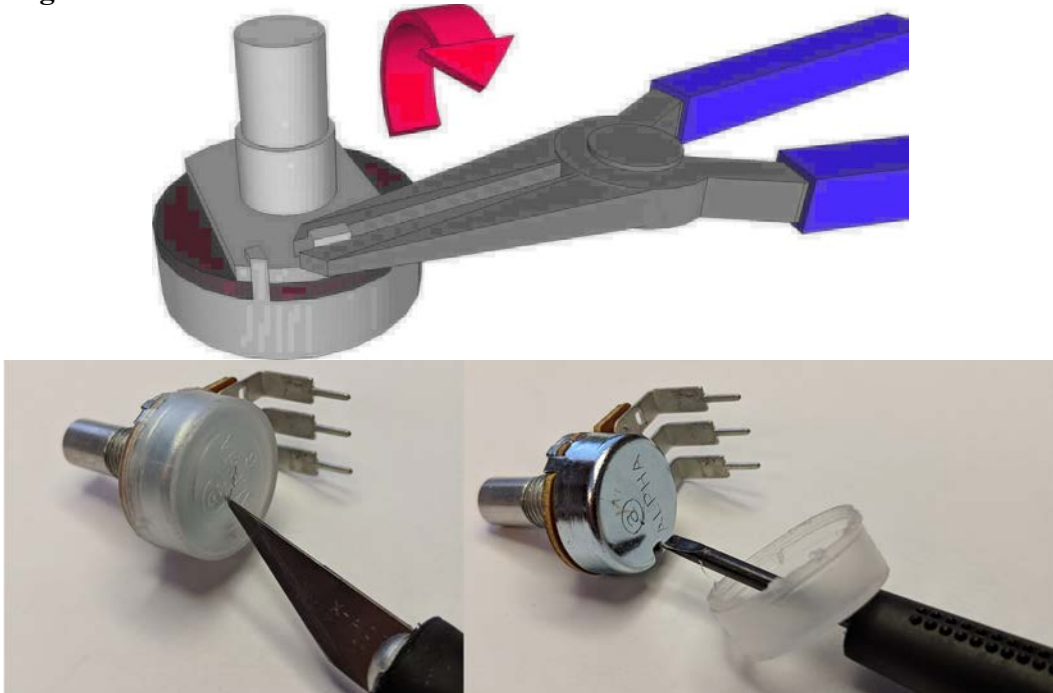
Transistors:

- 1 - 2N5458 or similar JFET

IC:

- 1 - LM308

Potentiometers: Snap off the small tabs on the top of the pots with a pair of needle nose pliers. If your pots have covers, remove them before continuing. You might have to cut a slit in the cover with a blade and use a small screwdriver to get leverage.



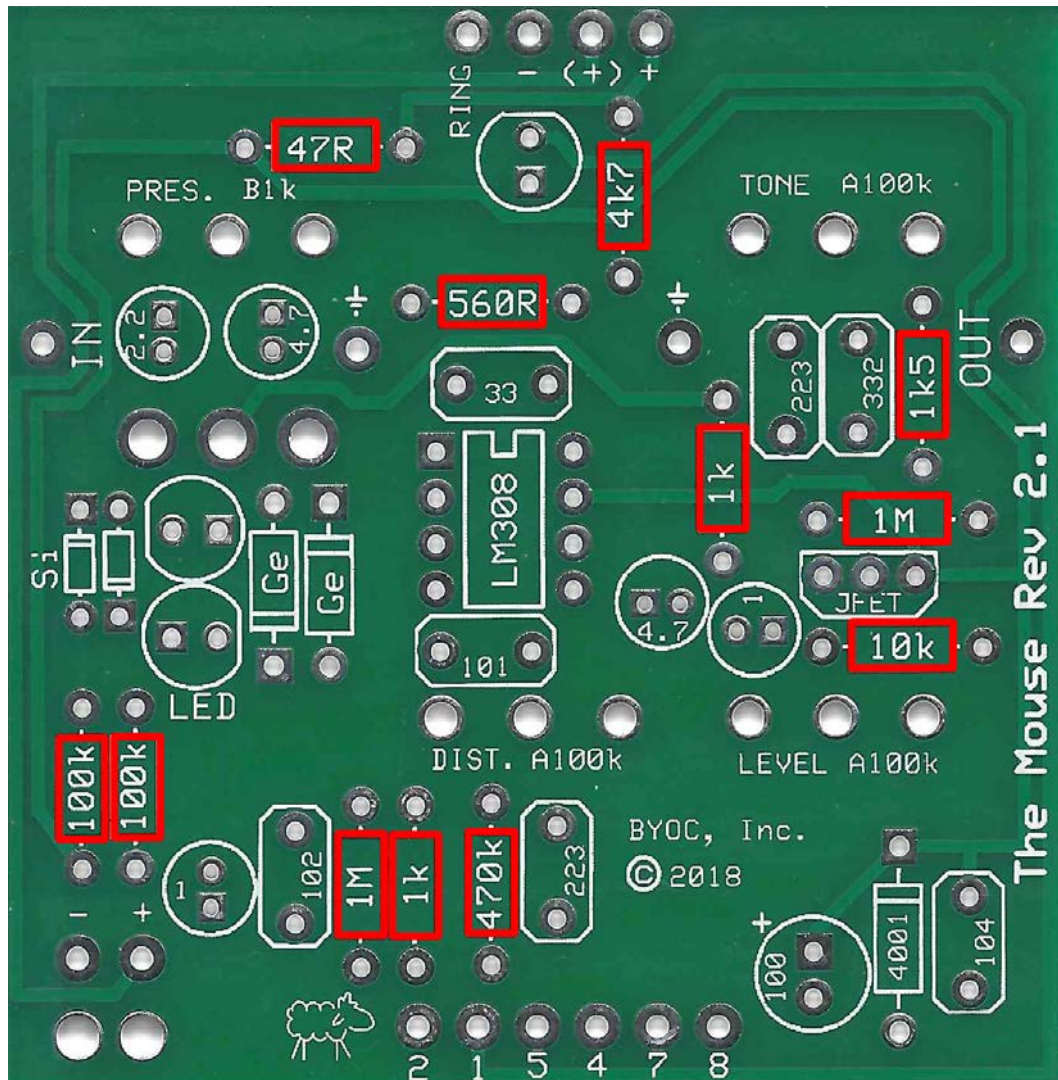
3 - A100k (VOLUME, DISTORTION, FILTER)
1 - B1k (PRESENCE)

Hardware:

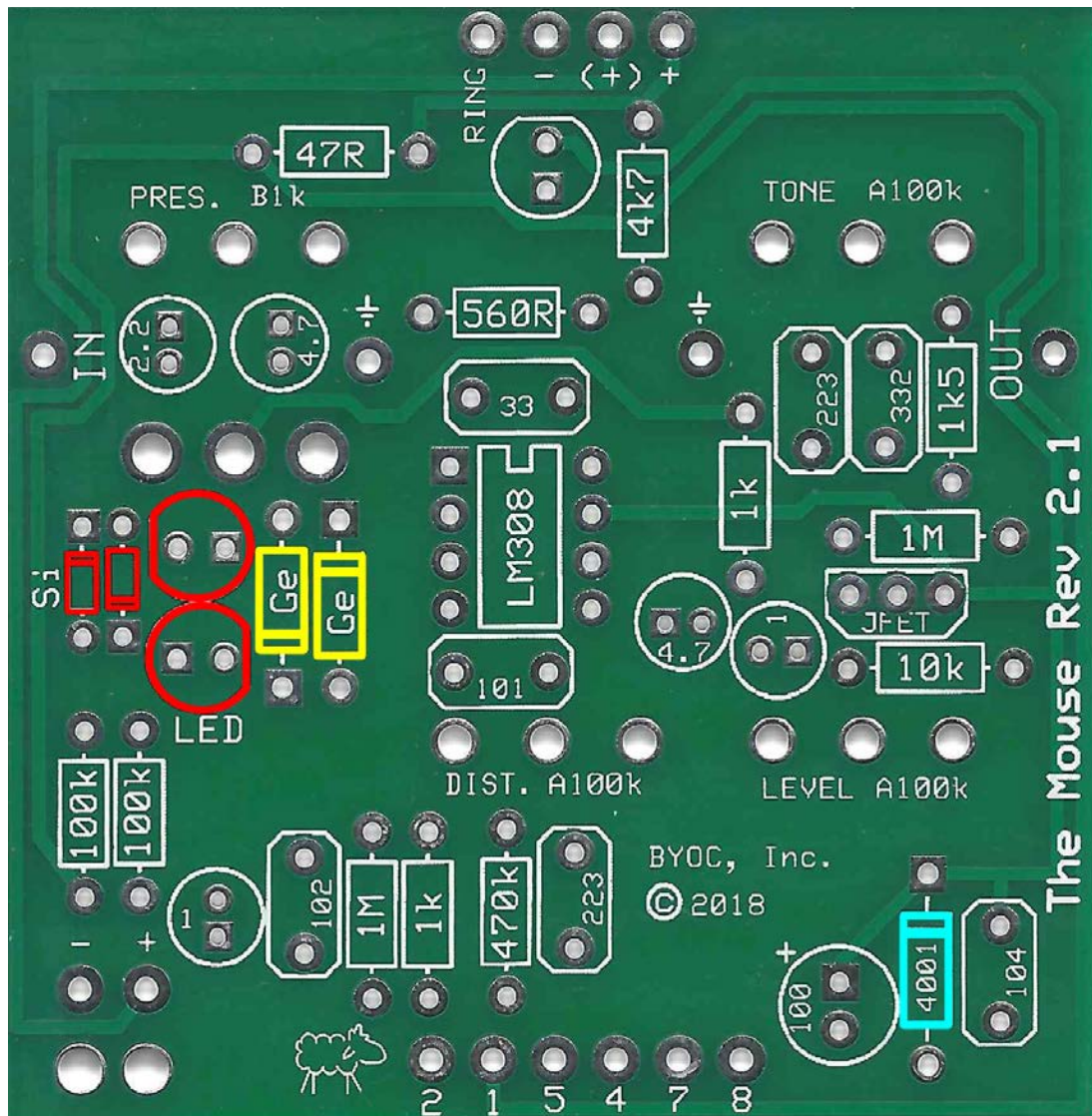
- 1 - Predrilled enclosure w/ 4 screws
- 1 - Mouse circuit board
- 1 - 3pdt footswitch
- 1 - SPDT PC-Mount On-Off-On toggle switch
- 1 - AC adaptor jack
- 2 - Enclosed Jacks
- 1 - Red LED
- 1 - battery snap
- 4 – rubber bumpers
- 2 – lock washers (for in and out jacks)
- hook-up wire

Populating the Circuit Board

Step 1: Add all the resistors. Resistors are not polarized and can be inserted in either direction.

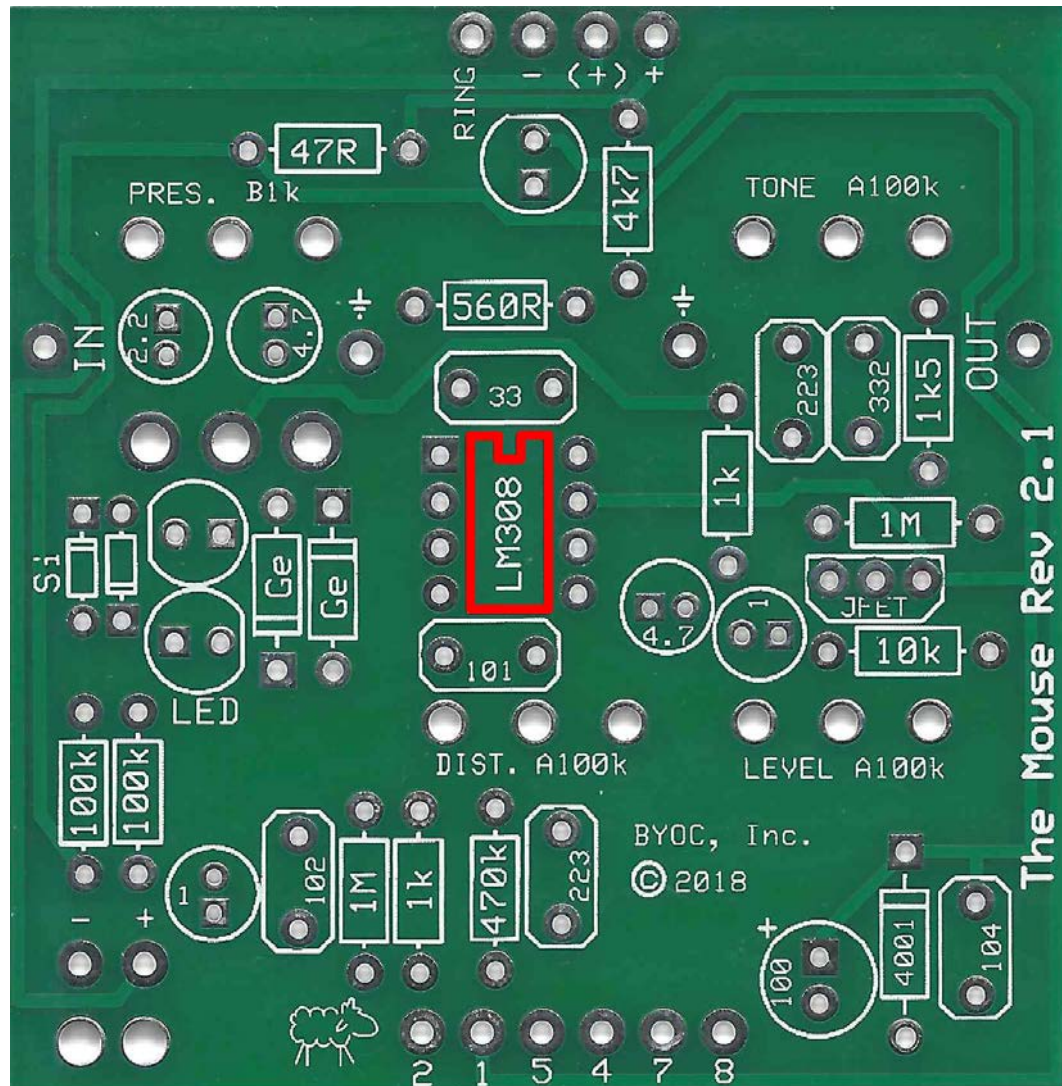


Step 2: Add the diodes. Be sure to match the end of the diodes with the stripe to the layout on the PCB. The striped end should go in the square solder pad. At the same time, add the two LEDs. Match up the flat side of the LED to the flat side of the screenprint. The long leg will go in the square hole. The 1N4148 diodes are highlighted in red. The 1N60P diodes are highlighted in yellow. The 1N4001 diode is highlighted in blue. **The 1N60P diodes will be slightly larger than the 1N4148.**

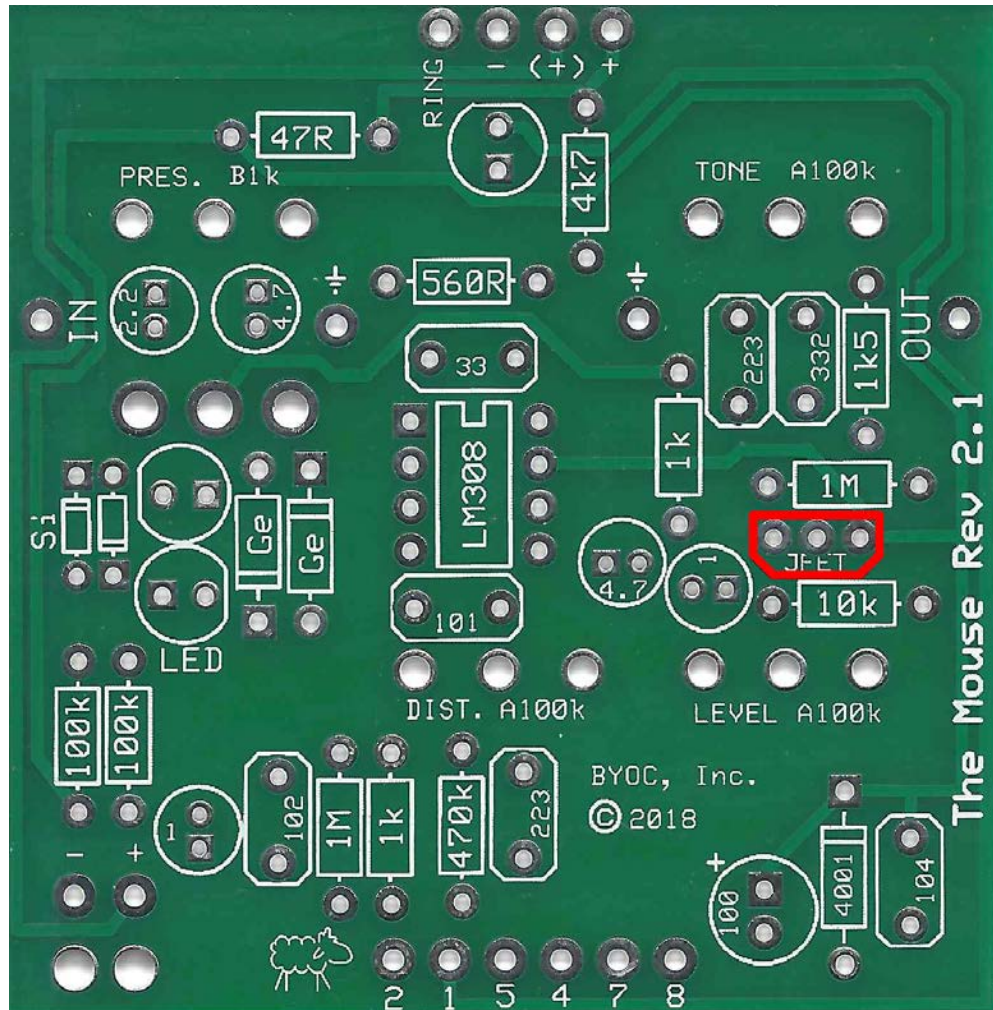


Step 3: Add the IC socket. ONLY SOLDER THE SOCKET!

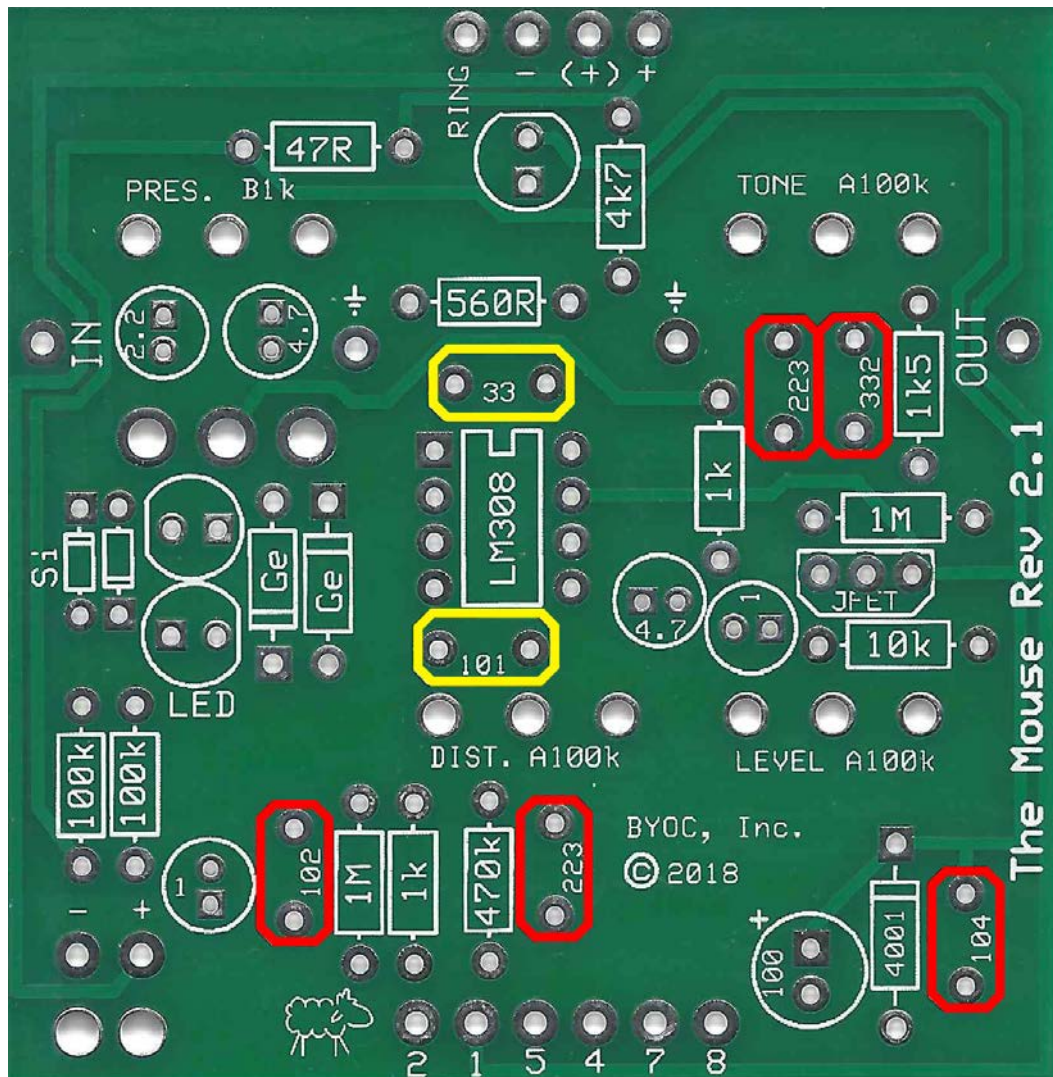
The socket gets soldered to the PCB. The IC (integrated circuit or “chip”) gets inserted into the socket. The actual IC never gets soldered. You will insert the IC into the socket after the entire pedal has been built. Refer to page 22 for instructions on inserting the IC.



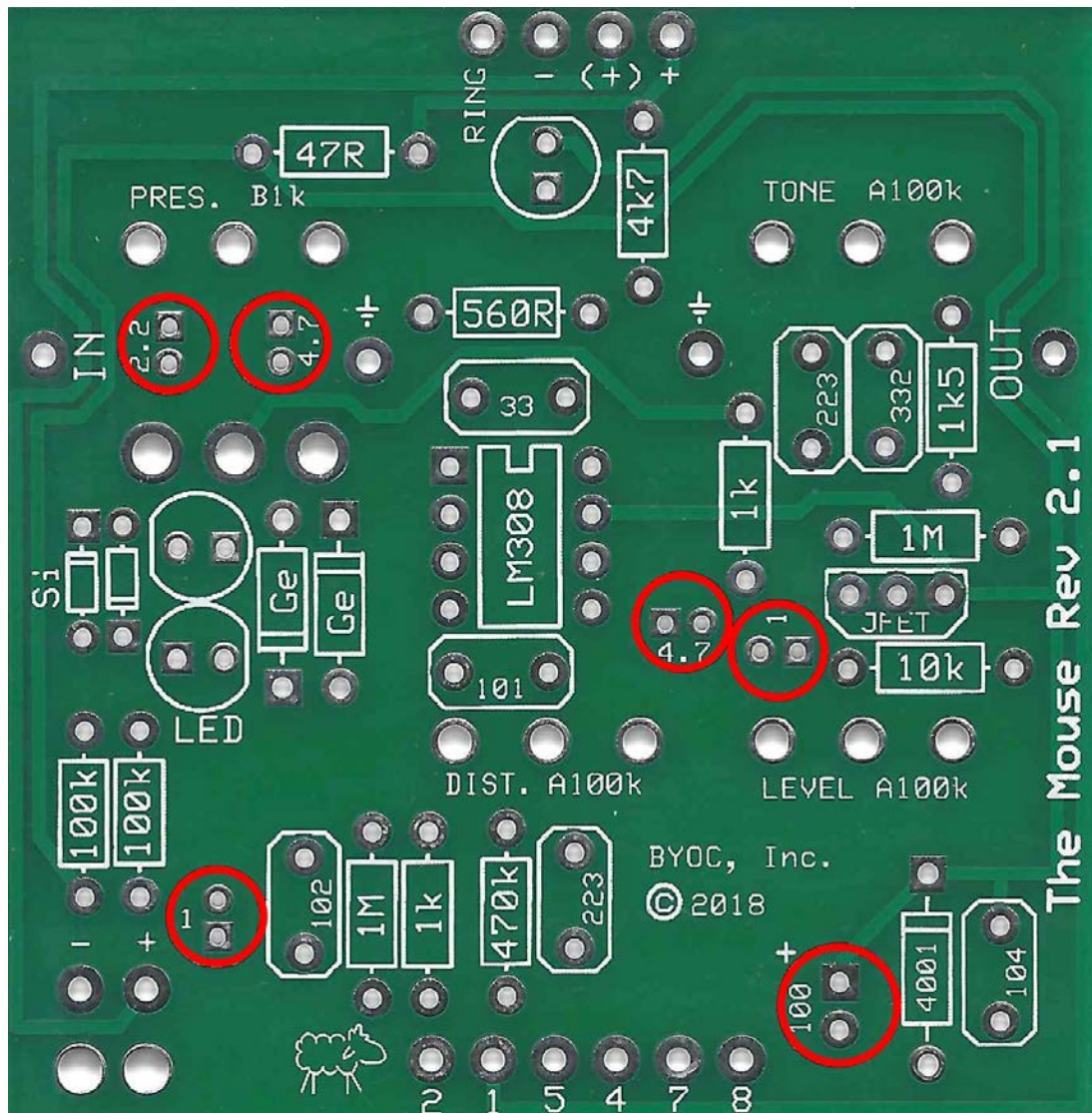
Step 4: Add the JFET. Orient it so that the flat side matches up with the flat side on the PCB layout.



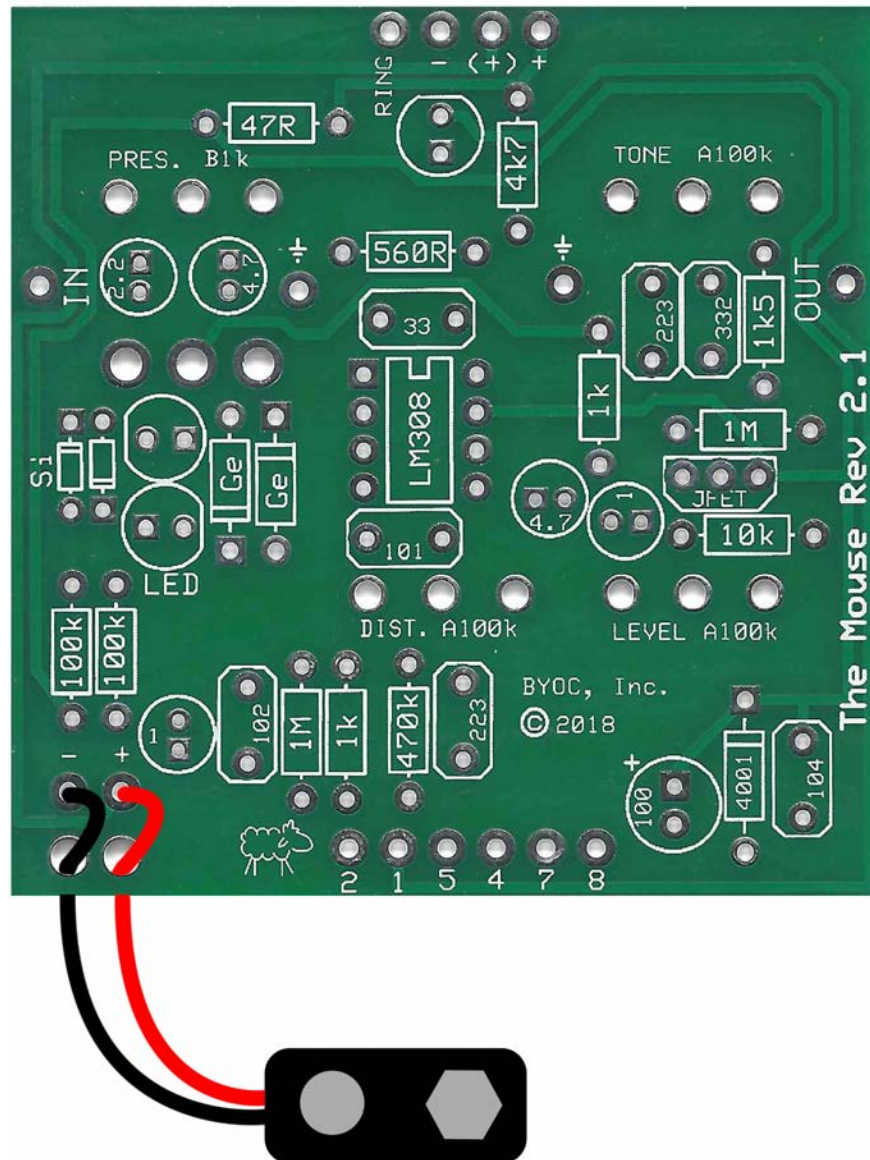
Step 5: Add the film and ceramic disc capacitors. These are non-polarized so they can go in either direction. The ceramic disc caps are highlighted in yellow



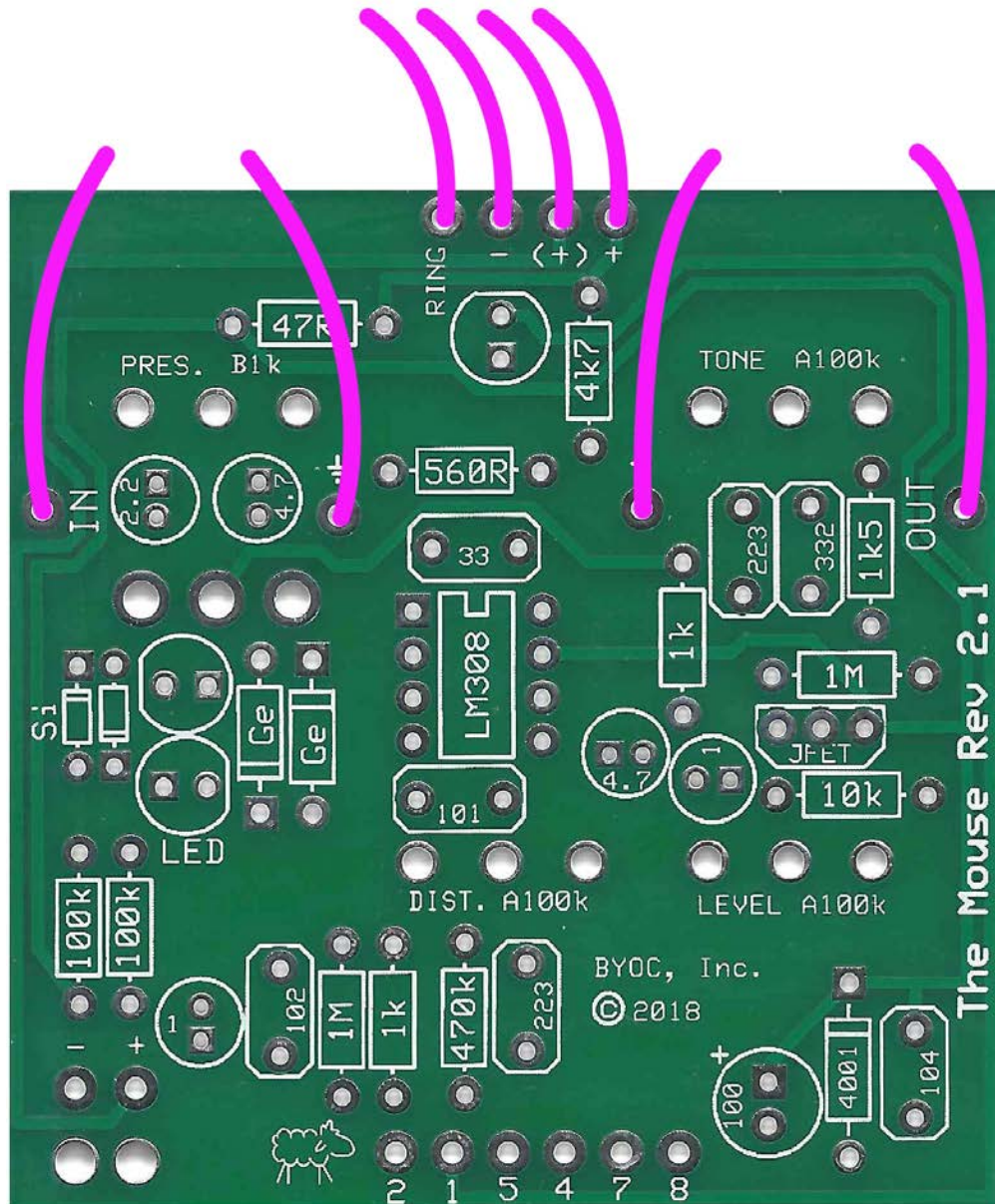
Step 6: Add the aluminum electrolytic capacitors. These ARE polarized, meaning there is a positive and negative end. The positive side will have a longer lead and goes in the square solder pad. The negative side will have a shorter lead and a stripe running along the body of the cap, and goes in the round solder pad.



Step 7: Add the battery snap. Thread the leads into the strain relief holes first through the bottom side of the PCB. Then insert the leads into their respective solder pad hole on the top side of the PCB. The red lead goes in the + hole and the black lead goes in the – hole.

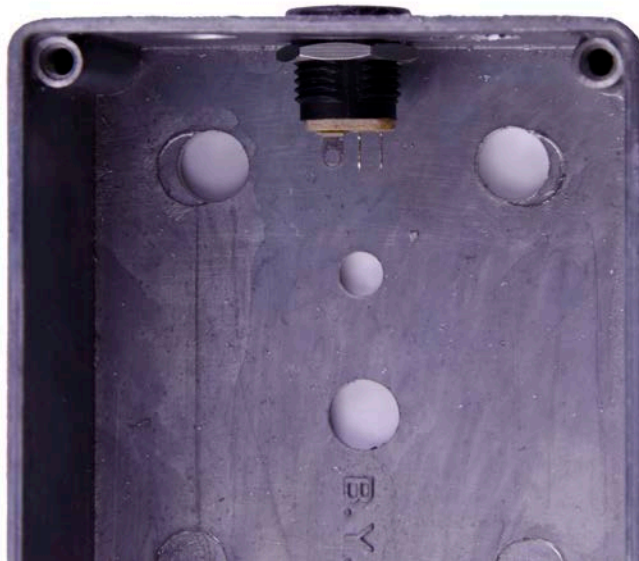


Step 8: Add wires to the IN, OUT, LED, POS, and the Ground eyelet located in the top of the board. . Start by cutting 4 3.5" pieces of wire. Strip 1/4" off each end and tin the ends. Tinning means to apply some solder to the stripped ends of the wires. This keeps the strands from fraying and primes the wire for soldering. Load the wires in from the top and solder on the bottom of the PCB.



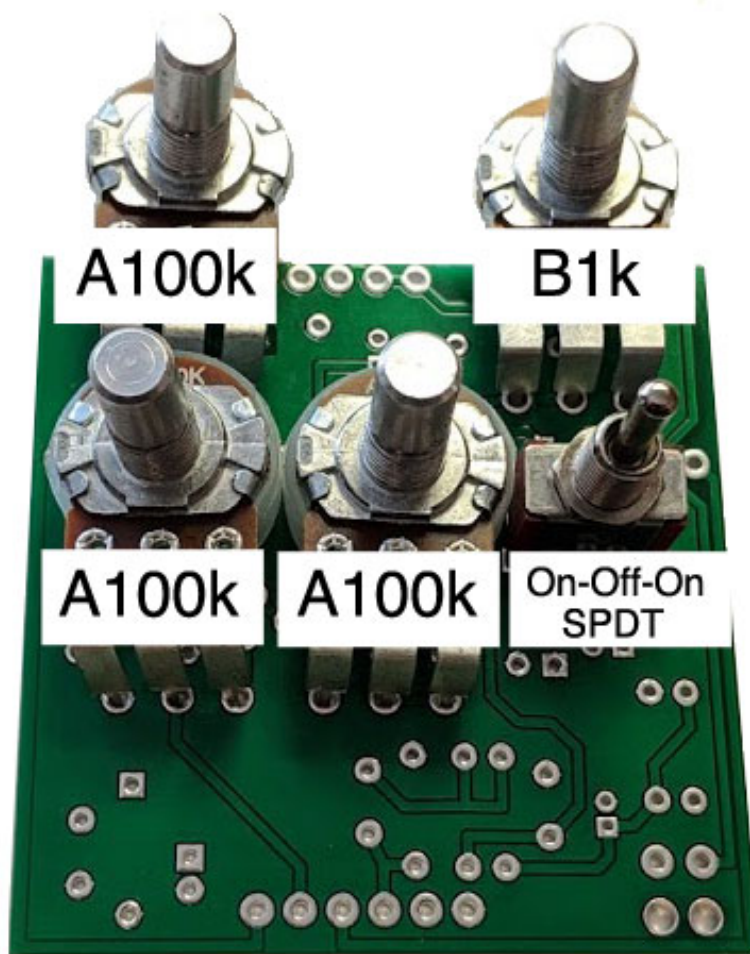
Main PCB Assembly

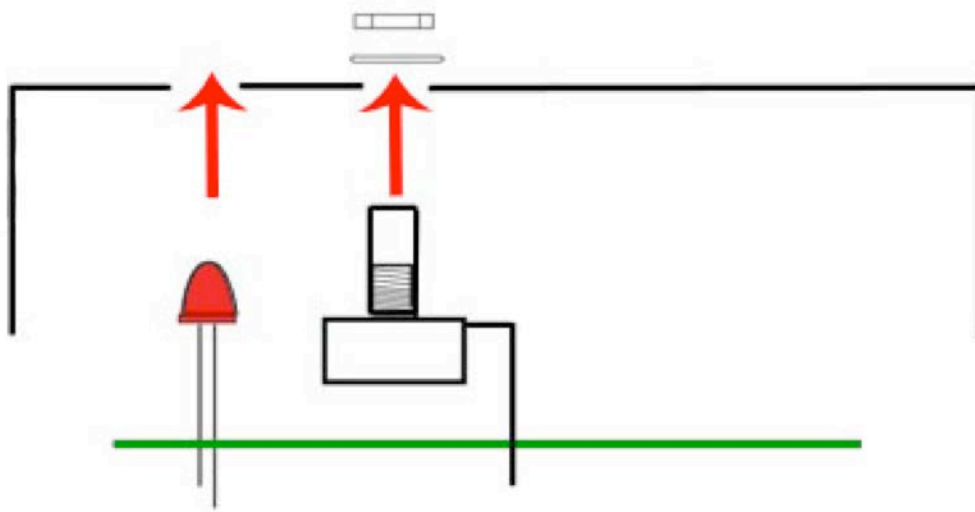
Step 1: Mount the DC adapter jack to the enclosure. Your kit may come with either an external thread or internal thread. Don't get confused by this. They still function exactly the same. You just thread the external nut on the outside and the internal nut on the inside. The picture below is of an internal nut jack.



BEFORE CONTINUING, REMOVE THE DUST COVER FROM THE A100k DIST POTENTIOMETER. YOU MAY NEED TO MAKE A SLIT IN THE COVER TO RELIEVE ANY VACCUUM BETWEEN THE COVER AND THE POTENTIOMETER.

Step 2: Flip the PCB over so that the bottom or solder side is up. Insert the three potentiometers, and the LED into the bottom side of the PCB. **DO NOT SOLDER ANYTHING YET!!!** The LED will have one lead that is longer than the other. **THIS WILL GO INTO THE SQUARE SOLDER HOLE.** Don't forget to remove the nuts and washers from the pots and also to snap off the tabs before you do this step.



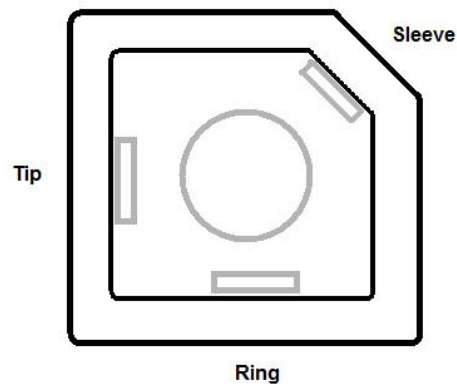


Step 3: Hold the PCB in one hand so that the component side of the PCB is in the palm of your hand and the bottom side with the pots and LED are facing up. Now use your other hand to guide the predrilled enclosure onto the PCB assembly so that the pots and LED all go into their respective holes. Once the PCB assembly is in place, secure it by screwing on the washers and nuts for the pots. Only tighten them with your fingers. **You do not want them very tight yet.** Make sure you've removed the nuts and washers from the pots and that you've also snapped the tabs off the pots as well before installing.

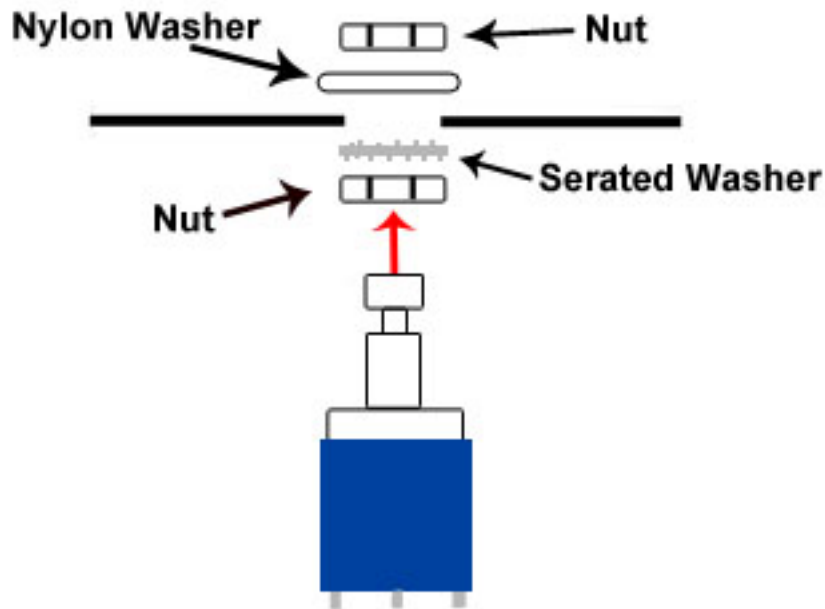
Step 4: Turn the entire pedal over so that the component side of the PCB is facing up. Lift the PCB up off the pots about 2mm just to make sure that the back of the PCB does not short out against the pots. Make sure the PCB is level and symmetrically seated inside the enclosure.

Step 5: Solder the pots and LED. You will solder these parts on the component side of the PCB. After you have soldered them in place, be sure to tighten up their nuts. Be careful not to burn any of the components on the PCB. If you do, it won't harm anything, but it will look ugly.

Enclosed Jack



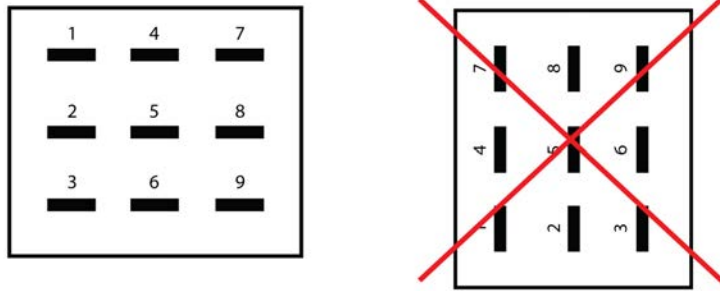
You will want to place the jacks into the enclosure so the sleeve terminal is facing the right like the picture above. Be sure to remember the lock washers so the jacks don't spin on their own.



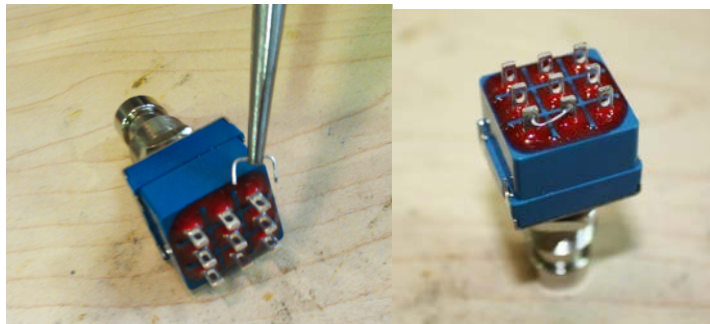
Step 3: Install the footswitch. Orient the footswitch so that the flat sides of the solder lugs are like the diagram below.

NOTE: There are no actual number markings on the footswitch. There are two correct ways you can orient the footswitch. They are both 180 degrees of each other. Either way is fine. It does not matter as long as the flat sides of the solder lugs are running horizontal, not vertical.

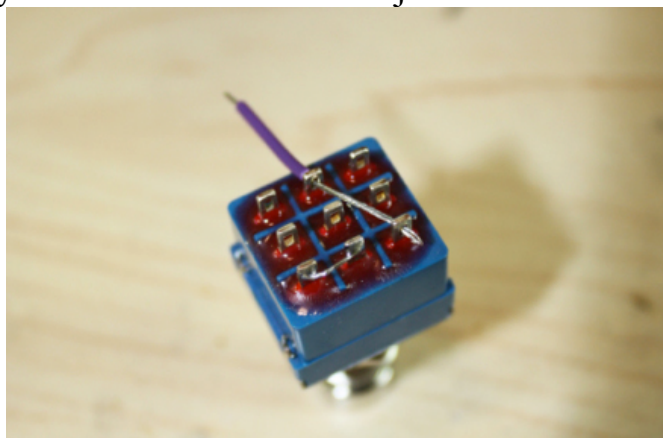
FOOT SWITCH SOLDER LUG DESIGNATIONS



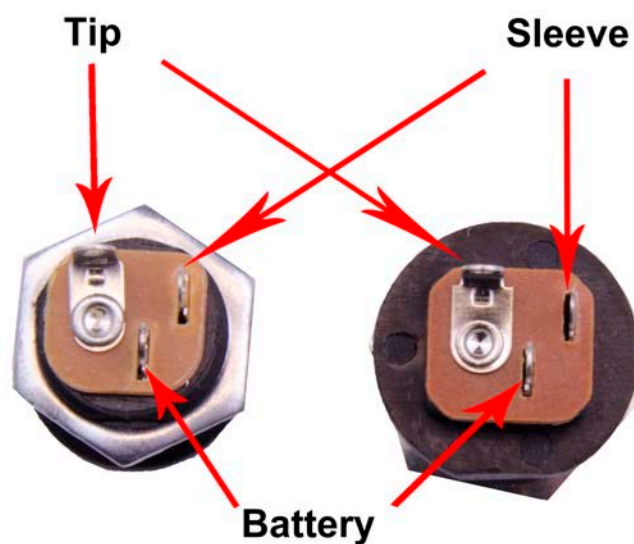
Step 3a: Make a jumper between lugs 3 & 6 from clippings from the resistors. Simply use your needle nose pliers to make a U shape & insert into lugs 3 & 6, then solder.



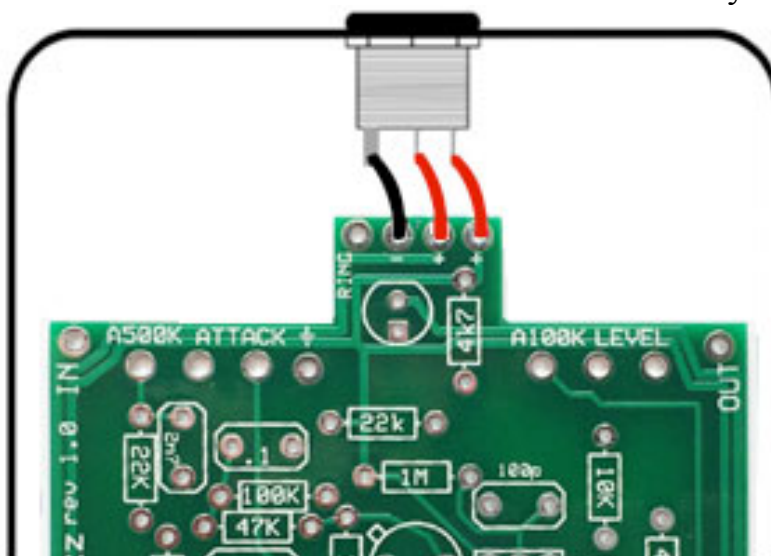
Step 3b: Connect a wire to LUG 4 that also jumpers to LUG9. Strip about 1" off one end. Make sure there is enough insulated wire to make the connection to the TIP of the in jack. Carefully tin the stripped end. You may want to twist the wire strands together tightly before tinning. Thread the stripped end through LUGs 4 and 9. This can be a little tricky. If this part is too frustrating for you, you can just run a separate wire to connect LUGs 4 and 9. Just be sure to solder the two wires at LUG 4 at the same time so you only need to make one solder joint.



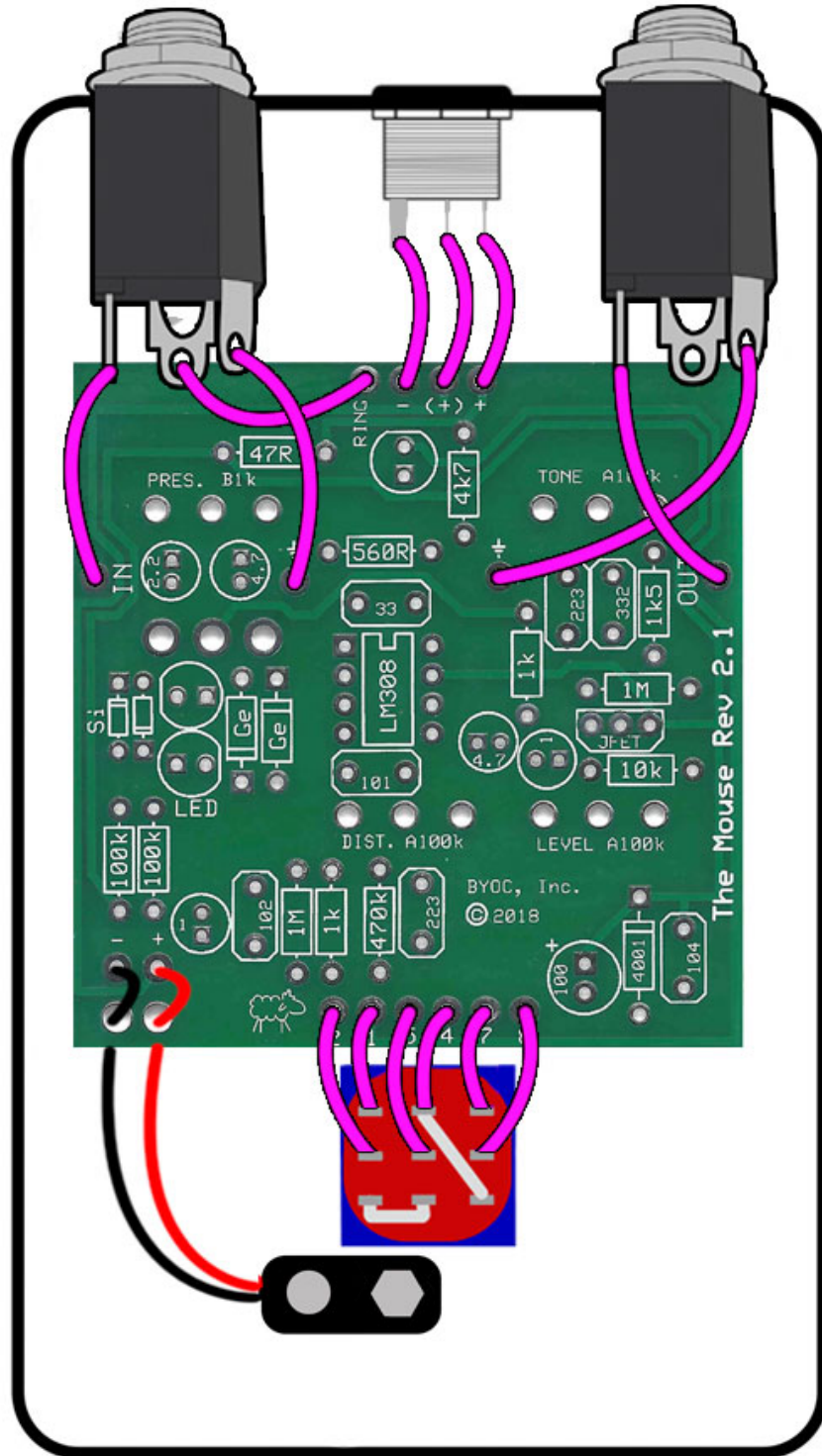
Wiring



Step 1: Connect the TIP (negative) terminal of the DC adapter jack to the eyelet on the PCB labeled “-“. Connect the SLEEVE of the DC adapter jack to the eyelet on the PCB labeled “+” farthest to the right. Connect the battery disconnect terminal of the DC adapter jack to the second eyelet on the PCB labeled “+” located in the middle of the other two eyelets .

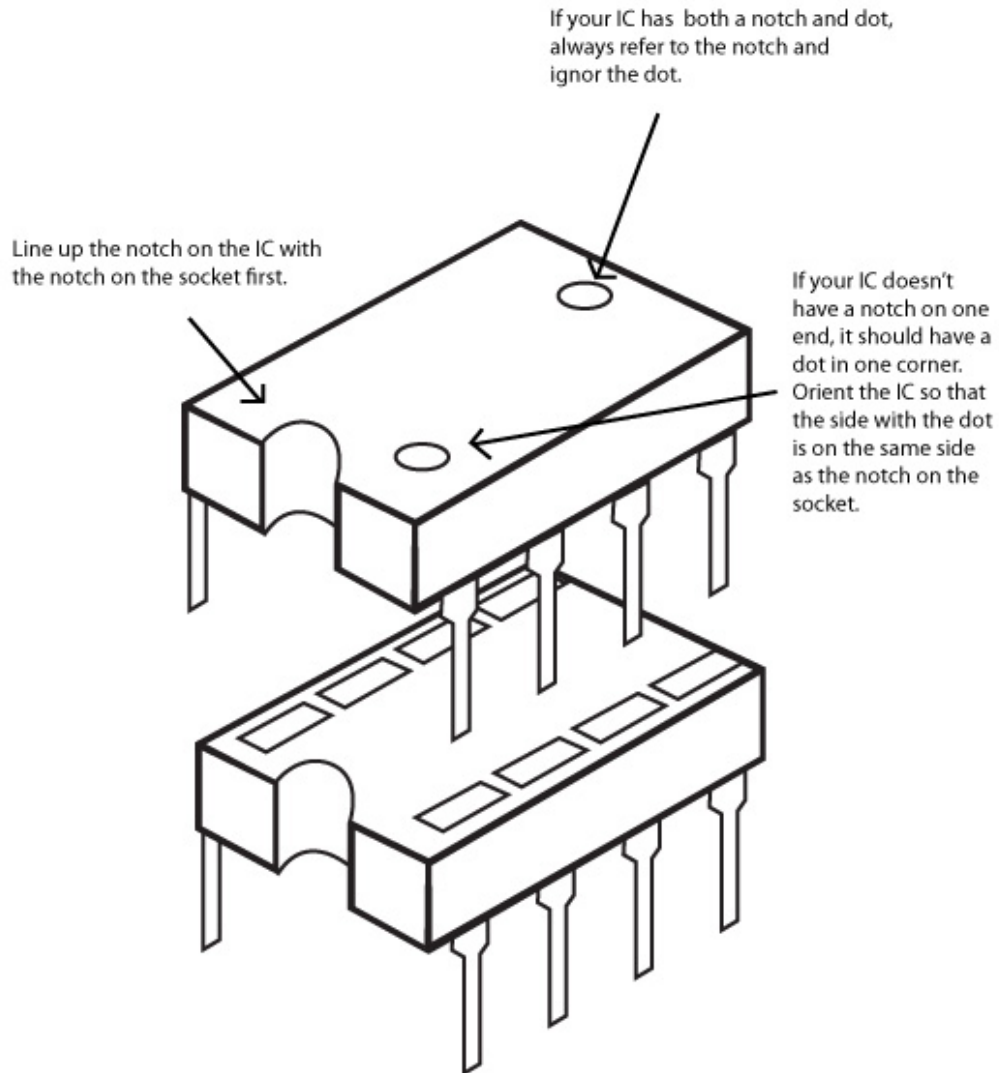


Step 2: Wire the jacks and footswitch as shown.



Installing IC/Finish up

Don't forget to add the knobs, put the cover on the enclosure, and apply the bumpers to the cover.



Operating Overview



TONE: Also known as 'FILTER'. This controls the tone of the effect.

PRES.: PRESENCE. A sort of 'fine-tune' for the tone control. Has a greater effect when the distortion is turned down.

LEVEL: Controls the overall output volume level of the effect.

DIST.: DISTORTION. Controls the amount of distortion of the effect.

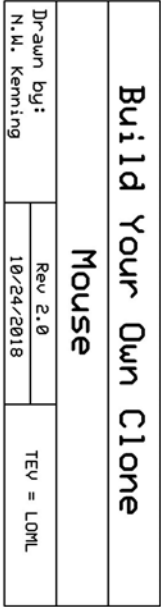
Si-LED-Ge: Toggles between Silicon diodes (vintage mode), LEDs (turbo mode), or Schotky diodes (fuzz mode) in the clipping section.

Power supply: 9V battery or 2.1mm negative tip.

Current Draw: 4.2mA

Input Impedance: 470k ohms

Output Impedance: 100k ohms



24

Please visit
<http://byoceletronics.com/board>
For any technical support

Copyright 2018
BYOC, Inc.