

# Build Your Own Clone Yellow Overdrive Kit Instructions



### Warranty:

BYOC, Inc. guarantees that your kit will be complete and that all parts and components will arrive as described, functioning and free of defect. Soldering, clipping, cutting, stripping, or using any of the components in any way voids this guarantee. BYOC, INC guarantees that the instructions for your kit will be free of any majors errors that would cause you to permanently damage any components in your kit, but does not guarantee that the instructions will be free of typos or minor errors. BYOC, INC does not warranty the completed pedal as a whole functioning unit, nor do we warranty any of the individual parts once they have been used. If you have a component that is used, but feel it was defective prior to you using it, we reserve the right to determine whether or not the component was faulty upon arrival. Please direct all warranty issues to: [sales@buildyourownclone.com](mailto:sales@buildyourownclone.com) This would include any missing parts issues.

**Return:**

BYOC, Inc. accepts returns and exchanges on all products for any reason, as long as they are unused. We do not accept partial kit returns. Returns and exchanges are for the full purchase price less the cost of shipping and/or any promotional pricing. Return shipping is the customer's responsibility. This responsibility not only includes the cost of

shipping, but accountability of deliver as well. Please contact [sales@buildyourownclone.com](mailto:sales@buildyourownclone.com) to receive a return authorization before mailing.

## **Tech Support:**

BYOC, Inc. makes no promises or guarantees that you will successfully complete your kit in a satisfactory manor. Nor does BYOC, Inc. promise or guarantee that you will receive any technical support. Purchasing a product from BYOC, Inc. does not entitle you to any amount of technical support. BYOC, Inc. does not promise or guarantee that any technical support you may receive will be able to resolve any or all issues you may be experiencing.

That being said, we will do our best to help you as much as we can. Our philosophy at BYOC is that we will help you only as much as you are willing to help yourself. We have a wonderful and friendly DIY discussion forum with an entire section devoted to the technical support and modifications of BYOC kits.

[www.buildyourownclone.com/board](http://www.buildyourownclone.com/board)

When posting a tech support thread on the BYOC forum, please post it in the correct lounge, and please title your thread appropriately. If everyone titles their threads “HELP!” then it makes it impossible for the people who are helping you to keep track of your progress. A very brief description of your specific problem will do. It will also make it easier to see if someone else is having or has had the same problem as you. The question you are about to ask may already be answered. Here is a list of things that you should include in the body of your tech support thread:

1. A detailed explanation of what the problem is. (more than, “It doesn’t work, help”)
2. Pic of the topside of your PCB.
3. Pic of the underside of your PCB.
4. Pic that clearly shows your footswitch/jack wiring and the wires going to the PCB
5. A pic that clearly shows your wiring going from the PCB to the pots and any other switches(only if your kit has non-PC mounted pots and switches)
6. Is bypass working?
7. Does the LED come on?
8. If you answered yes to 6 and 7, what does the pedal do when it is in the "on" position?
9. Battery or adapter (if battery, is it good? If adapter, what type?)

Also, please only post photos that are in focus.

## **Copyrights:**

All material in this document is copyrighted 2013 by BYOC, Inc.

# **Yellow Overdrive Kit Instruction Index**

**Parts Checklist.....page 7**

**Populating the Circuit Board.....page 9**

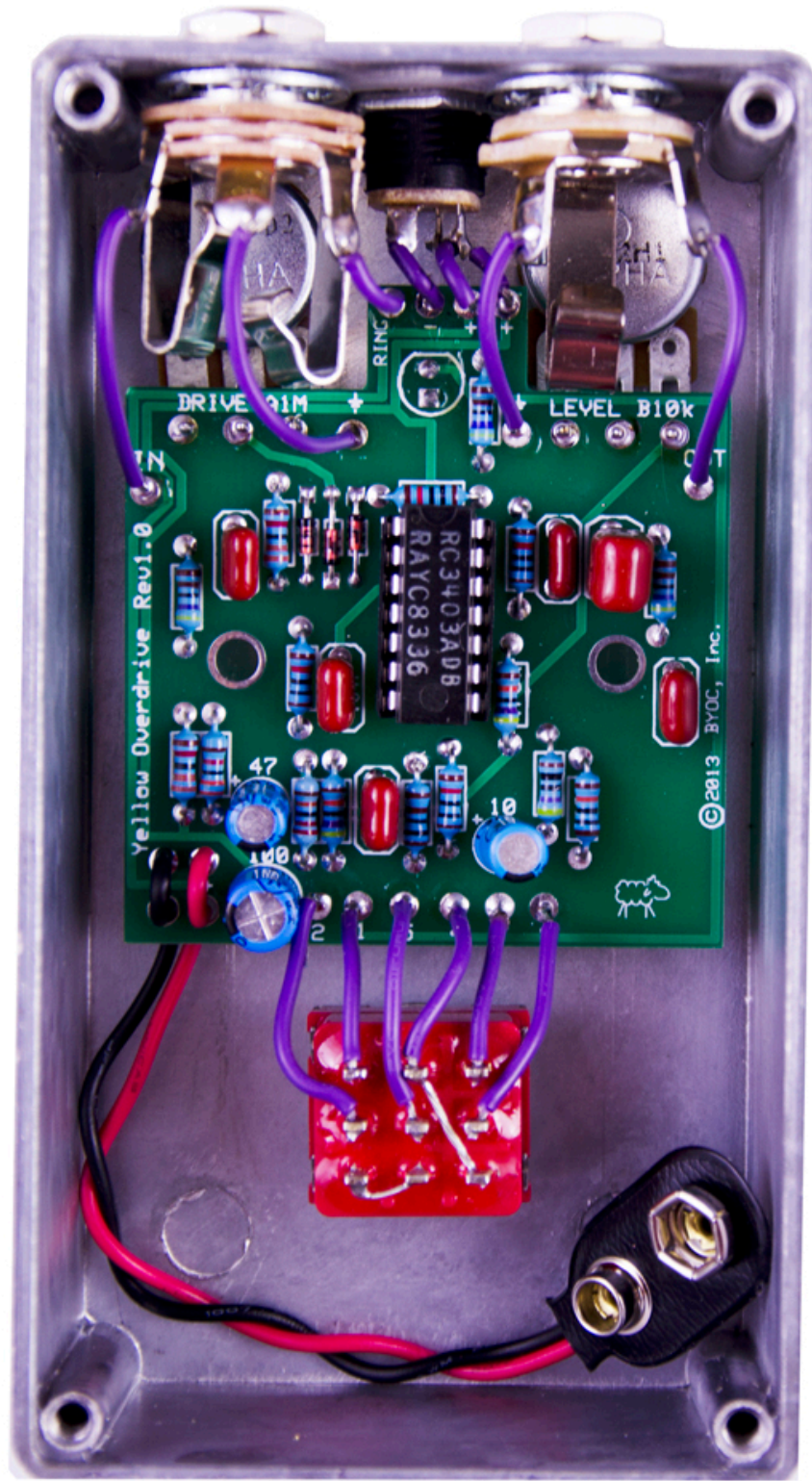
**Main PCB Assembly.....page 17**

**Wiring.....page 22**

**Installing the IC/Finishing up.....page 27**

**Operation Overview.....page 28**

**Schematic.....page 29**









## Parts Checklist for Yellow Overdrive Kit

### Resistors:

- 1 - 470 ohm (Yellow/Purple/Black/Black/Brown)
- 1 - 1k (Brown/Black/Black/Brown/Brown)
- 3 - 4k7 (yellow/purple/black/brown/brown)
- 4 - 10k (Brown/Black/Black/Red/Brown)
- 3 - 33k (Orange/Orange/Black/Red/Brown)
- 1 - 100k (Brown/Black/Black/Orange/Brown)
- 1 - 220k (Red/Red/Black/Orange/Brown)
- 2 - 470k (Yellow/Purple/Black/Orange/Brown)

### Capacitors:

- 1 - .018uF or 18nF film
- 2 - .047uF or 47nF film
- 2 - 0.1uF or 100nF film
- 1 - 1uf film
- 1 - 10uf Aluminum Electrolytic
- 1 - 47uf Aluminum Electrolytic
- 1 - 100uf Aluminum Electrolytic

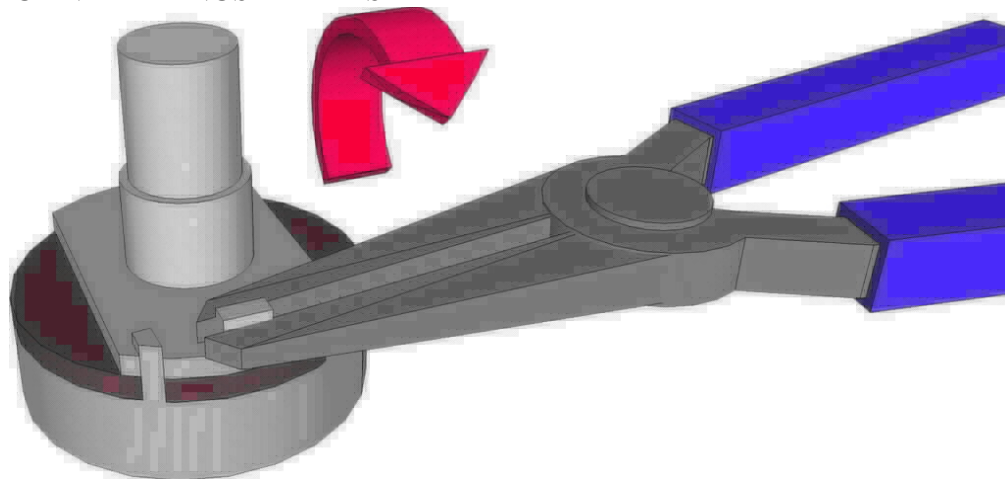
### Diodes:

- 3-1n4148 diodes

### IC's:

- 1-DIP 14 socket
- 1-3403 ic

**Potentiometers: SNAP THE SMALL TABS ON THE TOP OF THE POTS OFF WITH A PAIR OF NEEDLE NOSE PLIERS**



- 1 – B10k Linear Volume pot
- 1 – A1M Audio Drive pot

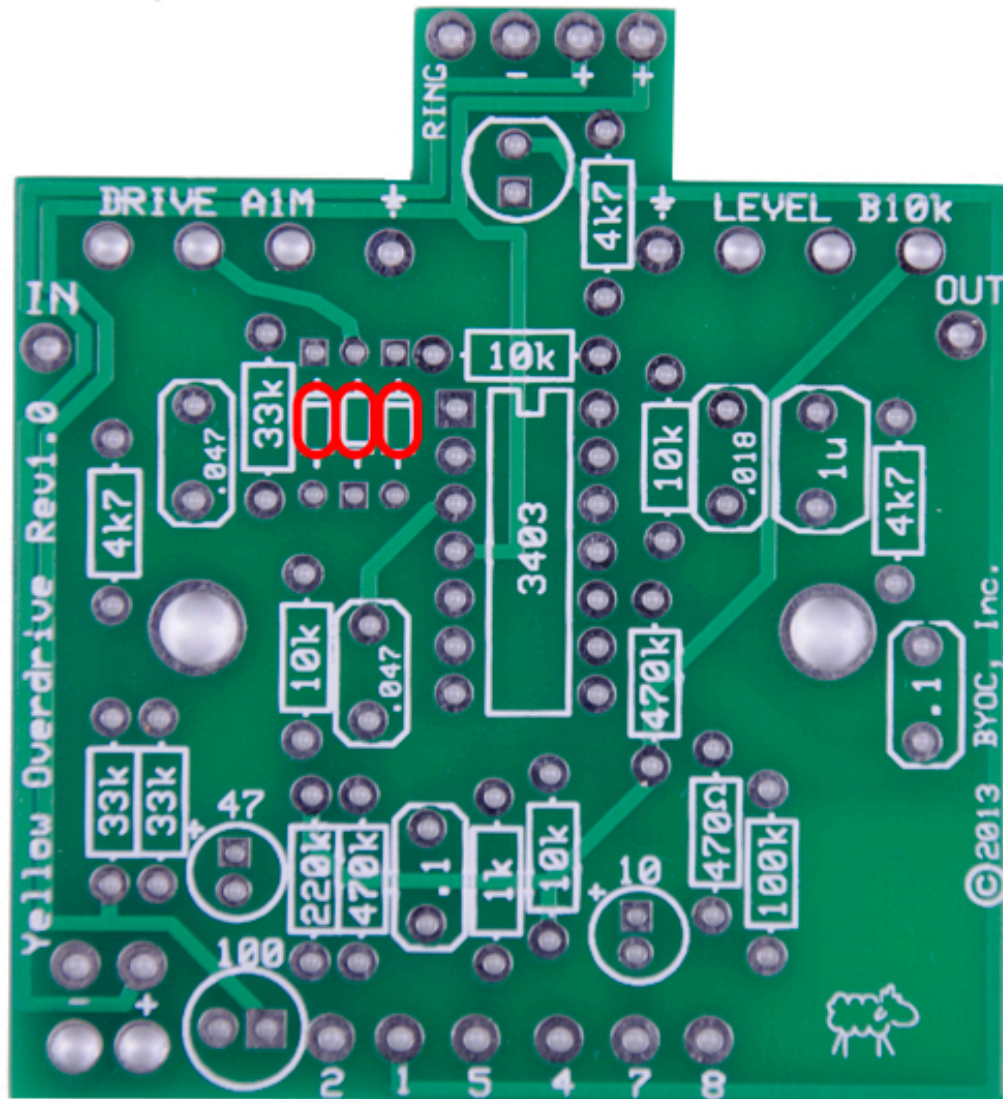
**Hardware:**

- 1 - predrilled enclosure w/ 4 screws
- 1 – Yellow Overdrive kit circuit board
- 1 - 3pdt footswitch
- 2 - knobs
- 1 - AC adaptor jack
- 1 -  $\frac{1}{4}$ " stereo jack
- 1 -  $\frac{1}{4}$ " mono jack
- 1 - battery snap
- 1 - red LED
- hook-up wire

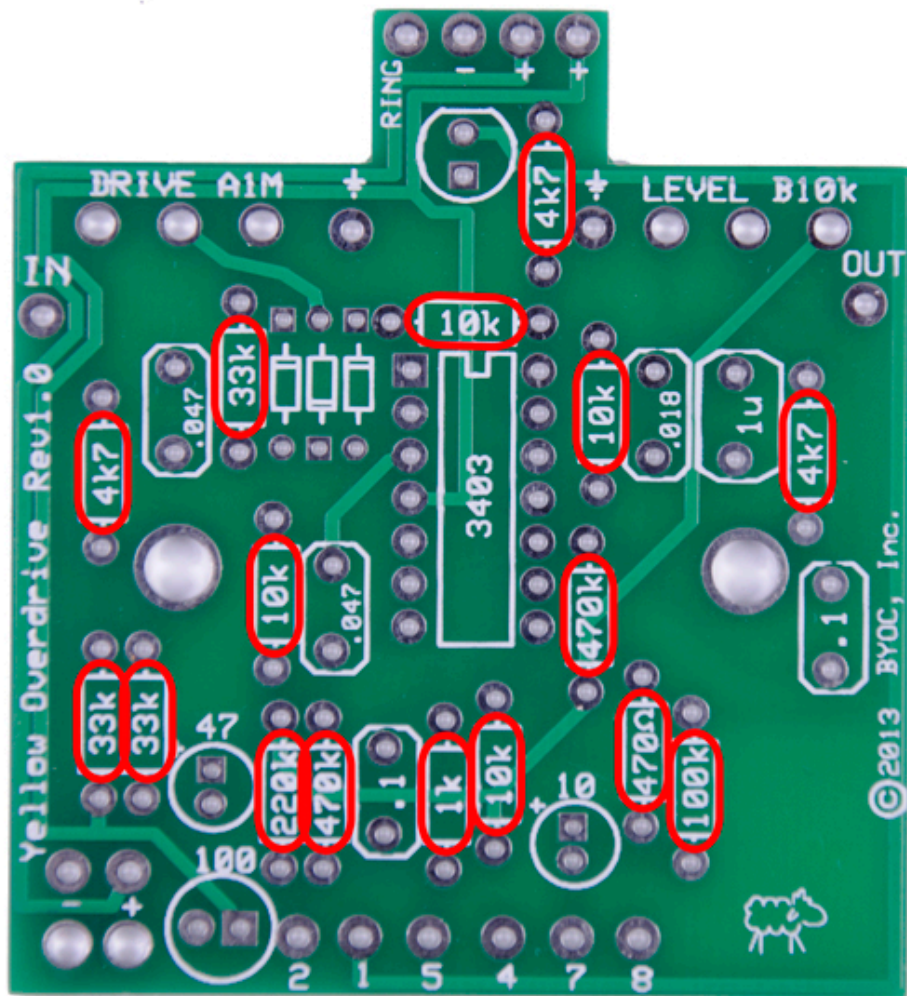


# Populating the Circuit Board

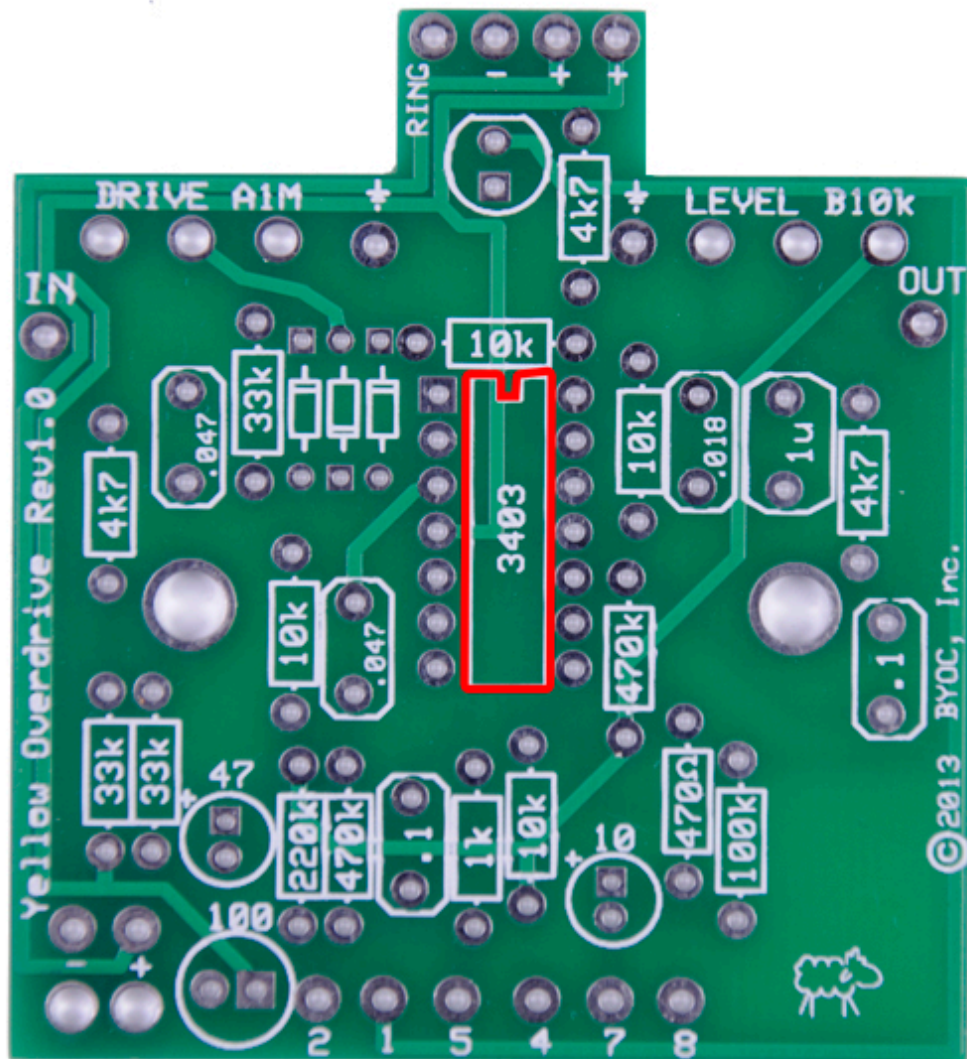
**Step 1:** Add the diodes. Be sure to match the end of the diode with the stripe to the layout on the PCB. The striped end should go in the square solder pad.



**Step 2:** Add all the resistors. Resistors are not polarized and can be inserted in either direction.

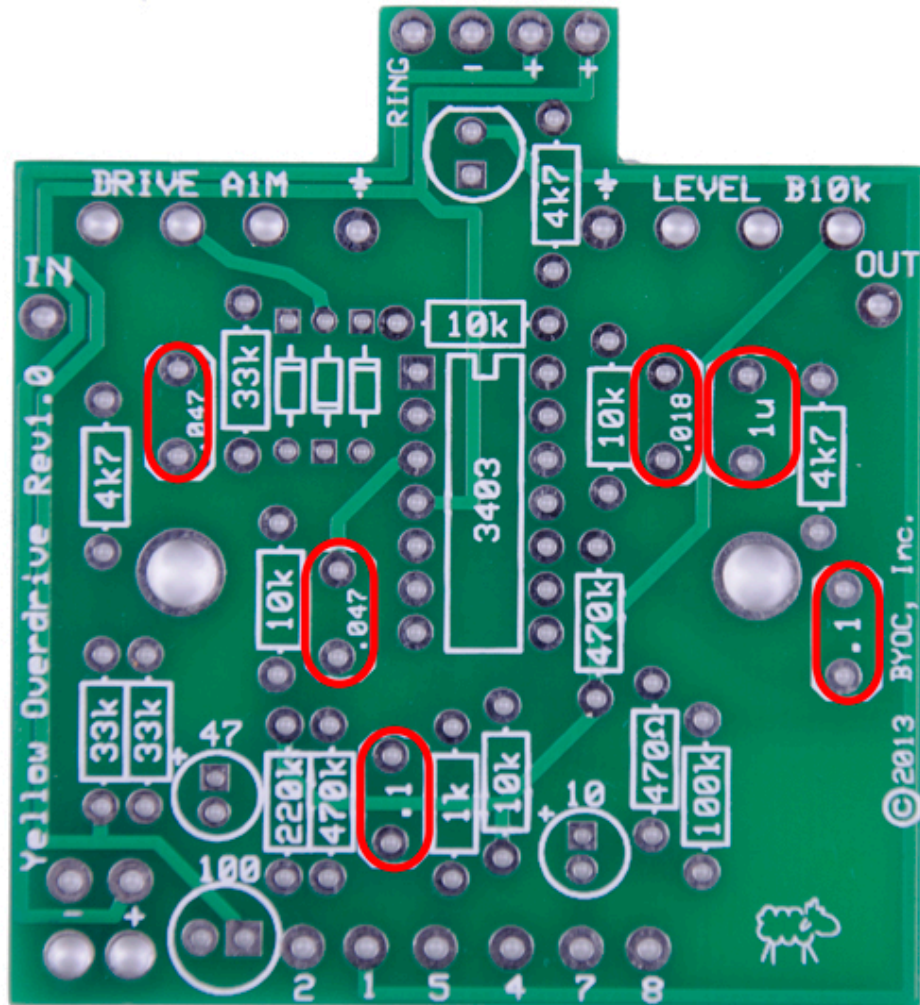


Step 3: Add the 14 pin IC socket. **ONLY SOLDER THE SOCKET! NOT THE ACTUAL IC!** This is a socket. The sockets get soldered to the PCB. The ICs get inserted into the sockets. The actual IC chip itself, never gets soldered. You will insert the IC into the socket after the entire pedal has been built.



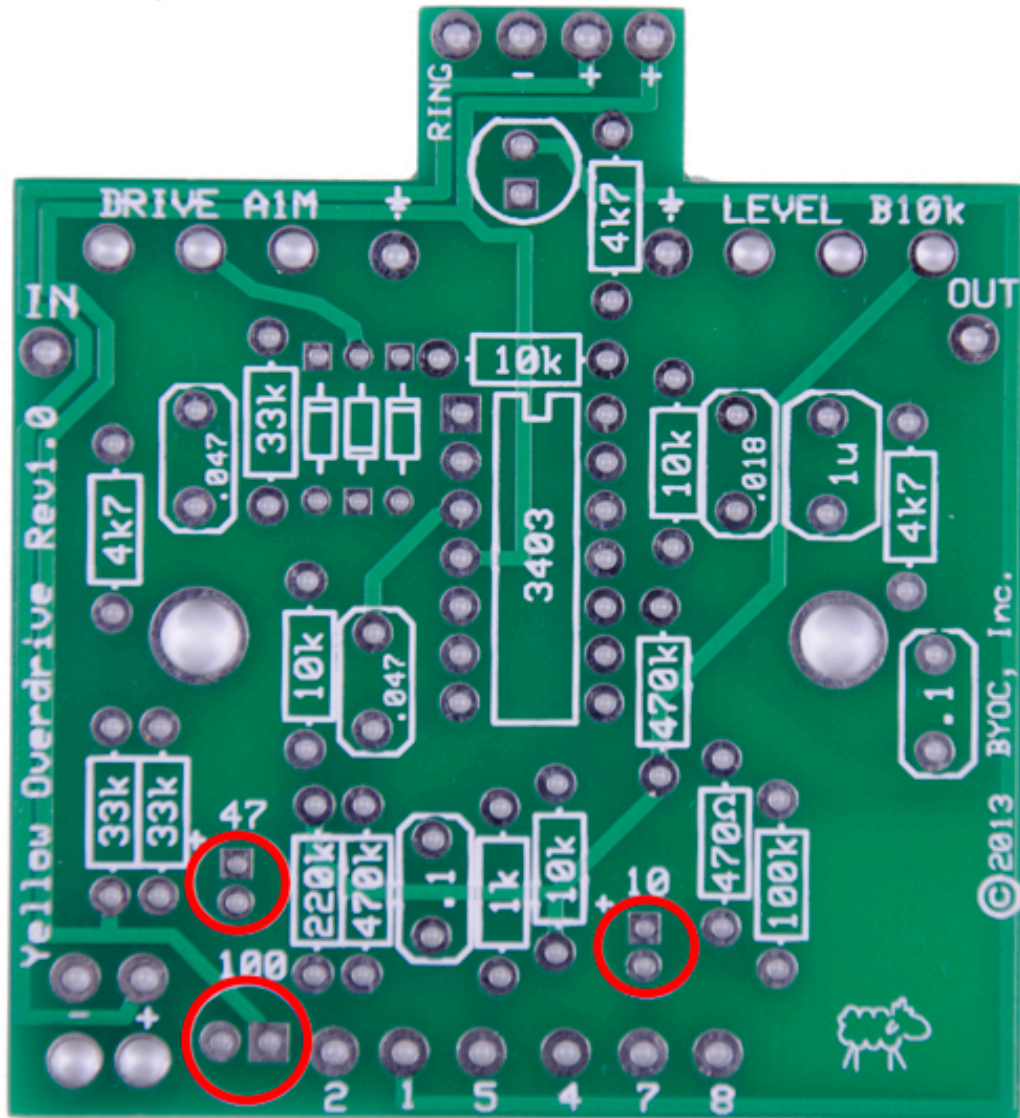


**Step 4:** Add the film capacitors. These are non-polarized so it can go in either direction.

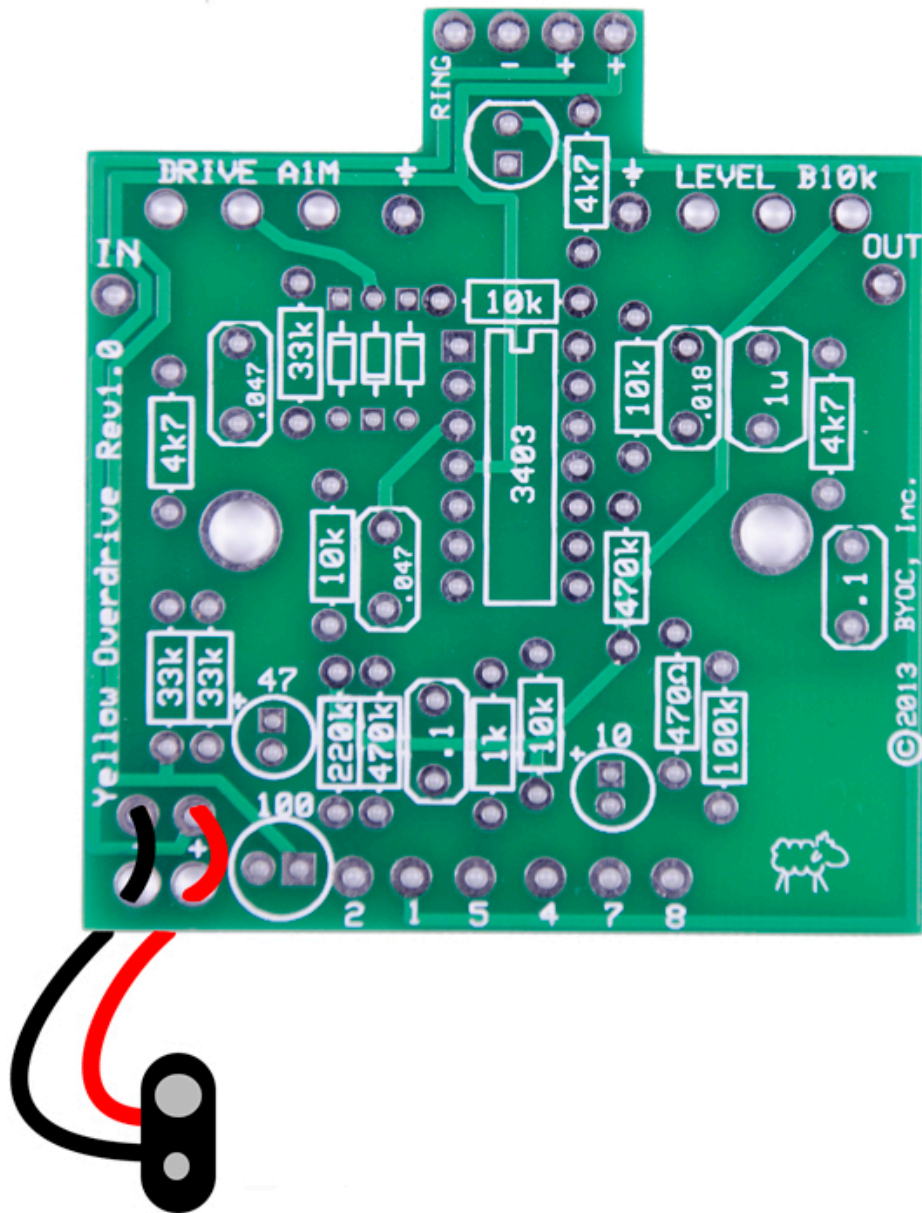




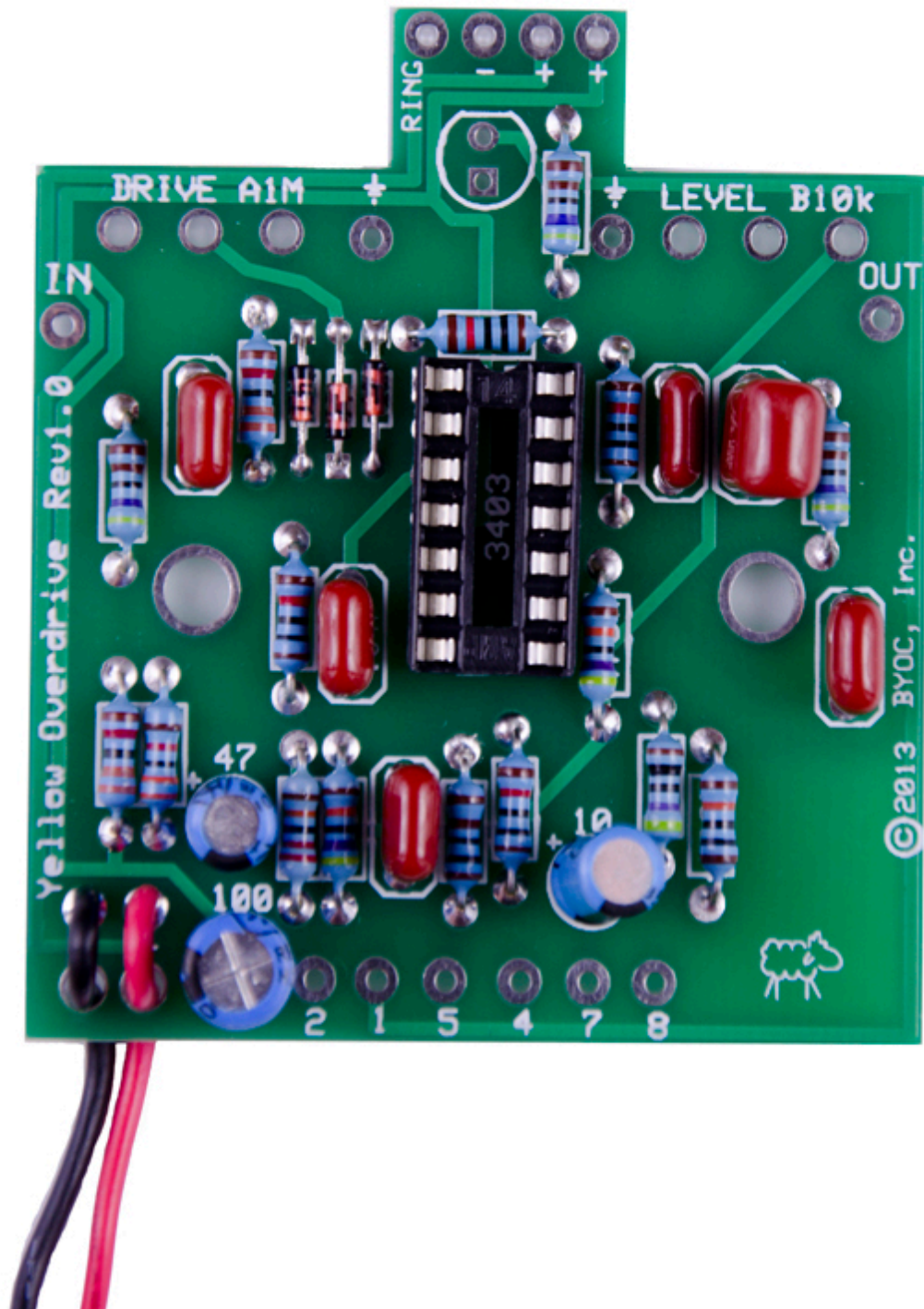
**Step 5:** Add the aluminum electrolytic capacitors. These are polarized, meaning there is a positive and negative end. The positive side will have a longer lead and goes in the square solder pad. The negative side will have a shorter lead, a stripe running along the body of the cap, and goes in the round solder pad.



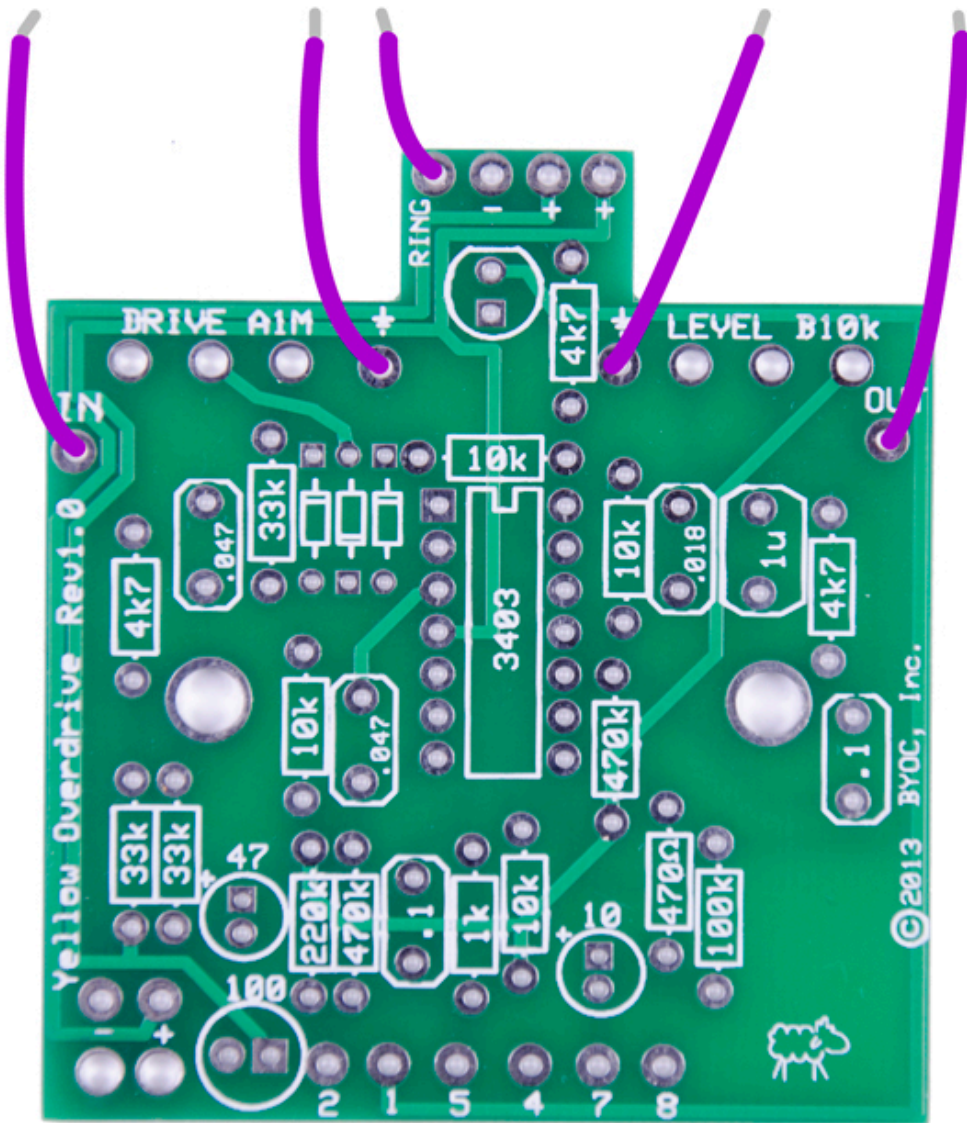
**Step 6:** Add the battery snap. Thread the solder ends of the battery snap into the strain relief holes from the bottom solder side of the PCB and out through the top. Insert the solder ends of the battery snap wires into the topside of their respective solder pads. Solder on the bottom side of the PCB. Remember the red wire goes in the “+” hole and the black wire goes in the “-” hole.



By this time, your PCB should look like this

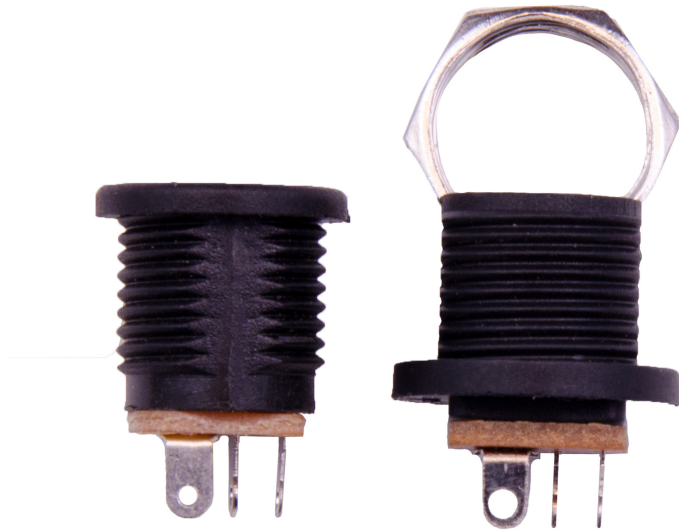




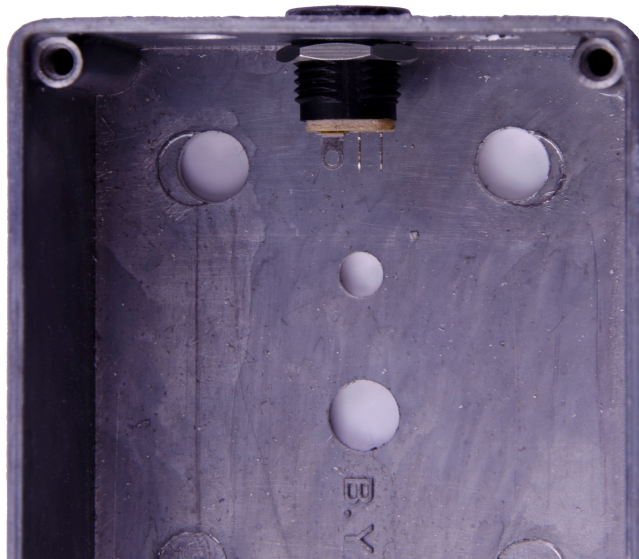




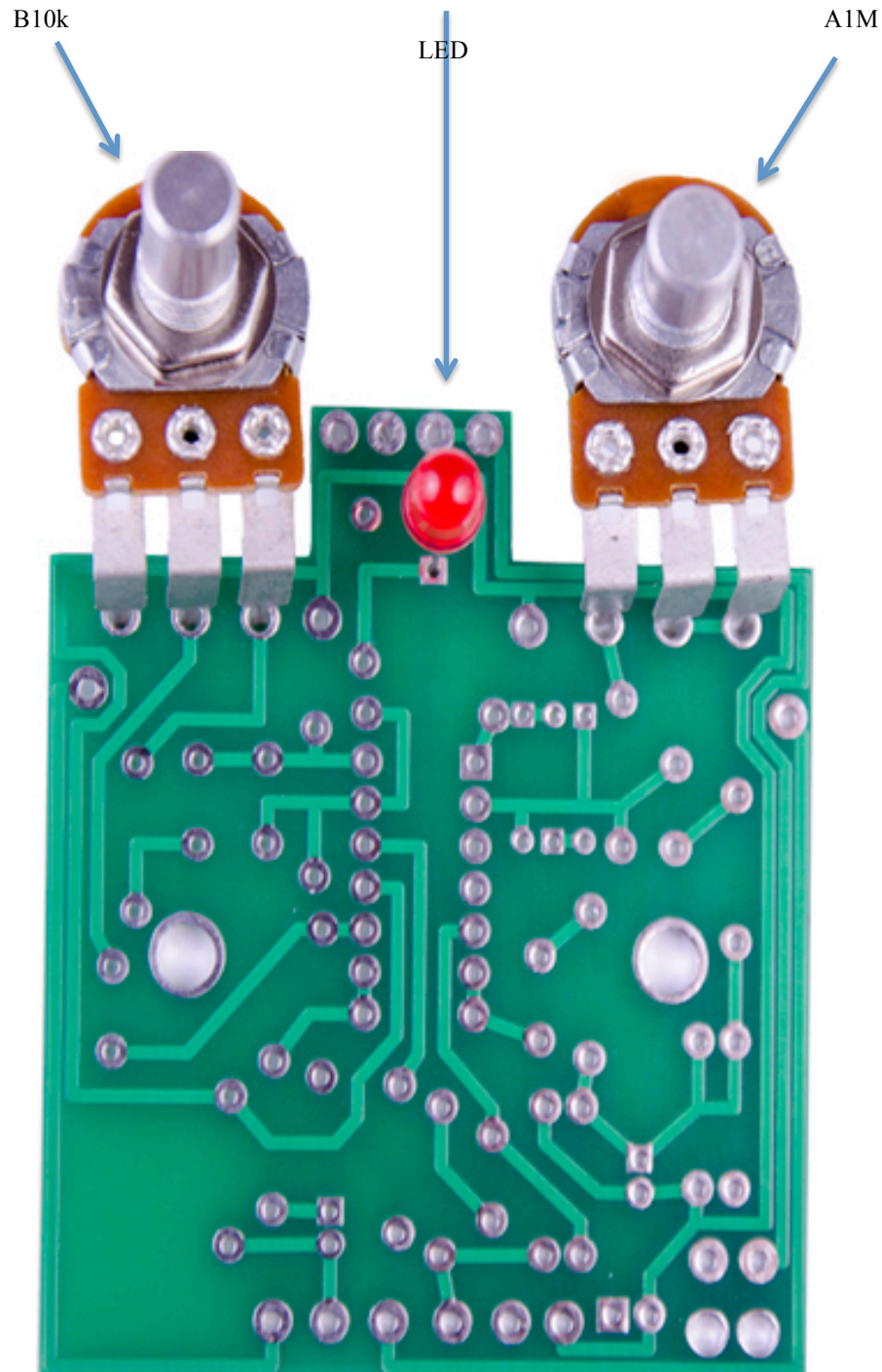
# Main PCB Assembly

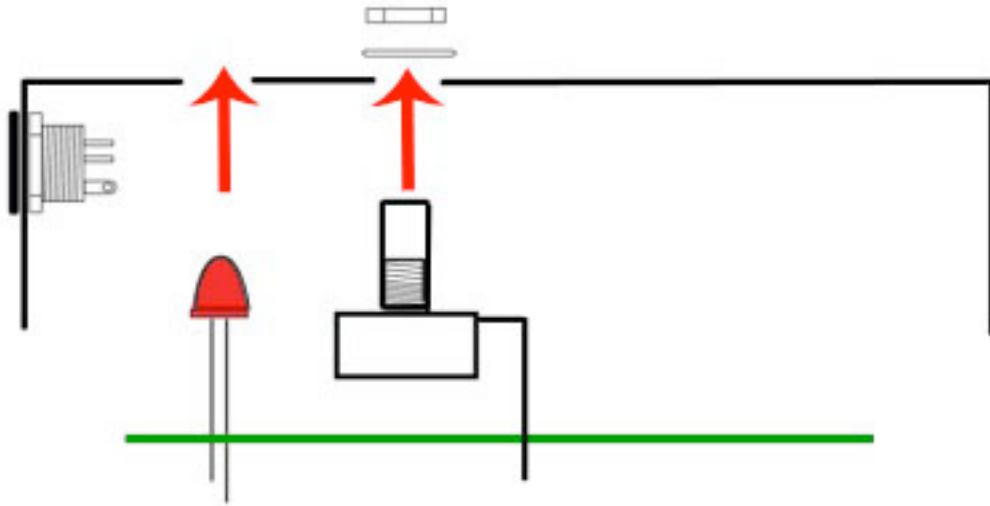


**Step 1:** Mount the AC adapter jack to the enclosure. Your kit may come with either an external thread or internal thread. Don't get confused by this. They still function exactly the same. You just thread the external nut on the outside and the internal nut on the inside. The picture below is of an internal nut jack.



**Step 2:** Flip the PCB over so that the bottom or solder side is up. Insert the B10k (Volume) & A1M(Gain) potentiometers, and the LED into the bottom side of the PCB. **DO NOT SOLDER ANYTHING YET!!!** The LED will have one lead that is longer than the other. **THIS WILL GO INTO THE SQUARE SOLDER HOLE.**

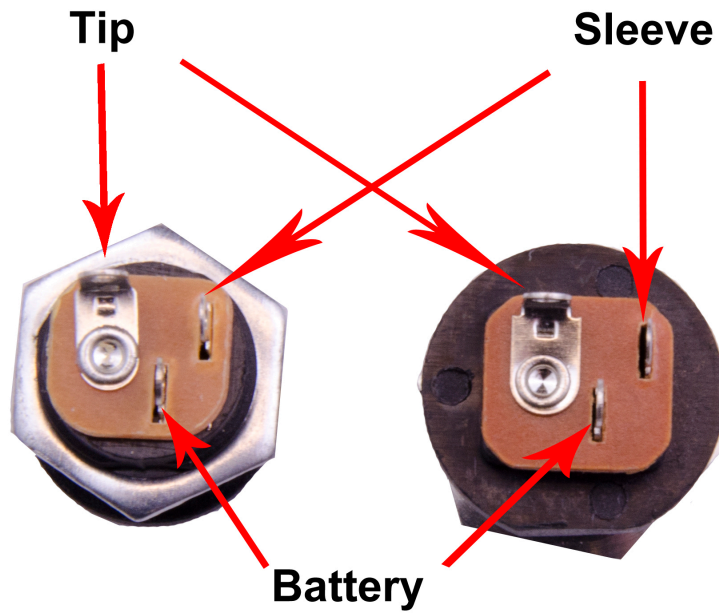




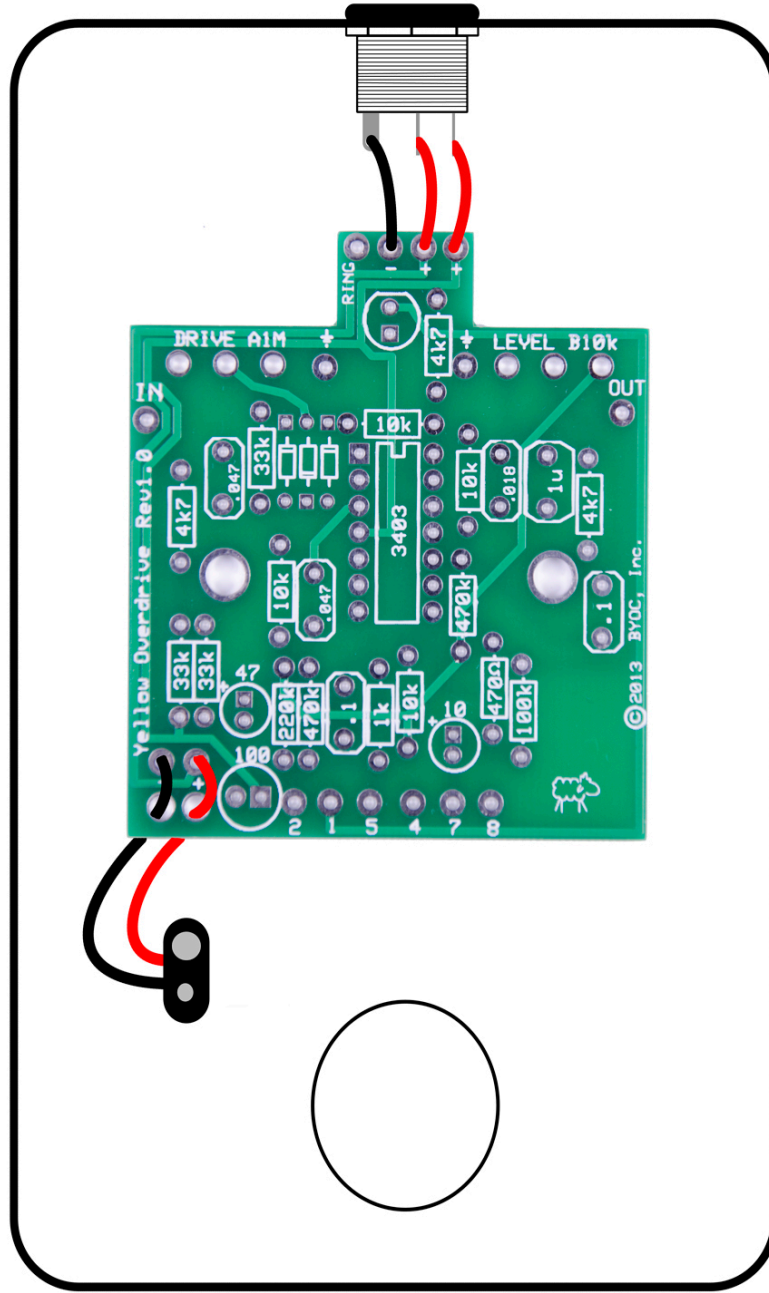
**Step 3:** Hold the PCB in one hand so that the component side of the PCB is in the palm of your hand and the bottom side with the pots, toggle switch and LED is facing up. Now use your other hand to guide the predrilled enclosure onto the PCB assembly so that the pots and LED all go into their respective holes. Once the PCB assembly is in place, secure it by screwing on the washers and nuts for the pots. Only tighten them with your fingers. **You do not want them very tight yet.**

**Step 4:** Turn the entire pedal over so that the component side of the PCB is facing up. Lift the PCB up off the pots about 2mm just to make sure that the back of the PCB does not short out against the pots. Make sure the PCB is level and symmetrically seated inside the enclosure.

**Step 5:** Solder the pots and LED. You will solder these parts on the component side of the PCB. After you have soldered them in place, be sure to tighten up their nuts.



**Step 6:** Connect the TIP (negative) terminal of the DC adaptor jack to the eyelet on the PCB labeled “-“. Connect the SLEEVE of the DC adaptor jack to the eyelet on the PCB labeled “+” farthest to the right. Connect the battery disconnect terminal of the DC adaptor jack to the second eyelet on the PCB labeled “+” located in the middle of the other two eyelets . See diagram on the next page.





# Wiring

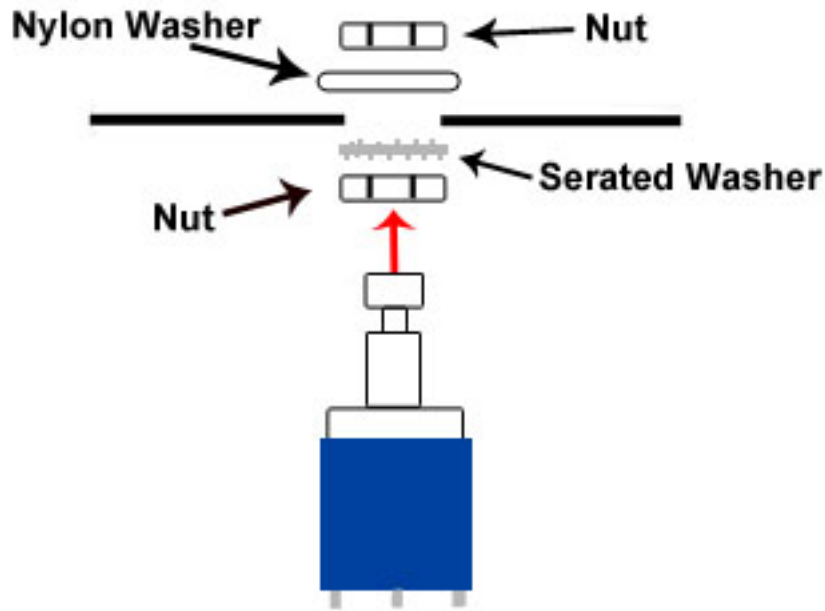
## Stereo (input) Jack



## Mono (output) Jack



**Step 1:** Install the 1/4" jacks to the enclosure.

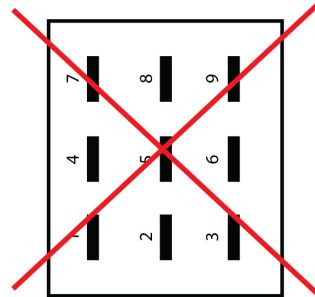
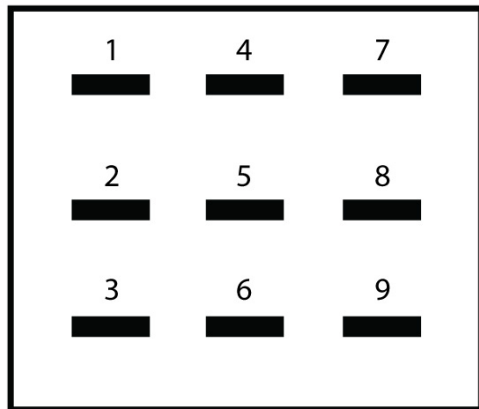


**Step 2:** Install the footswitch. Orient the footswitch so that the flat sides of the solder lugs are like the diagram below.

**NOTE:** There are no actual number markings on the footswitch. There are two correct ways you can orient the footswitch. They are both 180 degrees of each other. Either way is fine. It does not matter as long as the flat sides of the solder lugs are running horizontal, not vertical.

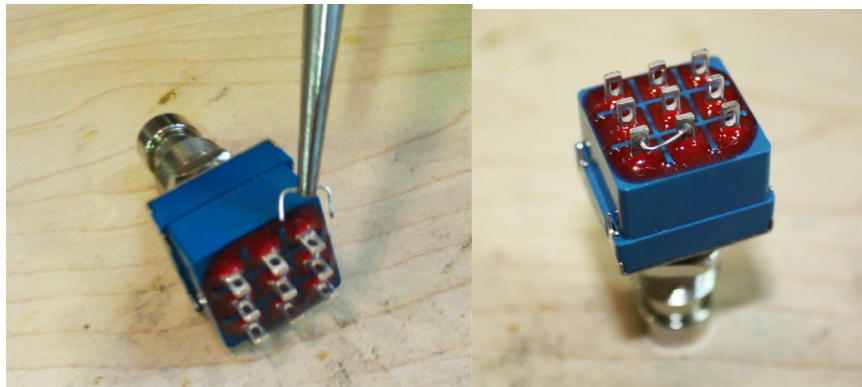
**NOTE:** It may be easier to wire up the foot switch before installing it into the pedal. There will be more room to work & it will be much easier to thread the lug 4 to lug 9 jumper.

## FOOT SWITCH SOLDER LUG DESIGNATIONS

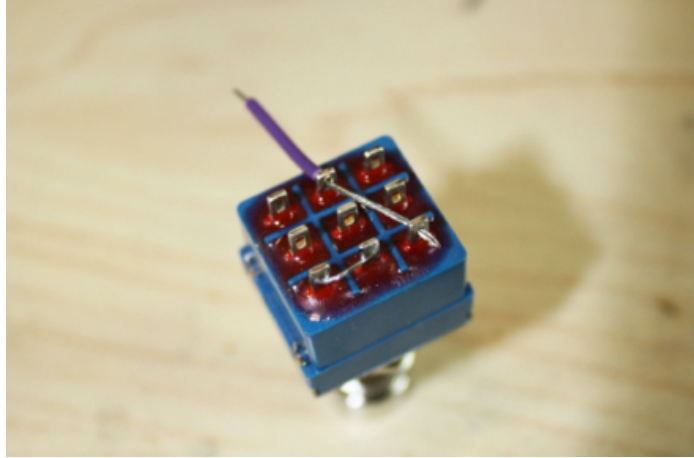


### Step 3: Wiring the foot switch.

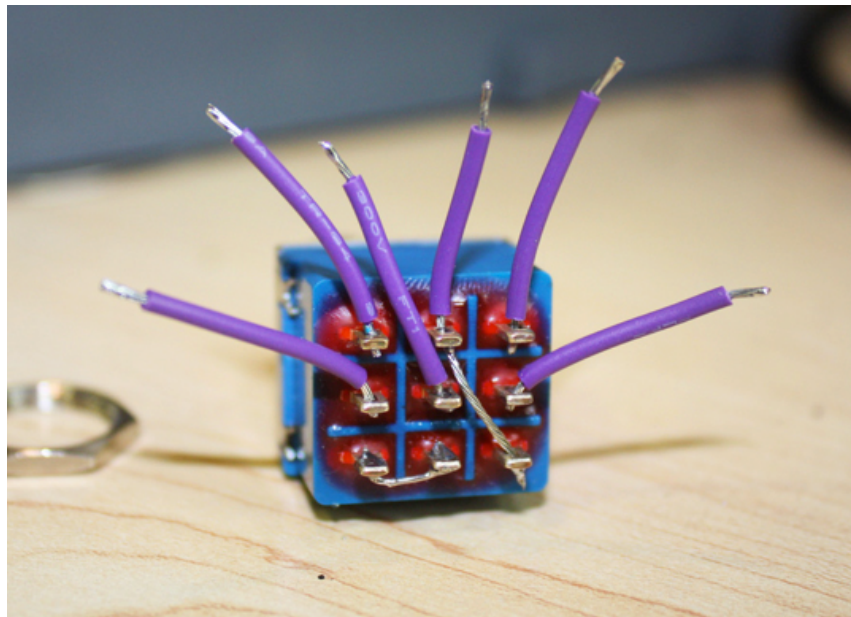
- Make a jumper between lugs 3 & 6 from clippings from the resistors. Simply use your needle nose pliers to make a U shape & insert into lugs 3 & 6, then solder.



- Cut a 1.5" piece of wire. Strip 1/8" of one end. Strip 1/2" off the other end. Tin both ends. This will be used to connect lug/eyelet 4. The longer stripped end will be used to jumper lug 4 to 9.



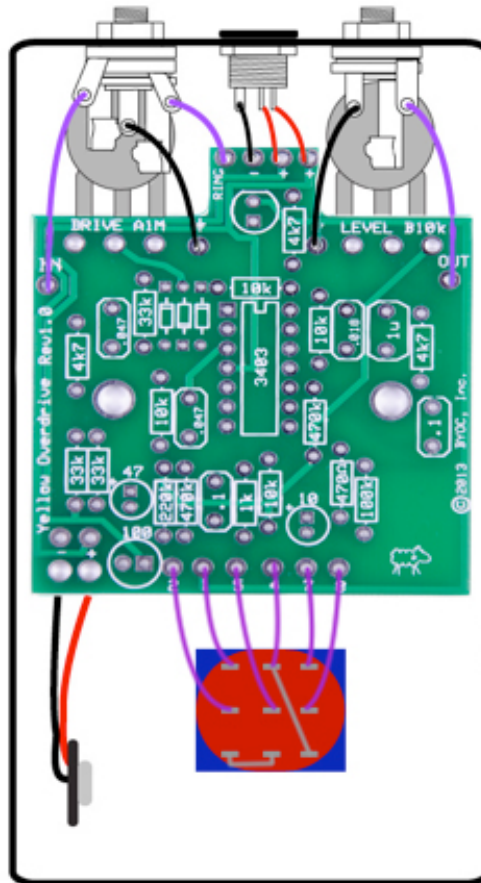
- Cut two 1" pieces of wire. Strip 1/8" off each end and tin. These will be used to connect lugs/eyelets 1 & 7
- Cut three 1.25" pieces of wire. Strip 1/8" off each end and tin. This will be used to connect lugs/eyelets 2, 5, & 8



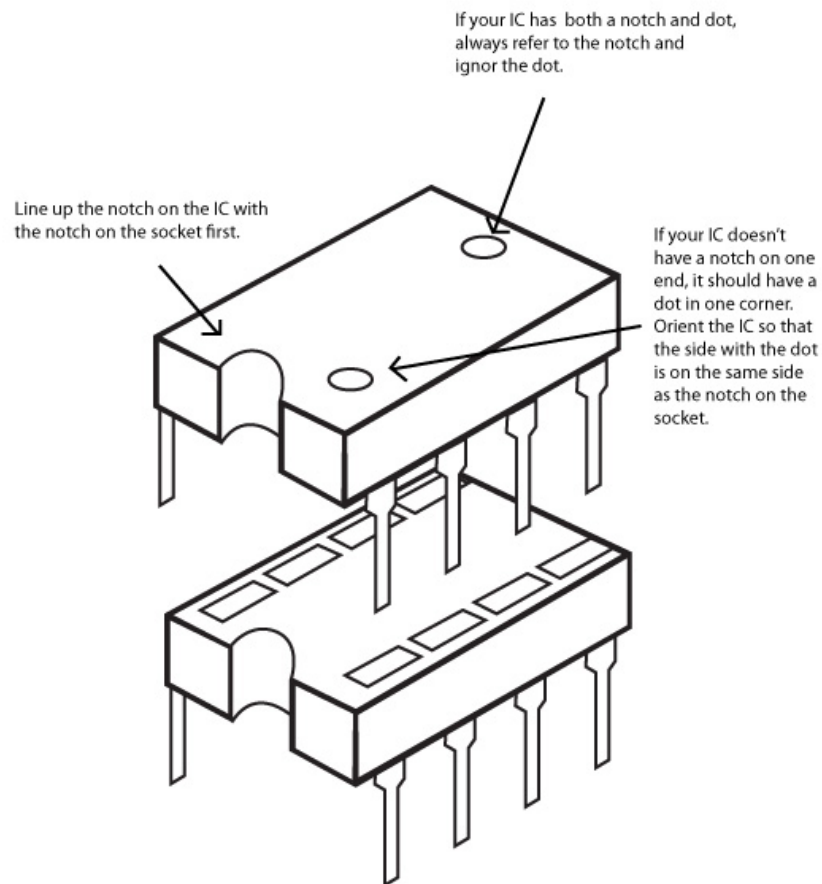
**Step 4:** Install the foot switch into the enclosure if it isn't already. Insert the foot switch wires into their respective eyelets on the PCB. You can insert them into the top side and solder on the top side as well. The solder pads should be large enough (if you are using a soldering iron that isn't too big) to allow you to do this without burning the PVC coating on the wires if you are careful. If you do singe the plastic on the wires, it's OK. It's not going to hurt anything. It's purely aesthetic.



NOTE: Wires shown in black & red are merely to indicate ground wires & positive power wires, respectfully. Your kit provides purple wire; you may choose to detonate these in a wire color of your choice



## Installing IC/Finish up



Don't forget to put the cover on the enclosure and apply the bumpers to the cover.

# Operating Overview



Overdrive: Controls the gain

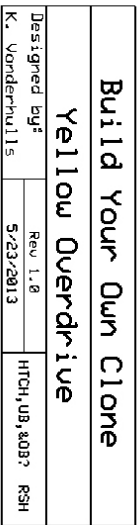
Volume: Controls the volume

Power supply: Normal standard 2.1mm negative tip 9VDC power supply

Current Draw: 3.5mA

Input Impedance: 470k ohms

Output Impedance: 100k ohms





Please visit  
<http://byoceletronics.com/board>  
for any technical support

copyright 2013  
BYOC, Inc.